



2024-2025

SM

**CENTRAL DAUPHIN
HIGH SCHOOL**

**ACADEMIC
PLANNER**

&

**CAREER
PATHWAYS**



CENTRAL DAUPHIN SCHOOL DISTRICT

SCHOOL BOARD MEMBERS

Mr. Michael Betz

Mrs. Janelle Bingaman

Mr. David Doernemann

Mr. Eric Epstein

Mr. Jeff Gordon

Mr. Michael Jacobs

Mr. William Roberts

Mrs. Lauren Silvers

Mrs. Jeanne Webster

DISTRICT ADMINISTRATORS

Dr. Norman Miller, Superintendent

Dr. Erika Willis, Assistant Superintendent

Mrs. Kelly Fowlkes, Director of Curriculum,
Instruction, and Assessment

TABLE OF CONTENTS

Introduction and Assurances	1
Definitions	1
Graduation Requirements	2
Keystone Exam	2
Credit Deficiency	2
College in the High School	3
Dual Enrollment	3
Summer School Information	3
Credit Requirements	3
Curriculum Recommendations / Flow Charts	4-9
The Dauphin County Technical School	10
Using the Catalog	11
Scheduling	11
English	12
Social Studies	17
Science	21
Mathematics	25
World Languages	29
Technology Education	32
Business Education	35
Art Education	38
Music Education	40
Family and Consumer Science	46
Health and Physical Education and Safety	48
Cooperative Related Work Experience	50
English as a Second Language	50
Gifted Education	50
Individualized Education Programs and Service	51
NCAA Eligibility Requirements	67
NCAA Eligibility Quick Reference	69
Career Pathways	

INTRODUCTION

The program of studies in the high schools of the Central Dauphin School District offers a wide variety of courses. This catalog will help to develop a workable plan, but the job of preparing an educational program requires decision-making and careful planning. PLEASE read the catalog carefully. Discussion between students and guardians is recommended. Keep in mind past education, career goals and abilities. If there are questions about how to proceed, school counselors are available to assist. Additionally, the Career Pathways information available at the end of this planner may provide valuable information when choosing courses.

The 2024-25 Academic Planning Guide lists courses that are approved by Central Dauphin School District. Enrollment, available instructors, and scheduling may make it impossible to offer certain courses.

Graduation requirements are earned in grades nine through twelve. Students should be able to develop a good educational plan and, most importantly, know where they stand for graduation at all times. To help maintain a record of courses and requirements, an Educational Planning form is available on the school's website. A list of recommended courses for students planning for college and recommended courses for students planning to start a career following graduation has been provided.

ASSURANCES

The Central Dauphin School District offers a non-discriminatory program. All courses are open to students regardless of race, national origin, sex, or disabilities.

CAREER PATHWAYS

Career Pathways are designed to help students focus their course selection toward preparing for a specific goal. Each pathway is a broad grouping of careers with similar characteristics and whose employment requirements call for many common interests, strengths, and competencies.

DEFINITIONS

ADVANCED PLACEMENT – The Advanced Placement Program (AP) is a cooperative educational endeavor between secondary schools and colleges and universities. It gives high school students exposure to college-level material through involvement in the AP course, and then gives them an opportunity to show what they learned by taking an AP exam. Colleges and universities may then be able to grant credit, placement, or both to these students.

COURSE WEIGHT – Courses will carry a weight of at least 1.0. Certain college preparatory and advanced placement courses which require more specialization and are generally more difficult will have a greater weight, either 1.04 or 1.08. When class rank and grade point average are calculated, these weights will have an effect. A general description of how courses are weighted is:

- 1.08 – Advanced placement (courses taught on the college freshman level), CHS – Pitt and CHS – HU courses
- 1.04 – Selected advanced sequential courses
- 1.0 – Courses not selected above

CREDIT – Demonstration of proficiency against the academic standards in a course. Credit is awarded based upon the number of hours the course meets.

CURRICULUM – This is a planned program of study that contains the courses a student has selected to reach identified academic and/or career goals.

CYCLE – One complete rotation through the student schedule will take six school days. This school year will have a total of 30 cycles.

ELECTIVES – An elective is a course that is chosen by the student and not listed as a graduation requirement. Note that both the State and District requirements call for a minimum number of elective credits. (See graduation requirements on page 5.)

GRADUATION REQUIREMENTS – These are the courses and credits necessary to graduate from high school. There are State and District requirements. Since District requirements exceed the State requirements, follow the District information provided in this planner.

INDEPENDENT STUDY – Under special conditions, independent study may be possible. Students may not receive credit through independent study for a course that is listed as a graduation requirement.

SEQUENTIAL COURSES – These are courses that are related; examples are Latin I and II.

INDIVIDUALIZED EDUCATION PROGRAMS AND SERVICE – The Individual Education Plan, also known as the IEP, is a document that is developed for a child who needs special education services. The plan is created through a team effort including the guardian and is reviewed on a regular basis. The IEP defines individualized goals and specially designed instruction for a student who has been determined to have a disability as defined by federal regulations.

SUMMER SCHOOL – In order for students to attend summer education remedial courses for credit, an average of 40% must have been achieved during the school year. Permanent incompletes are not eligible for summer school remediation. All summer school applicants are subject to principal approval.

CENTRAL DAUPHIN SCHOOL DISTRICT GRADUATION REQUIREMENTS

Students graduating in 2024 must obtain credit in the following subjects in grades 9 through 12:

English	4.0
Mathematics	4.0
Science	3.0
Social Studies	3.0
Health	0.5
Physical Education	2.0
Arts/Humanities	1.0
Electives	<u>6.0</u>
TOTAL	23.5

KEYSTONE EXAM

The Keystone Exams are a component of Pennsylvania's system of high school graduation and federal accountability requirements. Beginning with the class of 2023 students will have a variety of pathways to complete the requirements for graduation.

CREDIT DEFICIENCY

Students who have not earned the required credits for graduation after completing eight semesters of attendance in high school may return to high school to complete the requirements. Students must see the counselor and principal to plan for the next school year.

COLLEGE IN THE HIGH SCHOOL

College in the High School (CHS) is an academically rigorous program option for motivated students seeking an intellectual challenge within a supportive high school environment. The courses will be taught by Central Dauphin School District teachers who have been approved and trained by either the University of Pittsburgh (CHS-Pitt) or Harrisburg University (CHS-HU) and will offer students the opportunity to earn both high school and University of Pittsburgh or Harrisburg University credit in courses taught right in their classroom. The fee for the course is set by the university. Please contact the Counseling Office for further information.

DUAL ENROLLMENT

Senior students granted admission to a dual enrollment program at Harrisburg Area Community College or Harrisburg University can substitute college level courses/credits for high school credit and graduate with their class. There will be no remedial level courses permitted. It is strongly recommended that students interested in dual enrollment have a GPA of 87% and a minimum of 1100 on the SAT. For more information, please see your school counselor.

SUMMER SCHOOL

Students not successfully completing their grade level English course during the regular school year must repeat and successfully complete that English course during summer school that calendar year. Students who fail to earn an English credit during the regular school year or during summer school must repeat the failed English course during the next academic school year. English courses are sequential and must be taken and successfully completed in sequential order.

Summer school courses for students in grades nine and ten may be available through the Capital Area Online Learning Association (CAOLA).

Summer school courses for students in grades 11 and 12 may be available through the Keystone Credit Recovery Program or through CAOLA. Students in grades 11 and 12 may take a maximum of two classes in their high school career through the Keystone Credit Recovery Program or any similar program.

Students may take a maximum of two classes per year during summer school.

All summer school grades must be received in the high school office by August 20th. Summer school grades are pass/fail. *Please note, summer school courses are not NCAA approved.*

CREDIT REQUIREMENTS

The following information details the credits required for a student to move to the next grade level in high school.

	Minimum Credits Required
Credits needed to become a Sophomore	4.5
Credits needed to become a Junior	9
Credits needed to become a Senior	13.5*
Credits needed to graduate	23.5

*A student will not graduate with his/her class in June if entering their Senior year with only 13.5 credits.

CURRICULUM RECOMMENDATIONS

Recommended College Preparatory Program of Studies by Grade for Fall of 2024.

The courses listed are recommended for students planning to take the SAT or ACT.

<u>Grade</u>	<u>Course Name</u>	<u>Minimum Credit Required</u>
9	**Freshman English – CP or Honors **U.S. History II or AP History of the United States Environmental Science or Honors Biology Algebra IA, CP Algebra I, Geometry – CP or Honors, or Algebra II – CP or Honors World Language Elective *Physical Education ***Introduction to Web Design	6.5
10	**Sophomore English – CP or Honors **American Government and Citizenship or AP United States Government and Politics Biology or Honors Biology, Chemistry, or Honors Chemistry Algebra IB, Geometry – CP or Honors, Algebra II – CP or Honors, Advanced Math Topics, or Pre-Calculus – CP or Honors World Language *Physical Education *Health Elective	7.0
11	**Junior English – CP or Honors, or Multicultural Literature **World Cultures, AP World History, or AP Human Geography Chemistry – CP or Honors, or Physics Geometry – CP or Honors, Algebra II – CP or Honors, Advanced Math Topics, Pre-Calculus – CP or Honors, Calculus I or AP Calculus AB World Language *Physical Education ***Financial Literacy Elective	7.0
12	**Senior English – CP or AP, Multicultural Literature, or Twentieth Century Literature Social Studies Elective Science Elective Algebra II – CP or Honors, Advanced Math Topics, Pre-Calculus – CP or Honors, Calculus I or AP Calculus AB, AP Calculus BC, Probability & Statistics, Linear Algebra, AP Computer Science A, AP Statistics, Economics or AP Economics World Language *Physical Education Elective	6.5

*Required for graduation.

**Highly recommended for graduation.

***Recommended for graduation.

Please see page 3 for additional graduation requirements.

Students may not satisfy more than one required English credit by taking more than one English course during their junior year. Any additional English course would count as an elective credit.

CURRICULUM RECOMMENDATIONS

Recommended Academic Preparatory Program of Studies by Grade for Fall of 2024.

<u>Grade</u>	<u>Course Name</u>	<u>Minimum Credit Required</u>
9	**Freshman English **U.S. History II Environmental Science Algebra IA, CP Algebra I, or CP Geometry High School Literacy I Course selection will be determined by reading level. Elective *Physical Education ***Introduction to Web Design	6.5
10	**Sophomore English **American Government and Citizenship Biology I Algebra IB, CP Geometry or CP Algebra II *Physical Education *Health Electives	7.0
11	**Junior English or Multicultural Literature **World Cultures Astronomy, Geology, Meteorology, STEM I, STEM II CP Geometry, CP Algebra II, or Advanced Math Topics *Physical Education ***Financial Literacy Electives (up to two)	7.0
12	**Senior English, Multicultural Literature, or Twentieth Century Literature Social Studies Elective Science Elective CP Algebra II, Advanced Math Topics, Pre-Calculus, Consumer Math, Accounting I or II, Economics, or Personal Finance and Investing *Physical Education Electives (up to two)	6.5

*Required for graduation.

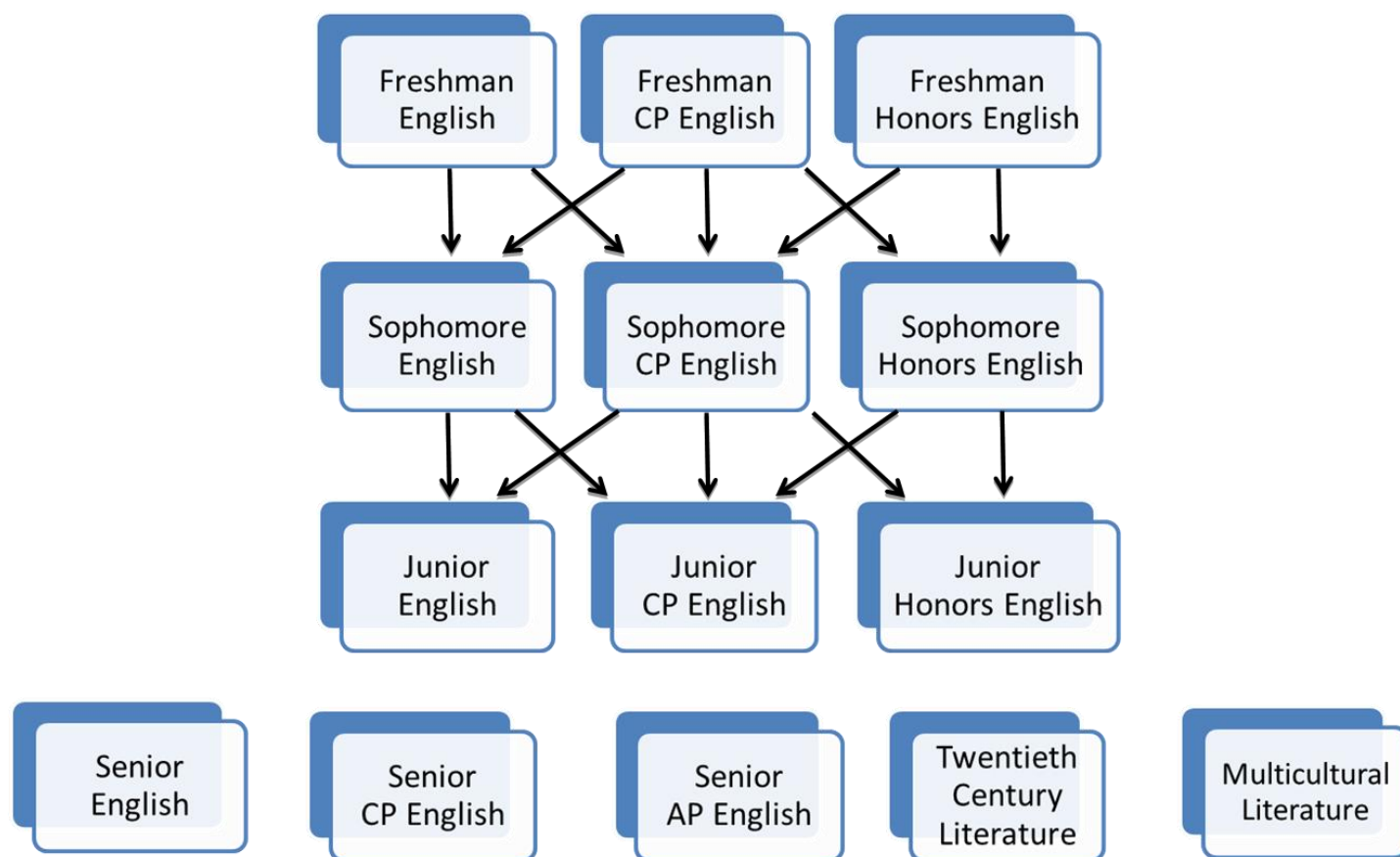
**Highly recommended for graduation.

***Recommended for graduation.

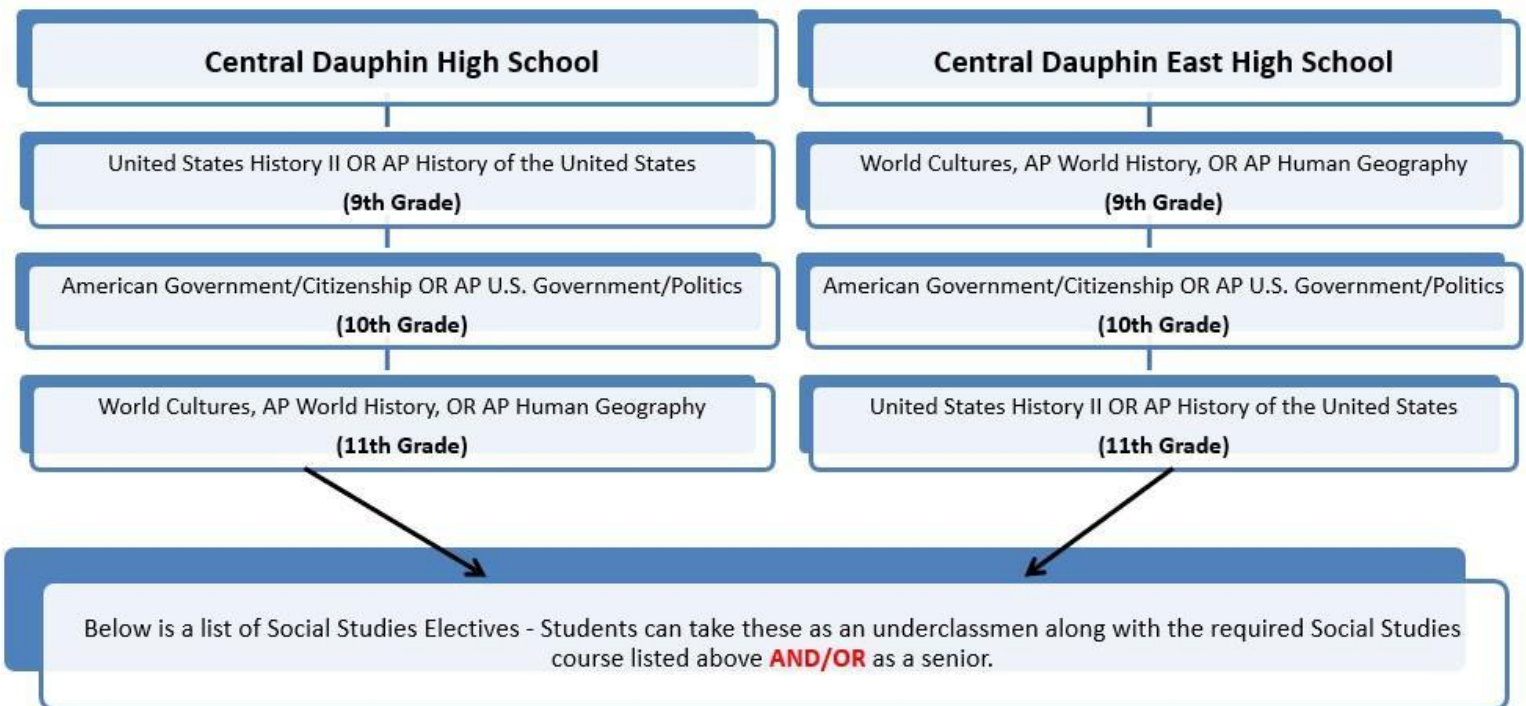
Please see page 3 for additional graduation requirements.

Students may not satisfy more than one required English credit by taking more than one English course during their junior year. Any additional English course would count as an elective credit.

Central Dauphin School District High School English Course Flowchart

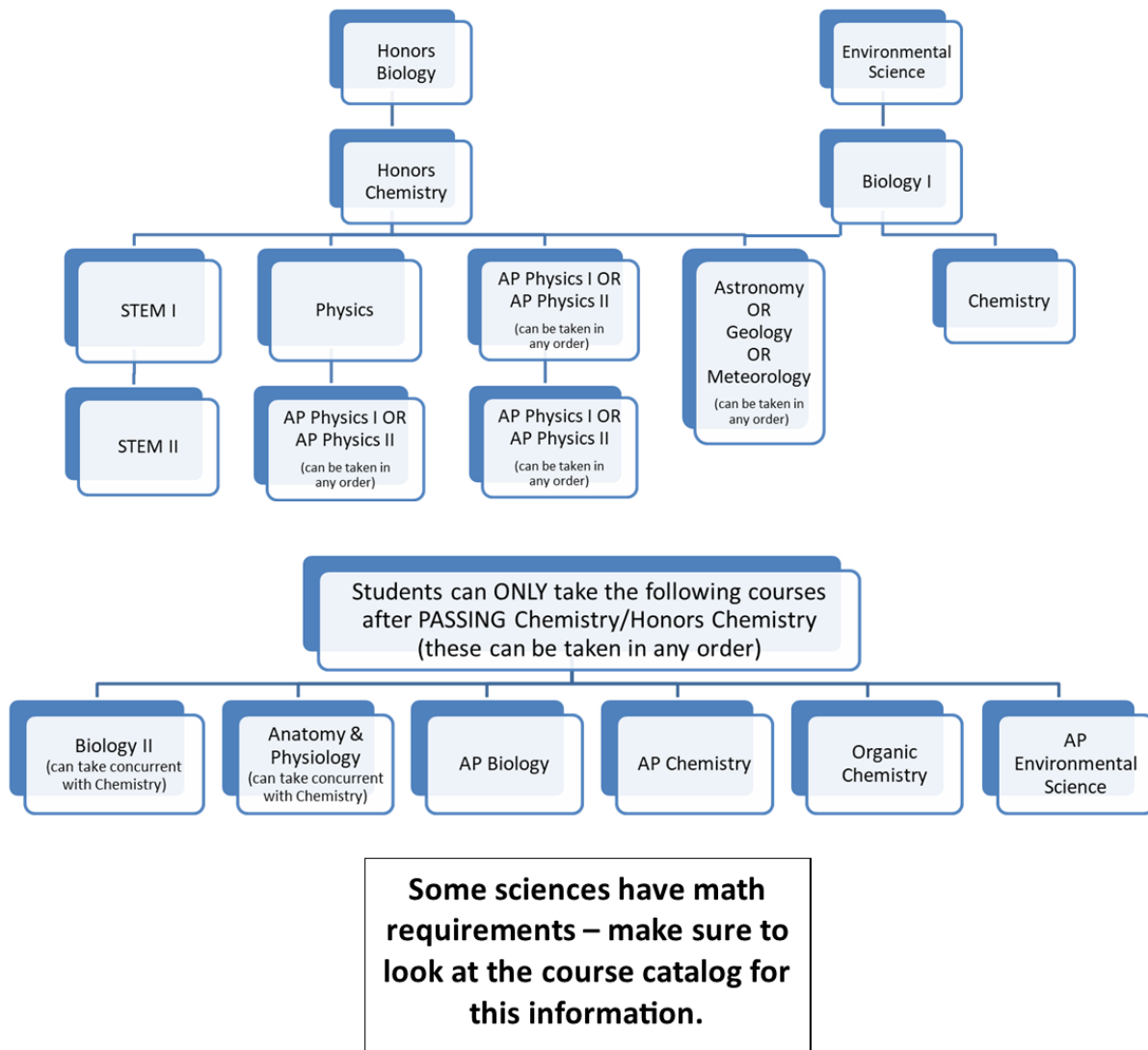


Central Dauphin School District High School Social Studies Course Flowchart

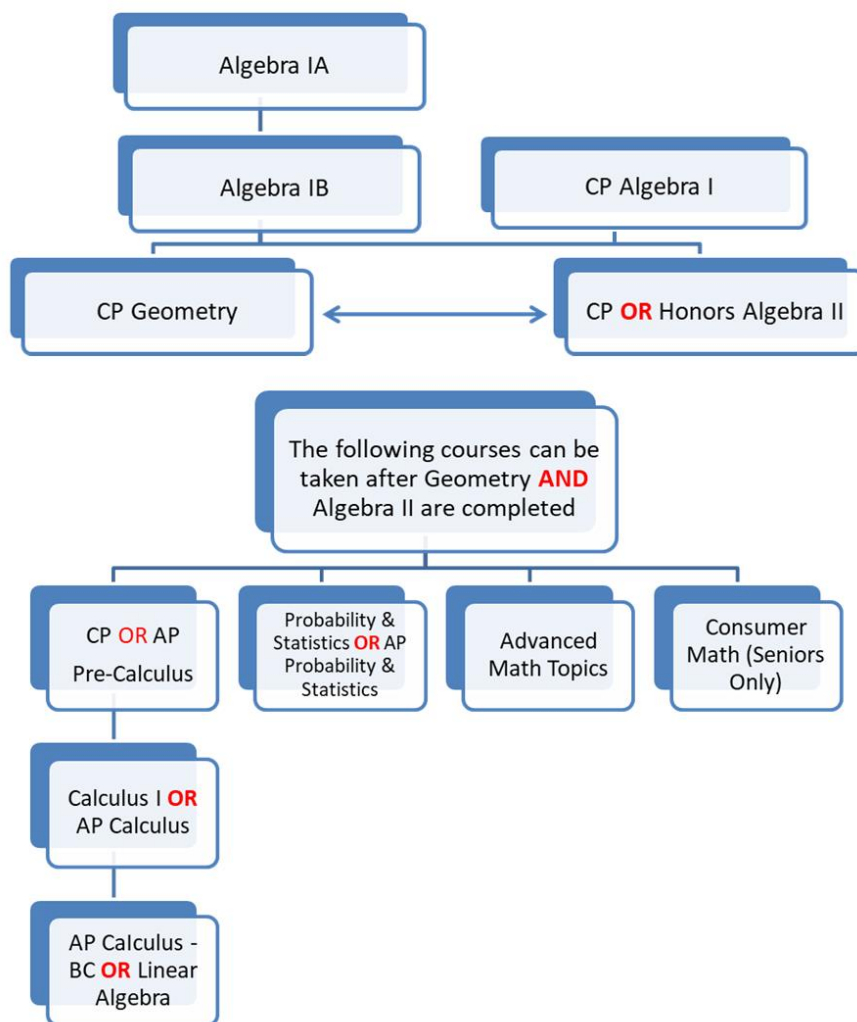


- | | | |
|------------------------------|-----------------------------------|-------------------------|
| • African American Studies 1 | • Economics | • AP Psychology |
| • African American Studies 2 | • AP European History | • Psychology |
| • Critical Media Literacy | • History of Western Civilization | • Sociology |
| • AP Economics (Micro/Macro) | • Multicultural History | • U.S. Military History |

Central Dauphin School District High School Science Course Flowchart



Central Dauphin School District High School Math Course Flowchart





The Central Dauphin School District participates in the Dauphin County Technical School program. To be enrolled at the Dauphin County Technical School, a student must be at least in grade nine.

Students with disabilities who receive services through an IEP or 504 Plan or English Learners may attend Dauphin County Technical School with all services and programs provided.

Entrance Procedures

Each student, in addition to completing the application, will need the approval of a parent or guardian. All interested students can receive an application from their home school and should submit it through their counselor.

Program of Studies

Dauphin County Technical School offers a one-year exploratory experience followed by a three-year approved program. Approximately fifty percent of the time is spent in vocational shops or laboratories; the remainder in general education and related trade courses. Trade courses offered include shop or laboratory and theory work in the following areas:

9th Grade Exploratory Program

<u>Construction and Manufacturing</u>	<u>Visual Arts and Information Technology</u>	<u>Health Sciences and Public Services</u>	<u>Transportation</u>
Building Construction Technology	Commercial Art	Cosmetology	Automotive Technology
Carpentry	Computer Networking Technology	Culinary Arts	Collision Repair Technology
Electrical Construction & Maintenance	Drafting & Design Technology	Dental Assistant	Diesel Technology
Heating, Ventilation, & Air Conditioning	Electronics Engineering Technology	Emergency & Protective Services	Small Engine Equipment Technology
Landscaping and Greenhouse Production		Medical Assistant	
Masonry	Web Development & Design	Nursing Foundations	
Welding Technology		Veterinary Assistant	

USING THE CATALOG

Counselors will use a copy of the Educational Planning Form when helping students plan a program. Students can also use this form as a worksheet when planning their course selections. Graduation requirements in this catalog should be carefully checked during the planning process. If students need help in planning a program, they should contact a counselor. Students are encouraged to discuss selections with their guardians.

SCHEDULING

Student Scheduling

Counselors meet with groups of students to introduce the scheduling process, academic planning guide and course selection sheets. Students are encouraged to discuss this information with their parent/guardians, and teachers. Evening meetings are held to properly inform parents/guardians regarding curricular programming, course descriptions and the selection process. Following these presentations counselors meet with students to complete their course selection sheets. If students have questions or concerns about their selections, they may schedule a time to meet with their counselor.

Special Scheduling Notes

1. In grades 9 and 10, students will follow the recommended program as described for the college preparatory or academic programs. In grades 11 and 12, students must schedule a minimum of 7.0 or 6.5 credits respectively.
2. No student should schedule a course with content that is below that student's level of achievement.
3. Please contact your school's Counseling Office for information regarding when course change requests will be accepted.
4. Multiple data points will be reviewed for student placement in Reading courses.
5. A student must maintain a minimum average of 40% to attend a Central Dauphin School District approved summer school program. Permanent incompletes may not be made up by attending summer school.
6. A course in which a student has earned credit in grades 9-11 may not be scheduled for credit a second time. Courses may be schedule for review with the permission of the principal; however, no credit may be awarded.
7. ***Students may not satisfy more than one required English credit by taking more than one English course during their junior year. Any additional English course would count as an elective credit.***

ENGLISH DEPARTMENT

English Summer School Requirement: Students who fail English in the 9th, 10th, 11th, or 12th grade must attend a Central Dauphin School District approved Summer School in order to schedule the next sequential English class and complete the requirements for graduation.

The Keystone Exams are a component of Pennsylvania's system of high school graduation and federal accountability requirements. Beginning with the class of 2023, students will have a variety of pathways to complete the requirements for graduation.

Students may not satisfy more than one required English credit by taking more than one English course during their Junior year. Any additional English course would count as an elective credit.

51051 Freshman English

1.0 Credit 30 Cycles 6 Periods 1.0 WT

This course focuses on the development of writing, literature, and reading skills. The literature is a survey of the major genres of poetry, short story, drama, and novel. Reading skills and vocabulary development are stressed. Library research techniques are reinforced. Mastery of skills will provide students the opportunity to elect Sophomore College Prep English.

51061 Freshman College Prep English (NCAA Approved)

1.0 Credit 30 Cycles 6 Periods 1.0 WT

This course is designed for students who plan to enter college after graduation. It includes integrated work in grammar, vocabulary, and literature. Library research techniques are reinforced.

51071 Freshman Honors English (NCAA Approved)

1.0 Credit 30 Cycles 6 Periods 1.04 WT

This course is designed to prepare the student for the advanced placement English course and exam in the senior year. Students begin to focus on critical and analytical skills in an informational research paper. Additional writing topics include narrative, expository, creative, and persuasive. Literature study includes a survey of the major genres.

51053 Sophomore English

1.0 Credit 30 Cycles 6 Periods 1.0 WT

RECOMMENDED: *Freshman English*

This continuation of the sequence provides further development in writing and literature. The literature focus is on American authors with an emphasis on growth of reading and vocabulary skills.

51063 Sophomore College Prep English (NCAA Approved)

1.0 Credit 30 Cycles 6 Periods 1.0 WT

RECOMMENDED: *Freshman College Prep English*

The writing focus in this course is the introduction to and completion of the informational or argumentative research paper using proper research procedures. Students continue to develop reading and vocabulary skills with an emphasis on Latin and Greek roots for PSAT preparation. The literature focus is on major American authors in the various genres.

51073 Sophomore Honors English (NCAA Approved)

1.0 Credit 30 Cycles 6 Periods 1.04 WT

RECOMMENDED: *80% or better in Freshman Honors English or departmental approval*

The writing emphasis is on the completion of an argumentative research paper and an introduction to the literary critique. PSAT preparation is addressed through continued vocabulary study. American authors are stressed through study of the various genres.

51055 Junior English**1.0 Credit 30 Cycles 6 Periods 1.0 WT****RECOMMENDED:** *Sophomore English*

The continued sequence focuses on improving skills in reading and writing. Research techniques are introduced. Students study various genres of literature using the works of major British authors. Reading for life-long learning is an emphasis.

51065 Junior College Prep English (NCAA Approved)**1.0 Credit 30 Cycles 6 Periods 1.0 WT****RECOMMENDED:** *Sophomore College Prep English*

The writing focus this year is on the argumentative research paper as well as an introduction to critical literary analysis. SAT preparation is the vocabulary emphasis. Literature study will focus on British literature in various genres.

51075 Junior Honors English (NCAA Approved)**1.0 Credit 30 Cycles 6 Periods 1.04 WT****RECOMMENDED:** *80% or better in Sophomore Honors English or departmental approval*

British poetry, drama, non-fiction, and novels will be studied in depth. Critical analysis of literature and advanced research skills are taught. SAT preparation is the vocabulary focus.

51057 Senior English**1.0 Credit 30 Cycles 6 Periods 1.0 WT****RECOMMENDED:** *Junior English*

The final year of the sequence builds reading, vocabulary, and writing skills in relation to career opportunities. Research techniques culminate in an independent project. The literary focus is on World literature including additional American and British authors as well as reading for life-long learning.

51067 Senior College Prep English (NCAA Approved)**1.0 Credit 30 Cycles 6 Periods 1.0 WT****RECOMMENDED:** *Junior College Prep English*

The independent research paper and continued development of literary critical analysis writing skills are stressed. The literature emphasis is on World literature, including additional American and British authors.

51087 Senior Advanced Placement English (NCAA Approved)**1.0 Credit 30 Cycles 6 Periods 1.08 WT****RECOMMENDED:** *80% or better in Junior Honors English*

The literature studied is selected from master works of world authors. At all times, the objective is to understand completely the particular piece of literature being studied. Concentration is placed upon the study of poetry, drama, the novel, and essay. Selections are from classical works as well as from contemporary works. Writing is done both inside and outside the classroom. Oral presentations are also included. Students are encouraged to take the AP Exam which is offered each Spring. Satisfactory Advanced Placement test scores may result in college credit or placement.

A summer reading assignment is required.

51506 Twentieth Century Literature (NCAA Approved)**1.0 Credit 30 Cycles 6 Periods 1.04 WT**

Students will read a multicultural selection of English-language literature written during the twentieth century, including examples of the novel, the short story, non-fiction, drama, and poetry. An emphasis will be placed on critical thinking skills and on the historical/social context of the time. This is a writing intensive course offered only to students with strong English skills. *Twentieth Century Literature may count as an English credit for Seniors.*

51508 Multicultural Literature (NCAA Approved)**1.0 Credit 30 Cycles 6 Periods 1.0 WT**

Students will read, comprehend, discuss, and write meaningfully about literary works based on a foundation centered on multicultural texts representing our uniquely diverse school district and America. Pieces will include African American, Asian, Hispanic, and other culturally significant pieces in the form of novels, short stories, non-fiction, drama, and poetry. An emphasis will be placed on critical thinking skills and on the historical/social context of the time. Students will develop an appreciation of the differences in and connections among the traditions of various cultures. *Multicultural Literature may count as an English credit for Juniors and Seniors.*

In addition to the required English courses listed previously, the electives that follow are also available. These elective courses may be scheduled but may not be substituted for the required English courses. They may be counted as Arts and Humanities credit or electives. The English courses listed below will not have mid-term or final exams.

51106 Dramatic Arts I – Survey of Theater and Film Studies**1.0 Credit 30 Cycles 6 Periods 1.0 WT**

This course is intended to develop, encourage, and stimulate an appreciation of theater and film. Students will learn to critically analyze the arts of writing, acting, directing, and designing for stage and screen. Examination of genres and conventions of theater and film will enhance student appreciation of dramatic arts in this participation focused course. *This course is available to Sophomores, Juniors and Seniors.*

51706 Dramatic Arts II – Introduction to Film Analysis**1.0 Credit 30 Cycles 6 Periods 1.08 WT**

Dramatic Arts I is strongly recommended but not required. This course in visual arts offers students a broad introduction to the medium of film, while inviting conversations about new media, television, and film's connection to other arts, including photography, painting, theater, and web video. The class will consider such issues as: the process of contemporary film production and distribution; the nature of basic film forms; selected approaches to film criticism; comparisons between film and the other media; genre; auteurism; marketing; and diversity of representation. Introduction to Film concentrates less on form and more on the cultural elements of film. *CHS-Pitt option may be available.*

51206 Public Speaking (NCAA Approved)**0.5 Credit 15 Cycles 6 Periods 1.0 WT**

This course is designed for the student who has a desire to further develop speaking techniques. The principles of public speaking will be explored in depth through such varied activities as learning the mechanics of speech, debate, parliamentary procedure, group discussion, oral interpretation, radio and TV programming and participation in speech contests. Other activities include the study of phonetics and an exploration of speech problems.

51306 Creative Writing (NCAA Approved)**1.0 Credit 30 Cycles 6 Periods 1.0 WT**

This course is designed for students who have some skill and interest in writing and want to develop their talents and channel their abilities into creative writing projects. Students will write fiction, poetry, plays, and creative non-fiction. The conventions and techniques common in each category will be addressed and students will be expected to utilize these skills within their own pieces. Each student will be a critical writer, reader, and editor of his or her own work. A final portfolio will be crafted at the end of the year to showcase their growth.

51406 Creative Writing II**1.0 Credit 30 Cycles 6 Periods 1.0 WT****PREREQUISITE:** *Creative Writing*

This course is designed for students who excelled in **Creative Writing**. Strong comprehension of writing conventions is required. Students enrolled in this course will further develop their writing in the form of poetry, fiction, plays and non-fiction writing. All writing will be considered for publications, contests and use in the level I course. Students will be required to create and edit several editions of the literary magazine. A final portfolio will be crafted at the end of the year to showcase their writing growth.

51416 Journalism I (NCAA Approved)**1.0 Credit 30 Cycles 6 Periods 1.0 WT**

During the year students will learn skills and techniques that they can then apply to producing a yearbook and/or newspaper. Such skills will focus on clarity and accuracy when reporting the aspects of any given event. Also, the techniques necessary to create proper, attractive layouts for various journalistic publications will be taught. The various writing techniques and assignments should increase the student's awareness of international, state, and local affairs, as well as development in his directness, accuracy, and sound judgement.

51426 Journalism II**1.0 Credit 30 Cycles 6 Periods 1.0 WT****PREREQUISITE:** Journalism I

This course is for students who have completed the first course in Journalism and are involved on staffs of school publications.

51606 Poetry (NCAA Approved)**1.0 Credit 30 Cycles 6 Periods 1.0 WT**

This course is designed for students who have interest in poetry analysis, composition, and performance. Emphasis will be on development of student talents through exploration of major styles of poetry and opportunities to practice their own writing and performance style. Academic benefits will include improved reading comprehension and analytical response, as well as precise written expression and fluency. Students will write and perform a variety of pieces for the local poetry community and publish their works in public forums.

51616 Television Broadcast**1.0 Credit 30 Cycles 6 Periods 1.0 WT**

Students will create and maintain the televised announcements at the beginning of each school day. Students will work on various projects including commercials, newscasts, and public service announcements. Student will be introduced to the various technical and communication skills necessary to perform in the broadcast industry. *This course is available to Juniors and Seniors only.*

READING DEPARTMENT

52011 High School Literacy I

1.0 Credit 30 Cycles 6 Periods 1.0 WT

This course focuses on improving comprehension of fiction and non-fiction text, increasing vocabulary, building personal power through reading, increasing fluency, evaluating text, and acquiring reading tools to aid the high school experience and beyond. Students are scheduled for this course based on one or more of the following: Scholastic Reading Inventory, state assessment score, and teacher or counselor recommendation.

52028 High School Literacy II

1.0 Credit 30 Cycles 6 Periods 1.0 WT

This course is a continuation of High School Literacy I. It is designed for 10th, 11th, or 12th grade students. There is a continued focus on the basic reading areas (linguistics, vocabulary, comprehension, study skills, and test preparation) with emphasis on mastery and refinement. There is an added focus on the skills needed to be a proficient reader after high school. Students are scheduled for this course based upon one or more of the following: Scholastic Reading Inventory, state assessment score, previous Literacy courses, and teacher or counselor recommendation.

SOCIAL STUDIES DEPARTMENT

53000 United States History II (NCAA Approved)

1.0 Credit 30 Cycles 6 Periods 1.0 WT

This course is recommended for 9th grade students. It covers the time span from World War I to the present. It includes the general study of the growth of our nation along with related Pennsylvania and minority histories. Key aspects of economic, military, political, geographic as well as social and cultural areas are to be studied.

53086 Advanced Placement History of the United States (NCAA Approved)

1.0 Credit 30 Cycles 6 Periods 1.08 WT

This course involves an in-depth study of the U.S. History spanning from mid-seventeenth century America to the present with emphasis on events, causes and results. It also acquaints the student with various interpretations of the forces molding American history. There is also an emphasis on source readings, research, and essay exams. Students are encouraged to take the AP exam that is offered each Spring. Satisfactory Advanced Placement Test scores may result in college credit or placement. *This course may be substituted for 9th grade U.S. History II.*

53103 American Government and Citizenship (NCAA Approved)

1.0 Credit 30 Cycles 6 Periods 1.0 WT

This course is recommended for 10th grade students. It is a comprehensive study of citizenship, national state and local governments, political parties, and politics. It will involve an in-depth study of the three branches of government and how they are influenced and guided by interest groups and lobbyists. The U.S. Constitution and Bill of Rights are also studied. The relationship of government to the individual, the family, community, and the economy, as well as contemporary issues are explored.

53183 Advanced Placement United States Government and Politics (NCAA Approved)

1.0 Credit 30 Cycles 6 Periods 1.08 WT

The course is designed to give students a critical perspective on government and politics in the United States. The course develops a knowledge base that will allow the student to further analyze current trends and special case studies relevant to the American Political system. The course is developed in accordance with the Advanced Placement program. Students are encouraged to take the AP exam that is offered each Spring. Satisfactory Advanced Placement Test scores may result in college credit or placement. *This course may be substituted for American Government and Citizenship. CHS-Pitt option may be available.*

53200 World Cultures (NCAA Approved)

1.0 Credit 30 Cycles 6 Periods 1.0 WT

This course is recommended for 11th grade students. Worlds Cultures presents students with an introduction to anthropology and an in-depth look at six major culture areas: sub-Saharan Africa, the Indian subcontinent, China, Japan, Russia, and the Middle East. The culture areas are presented showing the effects of geography, history, politics, and economics on the development of culture, emphasizing understanding of, and appreciation for, differences and similarities.

53286 Advanced Placement World History (NCAA Approved)

1.0 Credit 30 Cycles 6 Periods 1.08 WT

The AP World History course will develop greater understanding of the evolution of global process and contacts in interaction with different types of human societies. This understanding is advanced through a combination of selective factual knowledge and appropriate analytical skills. The course highlights the nature of changes in international frameworks and their causes and consequences, as well as comparisons among major societies. Students are encouraged to take the AP exam that is offered each Spring. Satisfactory Advanced Placement Test scores may result in college credit or placement. *This course may be substituted for World Cultures.*

53289 Advanced Placement Human Geography (NCAA Approved)**1.0 Credit 30 Cycles 6 Periods 1.08 WT**

The purpose of the Advanced Placement course in Human Geography is to introduce students to the systematic study of patterns and processes that have shaped human use, alteration, and understanding of the Earth's surface. Students are presented with the curricular equivalent of an introductory college-level course in human and cultural geography. The course allows students to become more engaged in contemporary global issues and develop more multicultural viewpoints. Students are encouraged to take the AP exam that is offered each Spring. Satisfactory Advanced Placement Test scores may result in college credit or placement. *This course may be substituted for World Cultures OR taken as an elective.*

53108 Sociology (NCAA Approved)**0.5 Credit 15 Cycles 6 Periods 1.0 WT**

This course is designed to provide the student with a greater understanding of people's relationships and their place in society. Themes for this topic include the development of personality traits, interaction between people, social movements, and crime and deviance.

53308 African American Studies (NCAA Approved)**0.5 Credit 15 Cycles 6 Periods 1.0 WT**

This is a half-year course that examines both the history and culture of Africa and the African American experience in an interdisciplinary format. This would include an analysis of the unique historical, cultural, and social developments from the Middle Passage to the 1920's. The course will also address the literary and artistic contributions of African Americans to American culture.

53312 African American Studies II (NCAA Approved)**0.5 Credit 15 Cycles 6 Periods 1.0 WT****PREREQUISITE:** *African American Studies*

This is a half-year course that examines both the history and culture of Africa and the African American experience in an interdisciplinary format. This would include an analysis of the unique historical, cultural, and social developments from the 1920's to present day. The course will also address the literary and artistic contributions of African Americans to American culture.

53309 Multi-Cultural History (NCAA Approved)**0.5 Credit 15 Cycles 6 Periods 1.0 WT**

This course traces the history of minority groups in the United States, how they have contributed to our country, and develops an overall appreciation for the variety of culture in America.

53310 Critical Media Literacy (NCAA Approved)**0.5 Credit 15 Cycles 6 Periods 1.0 WT**

This semester elective course is an introduction to the critical study of media. Students will examine the various types of media to develop critical media literacy skills. This course is designed to teach students critical-thinking skills, a firm grasp of relevant history and practical knowledge about mass media, new literacy, political media, consumer media, digital citizenship, social media, and civil discourse. The course seeks to help students recognize the differences between facts and rumors, news and promotions, news and opinion, bias and fairness, assertion and verification, and evidence and inference. Students will learn how to find the reliable information they need to make decisions, take action, make judgements, and responsibly use and share information through various mass media platforms.

53311 U.S. Military History (NCAA Approved)**0.5 Credit 15 Cycles 6 Periods 1.0 WT**

Military History is more than just a story about armed conflict; it is the story of how societies form institutions for collective security and how those institutions operate in peace and war. It includes the entire range of economic, social, legal, political, technological, and cultural issues that arise from a nation's need to organize violence to preserve its existence and accomplish its goals. This course will challenge students to evaluate and appreciate American's military heritage.

53476 History of Western Civilization (NCAA Approved)**1.0 Credit 30 Cycles 6 Periods 1.04 WT**

This is a course that stresses the history of European civilization from 1600 to Modern Times. It includes a review of the rise of feudalism, medieval town life and the Renaissance. Emphasis is given to the Age of Discovery, Democratic Revolutions in World War I, the rise of communism and dictators, World War II and Europe today.

53786 Advanced Placement European History (NCAA Approved)**1.0 Credit 30 Cycles 6 Periods 1.08 WT**

Advanced European History is geared to those students with extra ambition and initiative. The course surveys European history from the fall of Rome to the present with particular emphasis from 1500 to the contemporary period. An attempt is made to blend cultural, economic, political, and social history. Procedures include resource reading, research papers, and essay writing. Students are encouraged to take the AP exam that is offered each Spring. Satisfactory Advanced Placement Test scores may result in college credit or placement. *CHS-Pitt option may be available.*

53506 Psychology (NCAA Approved)**1.0 Credit 30 Cycles 6 Periods 1.0 WT**

Psychology examines the complex nature of human behavior. Major areas of concentration include history and methods of study, the brain and its functions, motivation, emotion, learning, states of consciousness, development and the causes and treatment of abnormal behavior.

53586 Advanced Placement Psychology (NCAA Approved)**1.0 Credit 30 Cycles 6 Periods 1.08 WT**

The purpose of the AP course in Psychology is to introduce students to the systematic and scientific study of the behavior and mental processes of human beings and other animals. Students are exposed to the psychological facts, principles, and phenomena associated with each of the major subfields within psychology. They also learn about the methods psychologists use in their science and practice. Students are encouraged to take the AP exam that is offered each Spring. Satisfactory Advanced Placement Test scores may result in college credit or placement. *CHS-Pitt option may be available.*

53606 Economics (NCAA Approved)**1.0 Credit 30 Cycles 6 Periods 1.04 WT**

The purpose of a course in economics is to give students a thorough understanding of the principles of economics that apply to the functions of individual decision makers and economic systems as a whole, both consumers and producers. It places primary emphasis on the nature and functions of the product markets and includes the study of factor markets. The course also examines the role of government in promoting greater efficiency and equity in the economy. It places emphasis on the study of national income and price determination, and develops students' familiarity with economic performance measures, economic growth, and international economics. *Economics may count as a 4th math credit for Seniors.*

53868 Advanced Placement Economics Micro/Macro (NCAA Approved)

1.0 Credit 30 Cycles 6 Periods 1.08 WT

AP Macroeconomics

The purpose of an AP course in macroeconomics is to give students a thorough understanding of the principles of economics that apply to an economic system as a whole. Such a course places particular emphasis on the study of national income and price-level determination, and also develops students' familiarity with economic performance measures, the financial sector, stabilization policies, economic growth, and international economics.

AP Microeconomics

The purpose of an AP course in microeconomics is to give students a thorough understanding of the principles of economics that apply to the functions of individual decision makers, both consumers and producers, within the economic system. It places primary emphasis on the nature and functions of product efficiency and equity in the economy.

Students are encouraged to take the AP exam that is offered each Spring. Satisfactory Advanced Placement Test scores may result in college credit or placement. *AP Economics may count as a 4th math credit for Seniors.*

SCIENCE DEPARTMENT

When students are selecting a science class, it is recommended that they take all the different branches of Science (Biology, Chemistry, and Physics) before taking an Advanced Placement Science course.

The Keystone Exams are a component of Pennsylvania's system of high school graduation and federal accountability requirements. Beginning with the class of 2023 students will have a variety of pathways to complete the requirements for graduation.

55101 Environmental Science (NCAA Approved)

1.0 Credit 30 Cycles 6 Periods 1.0 WT

This course is required for 9th grade students not enrolled in Honors Biology. Environmental Science is the field of science that studies the interactions of the physical, chemical, and biological components of the environment and also the relationships and effects of these components with the organisms in the environment. The study of ecosystems, energy and food production, land-use issues, air and water quality, and population demographics are all major aspects of working toward a sustainable future on Earth. *Outdoor activities are a part of this course.*

55171 Honors Biology (NCAA Approved)

1.0 Credit 30 Cycles 6 Periods 1.04 WT

PREREQUISITE: *Algebra I or Algebra 1B or Geometry*

Honors Biology is an academically challenging course open to students who exhibit a strong work ethic, solid study habits, and self-discipline, and who have been recommended by their teachers. Biological systems at the cellular level will be examined in detail. Other topics will include ecology, biochemistry, genetics, biotechnology, and evolution. Students will be expected to learn, understand, and explain complex concepts and processes using appropriate scientific terminology. ***Successful completion of this course replaces Environmental Science for freshmen.*** *This course is a lab science.*

55113 Biology I (NCAA Approved)

1.0 Credit 30 Cycles 6 Periods 1.0 WT

Biology I emphasizes life processes, cell structure and function, reproduction and heredity, genetics, and evolution, and incorporates an introduction to ecology and environmental science. Student-centered learning activities may include scientific problem solving, inquiry-based investigations, independent and group projects, and development of inductive and deductive reasoning skills. Students must have taken Environmental Science before taking this course. *This course is a lab science.*

55378 Honors Chemistry (NCAA Approved)

1.0 Credit 30 Cycles 6 Periods 1.04 WT

PREREQUISITE: *Honors Biology or Biology I*

PREREQUISITE OR CONCURRENT: *Algebra II*

Honors Chemistry is an academically challenging, intensive mathematics-oriented science designed for the college preparatory student. ***Students must have successfully completed Algebra I or Algebra IB with a 75% average.*** Students will experience such topics as stoichiometry, nomenclature, atomic theory, equilibrium, equation writing and balancing, solutions, and other related topics. Methods of student evaluation will include problem solving, laboratory experiments, formal lab reports, quizzes, and exams. Students will hone their observational, organizational, and reasoning skills as well as their problem-solving abilities. *This course is a lab science.*

55368 Chemistry (NCAA Approved)**1.0 Credit 30 Cycles 6 Periods 1.04 WT****PREREQUISITE:** *Honors Biology or Biology I***PREREQUISITE OR CONCURRENT:** *Algebra II*

Chemistry is a mathematics-oriented science designed for the college preparatory student. ***Students must have successfully completed Algebra I or Algebra IB with a 75% average.*** Students will experience such topics as stoichiometry, nomenclature, atomic theory, equilibrium, equation writing and balancing, solutions, and other related topics. Methods of student evaluation will include problem solving, laboratory experiments, quizzes, and exams. Students will hone their observational, organizational, and reasoning skills as well as their problem-solving abilities. *This course is a lab science.*

55566 Physics (NCAA Approved)**1.0 Credit 30 Cycles 6 Periods 1.04 WT****PREREQUISITE:** *Algebra II*

This course is strongly recommended to complete the science sequence (Biology, Chemistry, and Physics) for college prep juniors or seniors. This course is designed to provide an understanding of the fundamental principles of mechanics including kinematics, Newtonian dynamics, work, and energy, along with a variety of additional topics. The subject is integrated with classroom discussions, demonstrations, laboratory investigations, and problem-based learning activities. Strong applied math and problem-solving skills are recommended. *This course is a lab science.*

55128 Biology II (NCAA Approved)**1.0 Credit 30 Cycles 6 Periods 1.04 WT****PREREQUISITE OR CONCURRENT:** *Chemistry or Honors Chemistry*

Biology II provides students with an in-depth study of the structure, function, taxonomy, and interrelationships between the six kingdoms of living organisms. Both living and preserved specimens are utilized in this challenging course, which includes dissection of various organisms. *It is strongly recommended that students have earned a 75% or better in Biology I/Honors Biology before attempting this course. This course is a lab science.*

55476 Organic Chemistry (NCAA Approved)**1.5 Credits 30 Cycles 9 Periods 1.04 WT****PREREQUISITE:** *Chemistry or Honors Chemistry*

Organic Chemistry deals exclusively with the compounds of the element carbon. The purpose of the course is to fulfill the needs of those students whose professional goals lie in the fields of science, medicine, nutrition, and other related subjects, especially those majoring in Biology, Chemistry, Biochemistry, Chemical Engineering, Pre-med, and Nursing. The course includes the study of petroleum, dyes, drugs, natural products, and fuels. The main goal of the course is to show the thinking process that goes into the synthesis and identification of organic compounds. *Students should have earned an 80% or above in chemistry. This course is a lab science.*

55686 Anatomy & Physiology (NCAA Approved)**1.0 Credit 30 Cycles 6 Periods 1.04 WT****PREREQUISITE:** *Honors Biology or Biology I***PREREQUISITE OR CONCURRENT:** *Chemistry*

This course covers the basics of human anatomy and physiology including anatomical terminology, basic biochemistry, cells, and tissues. The course explores anatomy through the systems of the body and includes mammalian dissection and practicals. The course is designed for students intending to pursue careers in medical and allied health fields. *This course is a lab science.*

55605 STEM I (NCAA Approved)**0.5 Credit 15 Cycles 6 Periods 1.0 WT****PREREQUISITE:** *Honors Biology or Biology I*

This semester STEM course – science, technology, engineering, and math – is for junior and senior students interested in developing problem-solving skills to solve real-world problems using the scientific method and engineering design process. Students will be immersed in hands-on inquiry and open-ended exploration through an emphasis on project-based learning. Students will identify a problem, research a solution, and work to solve the problem through project-based activities; students will meet STEM professionals from the community and learn about career options within the STEM field. *This course is a lab science.*

55610 STEM II (NCAA Approved)**0.5 Credit 15 Cycles 6 Periods 1.0 WT****PREREQUISITE:** *STEM I*

This semester course – science, technology, engineering, and math – is for junior and senior students who have taken STEM I and are interested in continuing to develop their problem-solving skills to solve real-world problems through the use of the scientific method and engineering design process. Students will continue to be immersed in hands-on inquiry and open-ended exploration through an emphasis on project-based learning. Students will either continue doing research and problem-solving on the project from their STEM I class, or they can identify a new problem to focus on. *This course is a lab science.*

55609 Geology (NCAA Approved)**0.5 Credit 15 Cycles 6 Periods 1.0 WT**

Geology is a semester course which will explore the study of Earth's solid features, structure, and function. This will include both historical and physical geology and an analysis of a dynamic Earth. Units of study include Earth's Place in the Solar System and Earth's Structure, Earth's Geologic Time, Dynamic Earth, Earth's Geologic Cycles, and Earth's Geologic Resources. *Students must have taken Biology to be eligible for this course.*

55607 Astronomy (NCAA Approved)**0.5 Credit 15 Cycles 6 Periods 1.0 WT**

Astronomy is a semester course which will explore the study of the celestial objects, space, and the physical universe. Units of study include Astronomy as the first science, the Celestial Sphere and Our Sky, Earth's Place in the Solar System and Larger Universe, Space Exploration and Beyond Our Solar System. *Students must have taken Biology to be eligible for this course.*

55608 Meteorology (NCAA Approved)**0.5 Credit 15 Cycles 6 Periods 1.0 WT**

Meteorology is a semester course which will explore the study of Earth's Atmosphere regarding weather and climate. The units of study include: The Formation and Structure of the Atmosphere, the Elements of Weather, Weather Systems and Forecasting, Storms and Severe Storms, and Climate Systems and Climate Change. *Students must have taken Biology to be eligible for this course.*

55186 Advanced Placement Biology (NCAA Approved)**1.5 Credits 30 Cycles 9 Periods 1.08 WT****PREREQUISITE:** *Chemistry or Honors Chemistry*

The AP Biology course is designed to be the equivalent of a college introductory course for biology majors. The topics, concepts, and themes of the course include the structure and function of organisms, cellular processes, genetics, evolution, the unity and diversity of organisms, and animal behavior. The independent study approach in lab and text work requires great self-discipline and extensive work outside the classroom. Students who have demonstrated above average performance in chemistry, biology and math can be successful in AP Biology. Students are encouraged to take the AP Exam which is offered each Spring. Satisfactory Advanced Placement Test scores may result in college credit or placement. ***Summer assignments may be required.*** *This course is a lab science. CHS-HU option may be available.*

55386 Advanced Placement Chemistry (NCAA Approved)**1.5 Credits 30 Cycles 9 Periods 1.08 WT****PREREQUISITE:** *Chemistry or Honors Chemistry*

The AP Chemistry course is designed to be the equivalent of a college introductory course for science majors. The topics, concepts, and themes of the course include the study of chemical kinetics, chemical equilibrium, electrical energy and chemical change, oxidation and reduction, and descriptive chemistry. Chemical terms are discussed from a quantitative view, and formulas for these terms are derived. The laboratory work includes fundamental principles and an introduction to qualitative analysis. The independent study approach in lab and text work requires great self-discipline and extensive work outside the classroom. Students who have demonstrated above average performance in Chemistry, Biology and Math can be successful in AP Chemistry. Students are encouraged to take the AP Exam which is offered each Spring. Satisfactory Advanced Placement Test scores may result in college credit or placement.

Summer assignments may be required. This course is a lab science. CHS-HU option may be available.

55589 Advanced Placement Environmental Science (NCAA Approved)**1.5 Credits 30 Cycles 9 Periods 1.08 WT****PREREQUISITE:** *Chemistry or Honors Chemistry*

The AP Environmental Science course is designed to be the equivalent of an introductory college course in environmental science. Environmental science is interdisciplinary; it embraces a wide variety of topics from different areas of study. The goal of this course is to provide students with the scientific principles, concepts, and methodologies required to understand the interrelationships of the natural world, to identify and analyze environmental problems both natural and human-made, to evaluate the relative risks associated with these problems, and to examine alternative solutions for resolving or preventing them. Students are encouraged to take the AP Exam which is offered each Spring. Satisfactory Advanced Placement Test scores may result in college credit or placement. *This course is a lab science.*

55587 Physics I – Advanced Placement (NCAA Approved)**1.5 Credits 30 Cycles 9 Periods 1.08 WT****PREREQUISITE:** *Algebra II*

The AP Physics course is designed to be the equivalent of a non-calculus college introductory course for science majors. This course includes topics in both classical and modern physics including kinematics, dynamics, work, power, energy, momentum, rotation, oscillations, waves, and circuits. The major goal of this course is to understand the basic principles of physics and apply these principles to the solution of problems. A knowledge of algebra and basic trigonometry is required. The basic ideas of calculus may be introduced. Students are encouraged to take the AP Exam which is offered each Spring. Satisfactory Advanced Placement Test scores may result in college credit or placement. ***Summer assignments may be required. (2024-25) This course is a lab science. **CHS-HU option may be available.***

55588 Physics II – Advanced Placement (NCAA Approved)**1.5 Credits 30 Cycles 9 Periods 1.08 WT****PREREQUISITE:** *Algebra II*

The AP Physics course is designed to be the equivalent of a non-calculus college introductory course for science majors. This course includes topics in both classical and modern physics including magnetism, electromagnetic induction, optics, atomic structure, nuclear physics, special relativity heat, thermodynamics, electrostatics, and capacitors. The major goal of this course is to understand the basic principles of physics and apply these principles to the solution of problems. A knowledge of algebra and basic trigonometry is required. The basic ideas of calculus may be introduced. Students are encouraged to take the AP Exam which is offered each Spring. Satisfactory Advanced Placement Test scores may result in college credit or placement. ***Summer assignments may be required. (2025-2026) This course is a lab science. **CHS-HU option may be available.***

***Advanced Placement Physics I and Advanced Placement Physics II will be offered alternate years.**

**** Students must take both AP Physics I and AP Physics II to earn the CHS-HU credits.**

MATHEMATICS DEPARTMENT

NOTE: To continue to the next level of proficiency, it is strongly recommended that the student have a 70% or better average at the previous level unless otherwise stated under the course description.

The Keystone Exams are a component of Pennsylvania's system of high school graduation and federal accountability requirements. Beginning with the class of 2023, students will have a variety of pathways to complete the requirements for graduation.

If a student taking Algebra I as an eighth grader fails to pass the Algebra I Keystone Exam, it is highly recommended that student retake Algebra I in ninth grade.

54052 Algebra IA

1.0 Credit 30 Cycles 6 Periods 1.0 WT

This year-long course is the first half of a two-year program to prepare students for the Keystone Algebra 1 state assessment. Students who benefit from additional time and support in mathematics should take this course instead of CP Algebra 1. Topics include the Language of Algebra, Solving Linear Equations and Inequalities, Functions and Relations, and Writing and Graphing Linear Equations and Inequalities.

54053 Algebra IB

1.0 Credit 30 Cycles 6 Periods 1.0 WT

PREREQUISITE: *Algebra IA*

This year-long course is the second half of a two-year program to prepare students for the Keystone Algebra 1 state assessment. Students must successfully complete Algebra 1A to take this course. Topics include Systems of Equations, Polynomials and Factoring, Radicals, and Statistics and Probability.

54061 College Prep Algebra I (NCAA Approved)

1.0 Credit 30 Cycles 6 Periods 1.0 WT

This course is for any student planning to pursue post-secondary training, including college or trade school. Topics include problem-solving equations, linear sentences and inequalities, rates, ratios, proportions, data interpretation and description, polynomials, and graphing.

54162 College Prep Geometry (NCAA Approved)

1.0 Credit 30 Cycles 6 Periods 1.0 WT

PREREQUISITE: *Algebra I or Algebra IB*

Students will study coordinates, transformations, measurement formulas, three-dimensional figures, and right-angle trigonometry. Proof-writing will be introduced later in the year. Students will apply algebra and geometry to problem solving situations.

54172 Honors Geometry (NCAA Approved)

1.0 Credit 30 Cycles 6 Periods 1.0 WT

PREREQUISITE: *Algebra I or Algebra IB*

Students will study coordinates, transformations, measurement formulas, three-dimensional figures, and construction of proofs. Students will utilize the three different methods of proofs. The course helps students understand the basic structure of plane and solid geometry and develop powers of spatial visualization and logic reasoning. Students will apply algebra and geometry to problem-solving situations.

54260 College Prep Algebra II (NCAA Approved)**1.0 Credit 30 Cycles 6 Periods 1.0 WT****PREREQUISITE:** *Algebra I or Algebra IB*

This course is a logical expansion of Algebra concepts. Topics such as linear and quadratic expressions and equations, system of equations and inequalities, powers and roots, and polynomial functions are explored. This course satisfies graduation recommendations in the college preparatory program. Students who successfully complete this course will be prepared to take CP Pre-Calculus, and Advance Math Topics.

54270 Honors Algebra II (NCAA Approved)**1.0 Credit 30 Cycles 6 Periods 1.04 WT****PREREQUISITE:** *Algebra I or Algebra IB**A minimum of 85% overall average in the previous course is recommended.*

This course is a logical expansion of Algebra concepts. Topics such as linear and quadratic expressions and equations, powers and roots, exponential, logarithmic, trigonometric, and polynomial functions are explored. This course involves a rigorous pace that ensures comprehensive study of all topics to be covered in preparation for students interested in the study of various science, engineering, and mathematics fields. Students who successfully complete this course will be prepared to take Honors Pre-Calculus.

54807 Advanced Math Topics (NCAA Approved)**1.0 Credit 30 Cycles 6 Periods 1.0 WT****PREREQUISITE:** *Algebra I or Algebra IB, Geometry, Algebra II*

This course is for students who want to expand their knowledge of algebra, geometry, trigonometry, probability/statistics, logical reasoning, and discrete mathematics. The course will enable students to understand and reason with quantitative issues and mathematical ideas that they may encounter in college. This course will utilize the TI-83/84 graphing calculator.

54564 College Prep Pre-Calculus (NCAA Approved)**1.0 Credit 30 Cycles 6 Periods 1.0 WT****PREREQUISITE:** *Geometry, Algebra II**A minimum of 85% overall average in the previous course is recommended.*

The goal of this course is to show students how algebra can be used as a modeling language for real-life situations. Linear and quadratic functions will be reviewed. Exponential, logarithmic, rational expressions, rational equations and their graphs will be studied. Trigonometric functions will be studied in depth. The study of trigonometry is used to find the relationships between the sides and angles with triangles as well as to model real-life quantities that are periodic. This course is in preparation for Calculus.

54579 Advanced Placement Pre-Calculus (NCAA Approved)**1.0 Credit 30 Cycles 6 Periods 1.04 WT****PREREQUISITE:** *Geometry, Honors Algebra II**A minimum of 85% overall average in the previous course is recommended.*

The goal of this course is to show students how algebra can be used as a modeling language for real-life situations. Linear, quadratic, exponential, and logarithmic functions are used in modeling various problems. Rational expressions, rational equations and their graphs will be studied in depth. Partial fractions are introduced. The study of trigonometry is used to find the relationships between the sides and angles with triangles as well as to model real-life quantities that are periodic. Topics such as limits will be covered to prepare students for a rigorous course in Calculus. This course is in preparation for AP Calculus. Students are encouraged to take the Advanced Placement Test which is offered each Spring. Satisfactory Advanced Placement Test scores may result in college credit or placement.

54618 Calculus I (NCAA Approved)**1.0 Credit 30 Cycles 6 Periods 1.04 WT****PREREQUISITE:** *Pre-Calculus*

This course is designed for students not interested in an advanced placement syllabus. Students will study polynomial functions, trigonometric functions, exponential and logarithmic functions, area, average value, the derivative, the definite integral and calculus of more general functions. The course utilizes the TI-83/84 graphing calculator. This course does not incorporate the numerous Advanced Placement questions that are utilized in the Advanced Placement Calculus course.

54688 Advanced Placement Calculus – AB (NCAA Approved)**1.0 Credit 30 Cycles 6 Periods 1.08 WT****PREREQUISITE:** *Pre-Calculus*

A minimum of 85% overall average in the previous course is recommended.

AP Calculus is a college level course that covers the study of functions of one variable and related topics. Students will study polynomial functions, trigonometric functions, exponential and logarithmic functions, area, average value, the derivative, the definite integral and calculus of more general functions. The course utilizes the TI-83/84 graphing calculator and demonstrates the various types of Advanced Placement style questions throughout the course. Students are encouraged to take the Advanced Placement Test which is offered each Spring. Satisfactory Advanced Placement Test scores may result in college credit or placement. **A summer assignment is required.** *CHS-Pitt course option may be available.*

54887 Advanced Placement Calculus – BC (NCAA Approved)**1.0 Credit 30 Cycles 6 Periods 1.08 WT****PREREQUISITE:** *AP Calculus or Calculus I*

This course will include a review of Calculus I (methods of differentiations and integration). Building upon previous knowledge, students will study more advanced methods of integration, sequences, series, parametric equations, polar coordinates, vector fields and differential equations. Students are encouraged to take the Advanced Placement Test which is offered each Spring. Satisfactory Advanced Placement Test scores may result in college credit or placement. *CHS-Pitt course option may be available.*

54476 Probability and Statistics (NCAA Approved)**1.0 Credit 30 Cycles 6 Periods 1.04 WT****PREREQUISITE:** *Geometry, Algebra II*

Probability and Statistics is designed for students with a strong background in algebra. It is also aimed at the college bound student who plans to enter such fields as economics, business, education, psychology, sociology, biology, and medicine, which now require statistics for their effective pursuit. This course offers general coverage of fundamental statistical theory and develops strong problem-solving skills.

54478 AP Statistics (NCAA Approved)**1.0 Credit 30 Cycles 6 Periods 1.08 WT****PREREQUISITE:** *Geometry and Algebra II or higher*

Designed for students with a strong background in Algebra II and Geometry, this course provides in-depth coverage of fundamental statistical theory while developing professional and managerial skills. Statistical applications are growing globally in business and ecommerce and will be thoroughly investigated. This course is designed to demonstrate methods for entrepreneurs and college bound students in the fields of business, research, journalism, military science, politics, economics, education, psychology, physics, medicine, and biology. Students shall employ technology and expand their logic and writing skills in the performance of real tasks to aid in the application and exploration of graphical data summaries, probability, statistical inferences, chi-squared tests, regression & ANOVA. *CHS-Pitt option may be available.*

54986 Linear Algebra (NCAA Approved)

1.0 Credit 30 Cycles 6 Periods 1.08 WT

PREREQUISITE: *Calculus I or an AP Calculus AB test score of 4 or 5*

Linear Algebra is a required course for many STEM majors in college. An understanding of this course will greatly facilitate understanding in Physics, Chemistry, Computer Science and Statistics. The principle topics include vectors, matrices, determinants, linear transformations, eigenvalues and eigenvectors, and selected applications. *CHS-Pitt course option may be available.*

54707 Consumer Math (Seniors only)

1.0 Credit 30 Cycles 6 Periods 1.0 WT

The contents of this course will focus on the skills that students need to manage personal finances in everyday life and excel at their first jobs. The course will review various math concepts, money management skills and an introduction to probability and statistics. Internet activities and computer-based projects may be included. This course is not intended for college bound students.

WORLD LANGUAGE DEPARTMENT

62019 Latin I (NCAA Approved)

1.0 Credit 30 Cycles 6 Periods 1.0 WT

Students experience Roman civilization through language, the family, and history. They learn basic grammar and vocabulary to develop reading and comprehension skills. Students improve their English grammar by comparative language exercises and increase their own vocabulary through a comprehensive sequence of word studies.

62029 Latin II (NCAA Approved)

1.0 Credit 30 Cycles 6 Periods 1.0 WT

This course is a continuation of Latin I, introducing more grammar and vocabulary. Students will gain more insight into the life and history of the early Roman Empire with emphasis on the home, school, pastimes, and ceremonies. ***It is recommended that the student earn an 80% or higher average in Latin I to take this course.***

62038 Latin III (NCAA Approved)

1.0 Credit 30 Cycles 6 Periods 1.04 WT

This is a course rich in cultural heritage incorporating selections from Pliny, Ovid, Caesar, and/or Cicero. Grammar and vocabulary are developed only as aids to proficiency. Poetry from classic Golden Age authors such as Catullus, Horace, or Ovid may also be added as supplementary material. ***It is recommended that the student earn an 80% or higher average in Latin II to take this course.***

62086 Advanced Placement Latin (NCAA Approved) *

1.0 Credit 30 Cycles 6 Periods 1.08 WT

The AP Latin course focuses on the in-depth study of selections from one of the greatest works in Latin literature: Vergil's *Aeneid*. The course requires students to prepare and translate the readings and place these texts in a meaningful context, which helps develop critical, historical, and literary sensitivities. Throughout the course, students consider themes in the context of ancient literature and bring these works to life through classroom discussions, debates, and presentations. Additional English readings from the entire work help place the Latin reading in a significant context. Students are encouraged to take the Advanced Placement Test which is offered each Spring. Satisfactory Advanced Placement Test scores may result in college credit or placement. ***It is recommended that the student earn an 80% or higher average in Latin II or Latin III to take this course. CHS-Pitt course option may be available. (2024-25)***

62087 Honors Latin (NCAA Approved) *

1.0 Credit 30 Cycles 6 Periods 1.08WT

The Honors Latin course focuses on the in-depth study of selections from one of the greatest work in Latin literature: Caesar's *Gallic War*. *The course requires students to prepare and translate the readings and place these texts in a meaningful context, which helps develop critical, historical, and literary sensitivities. Throughout the course, students consider themes in the context of ancient literature and bring these works to life through classroom discussions, debates, and presentations. Additional English readings from the entire work help place the Latin readings in a significant context.* Students are encouraged to take the Advanced Placement Test which is offered each Spring. Satisfactory Advanced Placement Test scores may result in college credit or placement. ***It is recommended that the student earn an 80% or higher average in Latin II or Latin III to take this course. CHS-Pitt course option may be available. (2025-2026)***

*** Advanced Placement Latin and Honors Latin will be offered alternate years.**

62119 French I (NCAA Approved)**1.0 Credit 30 Cycles 6 Periods 1.0 WT**

Students learn fundamental structures, basic vocabulary, and pronunciation. Upon completion of this course they will be able to speak in simple sentences, understand short conversations, read elementary passages, and write simple sentences. They will also be able to identify some cultural contrasts and values.

62129 French II (NCAA Approved)**1.0 Credit 30 Cycles 6 Periods 1.0 WT**

A continuation of French I, this course emphasizes a growing number of grammatical structures and vocabulary with continued focus on cultural contrasts and values. ***It is recommended that the student earn an 80% or higher in French I to take this course.***

62138 French III (NCAA Approved)**1.0 Credit 30 Cycles 6 Periods 1.04 WT**

More complex grammatical structures and vocabulary are introduced and used to reinforce and expand the students' ability to converse and write in French. Students compose short dialogues and compositions and continue their study of the francophone world. ***It is recommended that the student earn an 80% or higher in French II to take this course.***

62187 Advanced Placement French (NCAA Approved)**1.0 Credit 30 Cycles 6 Periods 1.08 WT**

An advanced course to develop expanded vocabulary and grammar techniques through comprehension and focus on self-expression. Units revolve around the six prescribed AP themes: Personal & Public Identity, Families & Communities, Contemporary Life, Global Challenges, Science & Technology, and Beauty & Aesthetics. Emphasis is on processing authentic French written and audio/visual materials and effectively communicating ideas both orally and in writing in the target language. Students are encouraged to take the AP Exam which is offered each Spring. Satisfactory Advanced Placement Test scores may result in college credit or placement. ***It is recommended that the student earn an 80% or higher in French III to take this course. CHS-Pitt course option may be available.***

62219 Spanish I (NCAA Approved)**1.0 Credit 30 Cycles 6 Periods 1.0 WT**

This course is an introduction to Spanish, emphasizing listening and speaking skills and using vocabulary necessary to express daily needs and activities. Students will explore the diversity of Spanish culture.

62229 Spanish II (NCAA Approved)**1.0 Credit 30 Cycles 6 Periods 1.0 WT**

The second level is an ongoing development of listening, speaking, reading, and writing skills begun in Spanish I. Students will continue to explore the traditions and customs of the Hispanic world. ***It is recommended that the student earn an 80% or higher average in Spanish I to take this course.***

62238 Spanish III (NCAA Approved)**1.0 Credit 30 Cycles 6 Periods 1.04 WT**

Language proficiency is emphasized in listening and speaking through re-entry and expansion of vocabulary, verbal expressions and refining of grammatical structures from previous levels. More complex grammatical structures will be introduced and reinforced by use in conversation. Reading and speaking skills will be developed through the discussion of simple but authentic selections from Hispanic literature. ***It is recommended that the student earn an 80% or higher average in Spanish II to take this course.***

62287 Advanced Placement Spanish (NCAA Approved)**1.0 Credit 30 Cycles 6 Periods 1.08 WT**

Improvement of self-expression and oral comprehension is enhanced through the study of expanded vocabulary and grammatical structures. Oral presentations and conversations supplemented by audio and video recordings are used to explore customs and traditions presented in authentic writings by noted Hispanic authors. Students are encouraged to take the AP Exam which is offered each Spring. Satisfactory Advanced Placement Test scores may result in college credit or placement. ***It is recommended that the student earn an 80% or higher average in Spanish III to take this course. CHS-Pitt course option may be available.***

62319 German I (NCAA Approved)**1.0 Credit 30 Cycles 6 Periods 1.0 WT**

Students begin to develop proficiency in listening, speaking, reading, and writing. Grammar supporting these four communication skills is emphasized. Culture as a reflection of the language is stressed.

62329 German II (NCAA Approved)**1.0 Credit 30 Cycles 6 Periods 1.0 WT**

Vocabulary and grammar are presented to support the continued instruction of listening, speaking, reading, and writing. Culture and language are expanded using the target language by teacher and student to reinforce student comprehension. ***It is recommended that the student earn an 80% or higher average in German I to take this course.***

62338 German III (NCAA Approved)**1.0 Credit 30 Cycles 6 Periods 1.04 WT**

Language skills are further expanded. Students' ability to communicate with accuracy and confidence is supplemented by activities and oral presentations. ***It is recommended that the student earn an 80% or higher average in German II to take this course.***

62387 Advanced Placement German (NCAA Approved)**1.0 Credit 30 Cycles 6 Periods 1.08 WT**

An advanced course to develop expanded vocabulary and grammar techniques through comprehension and focus on self-expression. Units revolve around the six prescribed AP themes: Personal & Public Identity, Families & Communities, Contemporary Life, Global Challenges, Science & Technology, and Beauty & Aesthetics. Emphasis is on processing authentic German written and audio/visual materials and effectively communicating ideas both orally and in writing in the target language. Students are encouraged to take the AP Exam which is offered each Spring. Satisfactory Advanced Placement Test scores may result in college credit or placement. ***It is recommended that the student earn an 80% or higher average in German III to take this course. CHS-Pitt course option may be available.***

FINE AND PRACTICAL ARTS DEPARTMENTS

TECHNOLOGY EDUCATION

56102 Exploring Engineering & Manufacturing

0.5 Credit 15 Cycles 6 Periods 1.0 WT

This course is designed to introduce students to the Central Dauphin School District's Technology Education program. Students are given a glimpse into the variety of courses offered at the high school in the areas of engineering, technical and digital design, animation, architecture, robotics, and manufacturing. Technological evolution, digital design, material fabrication, and engineering problem solving concepts will be covered. This course will help students decide which future classes will help them reach their career and personal goals.

56159 Exploring Multimedia

0.5 Credit 15 Cycles 6 Periods 1.0 WT

This course is designed to introduce students to the Central Dauphin School District's multimedia program. Students are given a glimpse into the variety of courses offered at the high school in the areas of digital graphics, promotional graphics, games design and animation, and TV studio. Graphic design, advertising video, and animation will be covered. This half-year course will help students decide which future classes will help them reach their career and personal goals.

56119 Digital Graphics

1.0 Credit 30 Cycles 6 Periods 1.0 WT

Digital Graphics play a key role in the appearance of almost all print and on-screen designs. In this course, students will learn about packaging design, digital graphics, animation, information design, interactive media, and applying Adobe software. This project-based course will challenge students with creative thinking and real-world problem-solving activities.

56129 Promotional Graphics

1.0 Credit 30 Cycles 6 Periods 1.0 WT

The average American is exposed to 300-700 advertisements per day. Promotional graphics are everywhere, and our world needs creative individuals to design, develop, create, and evaluate these advertisements. In this course students will learn about advertising, graphics, print and digital media, animation, brand identity design, and applying Adobe software. This project-based course will challenge students with creative thinking and real-world problem-solving activities. *This course is available to Sophomores, Juniors, and Seniors only.*

56319 Video Production I

1.0 Credit 30 Cycles 6 Periods 1.0 WT

RECOMMENDED: *Completion of one of the following classes: 56119, 56129 or 56159*

Each day millions of people watch videos on their televisions, computer screens, or phones. Audio and video technologies have become an integral part of our daily life. In this course, students will learn about audio and video productions, promotional media design, digital media, and digital storytelling. This project-based course will challenge students with creative thinking and real-world problem-solving activities. *This course is available to Juniors, and Seniors only.*

56229 Video Production II

1.0 Credit 30 Cycles 6 Periods 1.0 WT

PREREQUISITE: *Video Production I*

Students enrolled in TV Studio 2 will be challenged with various communication and problem-solving activities, independent studies and special projects for the school and community. Students will communicate daily news by creating audio and video productions, special features, graphics, and web content. Students will work throughout the year, continuously solving one digital media problem after another. TV Studio crew members must be able to attend various after school events. *This course is available to Seniors only.*

56158 Technical and Architectural Design**1.0 Credit 30 Cycles 6 Periods 1.0 WT**

Everything that we build, or manufacture requires accurate and precise technical drawings. In this course, students will design, sketch, and make technical drawings, illustrations, models, or prototypes of real-world design problems using the professional Computer-Aided Drafting and Design (CADD) programs. In addition, students will explore traditional and contemporary trends in architecture. This course is especially recommended for future engineering, construction, and architecture students. *This course is available to Sophomores, Juniors, and Seniors only.*

56320 Engineering & Design**1.0 Credit 30 Cycles 6 Periods 1.0 WT**

This course will inform the college bound engineering major of the industrial and technical methods and procedures used in engineering today. A study of the basic knowledge of math, science, drafting, and engineering fields will be explored on a fundamental level. This course is designed to provide an overview of all engineering fields that are available to the prospective student. Students will participate in hands-on problem-solving activities to demonstrate their engineering skills. Students may be required to pay for some of their materials for their projects. *This course is available to Sophomores, Juniors, and Seniors only.*

56327 Product Design & Manufacturing**1.0 Credit 30 Cycles 6 Periods 1.0 WT**

This course is a continuation of Engineering I. Students will expand their problem-solving skill set by completing an array of challenging tasks. Students will create products as they learn to apply principles of design. Manufacturing technology, materials technology, electronics, and transportation technology will be covered. Engineering and technical careers will be discussed. Students may be required to pay for some of the materials for their projects. *This course is available to Sophomores, Juniors, and Seniors only.*

56338 Advanced Materials & Design**1.0 Credit 30 Cycles 6 Periods 1.0 WT****PREREQUISITE:** *Engineering & Design OR Product Design & Manufacturing*

This course is a continuation of Engineering II with an increased emphasis on independent design, research, and problem solving. S.T.E.M. (Science, Technology, Engineering, and Mathematics) Education topics such as transportation, power generation, electricity, electronics, materials fabrication, architectural design, mechanical design, and other technologies may be explored. Individual study via independently developed research topics will lead to in-depth problem-solving skills in specialized areas. Students must purchase all materials needed to complete projects associated with this course. *This course is available to Juniors and Seniors only.*

56409 Robotics & Electronics**1.0 Credit 30 Cycles 6 Periods 1.0 WT**

Robotics and automation are changing the way we live and work. Traditional robots, 3D printers, laser engravers, and self-driving cars are all examples of computer robotic control devices. Students will learn how industry is adopting 3D computer modeling and robotics to test and develop new products. Participants will create the designs they envision on 3D printers and other CNC machines in class. Robotic systems will be examined by developing programs and constructing robotic models to solve various challenges. This class is developed for students planning to enter a technical or engineering career or those that just like computers and have an interest in 'How do they do it?' *This course is available to Sophomores, Juniors, and Seniors only.*

56488 Drones & Transportation**1.0 Credit 30 Cycles 6 Periods 1.0 WT**

Drones represent cutting edge technology that has become a major factor in a large variety of global industries. This class teaches students the skills and knowledge to maintain, operate and successfully utilize the power of drone technology and the theory of flight. Participation in this course will also prepare students to take the FAA Par 107 UAS Certification, Remote Airman's Certificate that is required for commercial use (certification is optional and not provided with the course). *This course is available to Sophomores, Juniors, and Seniors only.*

56808 3D Modeling, Animation & Game Design**1.0 Credit 30 Cycles 6 Periods 1.0 WT**

Creating computer games can often be more enjoyable and challenging than actually playing the games. Game Design & 3D Animation will teach participants how ideas, market analysis, technology, and artwork come together to make the games seen on the web and in stores. Complex games can be built with or without computer programming skills. Students will also learn how 3D modeling and animation are used in games, movies, and advertisements. Multi-media portfolios displaying student work will be developed that could be used to showcase the learning experience for future college or employment placement. This class is designed for students considering careers in the electronic arts, technology, or the computer sciences. *This course is available to Sophomores, Juniors, and Seniors only.*

BUSINESS EDUCATION

57039 Introduction to Web Design

0.5 Credit 15 Cycles 6 Periods 1.0 WT

This course introduces students to basic web design using HTML (Hypertext Markup Language) and CSS (Cascading Style Sheets). Students will be introduced to planning and designing effective web pages; layout techniques, text formatting, graphics, images, and multimedia; and producing a functional, multi-page website. Students will be introduced to JavaScript and how the language can be used to turn static HTML pages into dynamic, interactive webpages. *(Recommended for 9th grade students)*

57788 Web Site Design and Development

1.0 Credit 30 Cycles 6 Periods 1.08 WT

The purpose of this course is to provide a basic understanding of the methods and techniques of developing a simple to moderately complex website using the standard web page language of XHTML, Dreamweaver or comparable, and JavaScript. Students will also learn website design and layout techniques as well as basic search engine analysis. *CHS-Pitt course option may be available.*

57688 Introduction to Computer Programming Python

1.0 Credit 30 Cycles 6 Periods 1.08 WT

This course is designed to teach students with no programming experience how to analyze and solve problems using the Python programming language. The course begins with an overview of the inner working of modern computers to illustrate to the students that computers, while quite intricate, are merely machines. The rest of the course will focus on helping the students learn to use these machines as problem solving tools using Python. *CHS-Pitt course option may be available.*

57489 Advanced Placement Computer Science A (NCAA Approved)

1.0 Credit 30 Cycles 6 Periods 1.08 WT

The AP Computer Science course introduces students to computer science with fundamental topics that include problem solving, design strategies and methodologies, organization of data (data structures), approaches to processing data (algorithms), analysis of potential solutions, and the ethical and social implications of computing. This course emphasizes both object-oriented programming and imperative problem-solving and design using the Java programming language. Students are encouraged to take the Advanced Placement Exam that is offered each Spring. Satisfactory Advanced Placement Test scores may result in college credit or placement. *AP Computer Science A may count as a 4th math credit for Seniors. CHS-Pitt course option may be available.*

57609 Programming with C++

1.0 Credit 30 Cycles 6 Periods 1.0 WT

C++ is a popular language for performance-critical applications that rely on speed and efficient memory management. It is used in a wide range of industries including game development, VR, robotics, and scientific computing. In this class students will learn the fundamental concepts of C++ including decision structures, loops, and pointers. *This course is available to Sophomores, Juniors, and Seniors only.*

57608 Cybersecurity

1.0 Credit 30 Cycles 6 Periods 1.08 WT

The Cybersecurity class will allow students to gain an understanding of and detect security threats and vulnerabilities while ensuring confidentiality, integrity, and availability of computer systems. Student will also get a foundation in fundamental cryptography and learn how to handle security issues within operating systems and databases as well as cloud systems. *CHS-Pitt course option may be available.*

57028 Business Computer Applications**1.0 Credit 30 Cycles 6 Periods 1.0 WT**

This course will provide intermediate level skills in computer applications. Students will be using various integrated software packages and the internet to further explore and produce documents that will attain them marketable employment skills and prepare them for college. *It is recommended that students be able to type at least 40 wpm before taking this course.*

57606 Advanced Computer Concepts**1.0 Credit 30 Cycles 6 Periods 1.0 WT****PREREQUISITE:** *Business Computer Applications*

This is an advanced level computer course designed to further develop and enhance a students' knowledge of various application software. Applications will be spreadsheet, database, desktop publishing, multimedia and photo editing software including Adobe Photoshop. Students will have the opportunity to choose project categories for competitions, including a computer fair, as well as work toward becoming Microsoft certified. Some of the course work includes group projects, presentations, digital movies, and web quests.

57061 Financial Literacy**0.5 Credit 15 Cycles 6 Periods 1.0 WT**

Financial Literacy is designed to teach students how to become financially literate adults. The course includes topics that prepare students for financial decision making, goal setting, saving, budgeting, borrowing, spending wisely, and managing credit. Online option available. *Financial Literacy may count as a math credit.*

57058 Personal Finance and Investing**1.0 Credit 30 Cycles 6 Periods 1.0 WT**

This course is designed to provide students with a solid foundation in personal finance. Financial practices that students will use through their entire life such as banking, budgeting, credit, taxes, insurance, stocks, and investment practices are among the topics that will be explored. The students will also be exposed to the topics of economics, market persuasion, and management. *This course is available to Seniors only and may count as a 4th math credit.*

57518 Accounting I**1.0 Credit 30 Cycles 6 Periods 1.0 WT**

This course offers the students basic skill and knowledge in accounting. Students will learn accounting procedures for both service and merchandising businesses. They will learn to record entries in journals, post to ledgers, complete a worksheet, journalize and post adjusting and closing entries, and prepare financial statements for sole proprietorships and partnerships. Students will complete accounting work both manually and with computers. *Accounting I may count as a 4th math credit for Seniors.*

57526 Accounting II**1.0 Credit 30 Cycles 6 Periods 1.0 WT****PREREQUISITE:** *Accounting I*

This course is designed for those students who have successfully completed Accounting I and wish to pursue an Accounting career or incorporate this skill into their professions. Students will use computers to prepare the work for sole proprietorships and partnerships, and corporations of departmentalized merchandising businesses. Students will learn advanced accounting concepts dealing with depreciation, amortization, investment accounting, stocks, and bonds, etc. The Accounting II students will learn to utilize accounting software packages. They will also concentrate on management concepts that are based on their financial knowledge and observation. *Accounting II may count as a 4th math credit for Seniors.*

57206 Business Law (NCAA Approved)**1.0 Credit 30 Cycles 6 Periods 1.0 WT**

This course provides knowledge of the law in a wide variety of areas. All levels of government, the role of the courts, the constitution, administrative agencies, and law enforcement are emphasized. Key areas of study include consumer protection law, family law including wills, juvenile and school law, contracts, warranties, landlord/tenant law, employment law, and insurance, criminal and civil procedures. The course offers a variety of topics, discussions, and activities including a mock trial, oral presentations, research projects, role playing, and group interaction. *This course is recommended for Juniors and Seniors only.*

57906 Sports and Entertainment Marketing**1.0 Credit 30 Cycles 6 Periods 1.0 WT**

Sports and Entertainment is one of the most exciting and competitive businesses in the world today and the success of a company hinges on how effectively it markets its products or services. This course introduces students to the skills necessary to be a successful marketer in our global economy using events and situation in the areas of sports and entertainment. The course will combine textbook, computer simulations, and internet navigation to educate the students in the functions of marketing, concepts of leadership, finance, human resources, ethical and legal issues, product management, and customer relations. The students will apply creative and high-level thinking to real world business situations. *This course is available to Sophomores, Juniors, and Seniors only.*

ART EDUCATION

59051 Explorations in Art

0.5 Credit 15 Cycles 6 Periods 1.0 WT

This exploratory course is designed for students who are interested in experiencing a variety of artistic possibilities. Students will gain self-awareness through artistic discovery.

59119 Drawing and Painting I

1.0 Credit 30 Cycles 6 Periods 1.0 WT

The students will manipulate the principles and elements of art while developing technical skill with various tools and media. Thinking processes and individual growth are encouraged.

59128 Drawing and Painting II

1.0 Credit 30 Cycles 6 Periods 1.0 WT

PREREQUISITE: *Drawing and Painting I*

This course strives to provide the student with a basis for abstract thinking and problem solving, regardless of subject matter or content.

59136 Drawing and Painting III, Advanced Portfolio Development (second year students)

1.0 Credit 30 Cycles 6 Periods 1.0 WT

PREREQUISITE: *Drawing and Painting II*

This course encourages creative growth and discourages dependence on preconceived ideas. Students will apply their knowledge to new concepts and materials and be encouraged to take risks to work beyond previous levels of success. The development of a portfolio is required.

59137 Drawing and Painting III, Advanced Portfolio Development (second year students)

2.0 Credit 30 Cycles 12 Periods 1.0 WT

PREREQUISITE: *Drawing and Painting II*

This course encourages creative growth and discourages dependence on preconceived ideas. Students will apply their knowledge to new concepts and materials and be encouraged to take risks to work beyond previous levels of success. The development of a portfolio is required.

59219 Three-Dimensional Art I

1.0 Credit 30 Cycles 6 Periods 1.0 WT

Students will learn to manipulate the fundamental elements and principles of design through modeling, assembling, carving, and casting. Using a variety of tools and media (such as clay, plaster, wood, etc.) students will construct three dimensional objects.

59228 Three-Dimensional Art II

1.0 Credit 30 Cycles 6 Periods 1.0 WT

PREREQUISITE: *Three-Dimensional Art I*

This course is a continuation of Three-Dimensional Art I.

59236 Three-Dimensional Art III

1.0 Credit 30 Cycles 6 Periods 1.0 WT

PREREQUISITE: *Three-Dimensional Art II*

The focus of this program is the creative process with an individualized concentration opportunity. Creative growth and problem solving will be encouraged in the development of ideas and projects. Students will apply their knowledge to new concepts and materials and be encouraged to take risks to work beyond previous levels of success.

59316 Photography I**1.0 Credit 30 Cycles 6 Periods 1.0 WT****PREREQUISITE:** *Drawing and Painting I*

This is an introductory course focusing on the principles and techniques of camera use, film development, printing, and presentation. Investigation of visual criteria is stressed as an integral part of the photographic process. A 35mm camera is required. (Automatic or SLR is acceptable.) *This course is available to Juniors and Seniors only.*

59327 Photography II**1.0 Credit 30 Cycles 6 Periods 1.0 WT****PREREQUISITE:** *Photography I*

This is a course designed for students who have completed and excelled in the Introduction to Photography I course. In addition to building on the principles and techniques learned previously, students will explore a variety of photographic formats, concepts, and ideas. Focus will be placed on individual ideas, personal creative growth, and series development. The development of a portfolio is required.

59407 Advanced Portfolio Development**2.0 Credit 30 Cycles 12 Periods 1.0 WT**

The focus of the program is the creative process. Visual art, music, writing, drama, dance, and video production will be included in the curriculum. Projects and class activities will encompass all disciplines with an individualized concentration opportunity. This course is for students interested in developing an awareness of the relationship of the creative process to society, culture, and self, as well as for those desiring a career in the fine arts. Required activities may extend beyond the school day. Interested students should make arrangements through the Art Department. *This course is available to Seniors only.*

59121 Ceramics**2.0 Credit 30 Cycles 12 Periods 1.0 WT****PREREQUISITE:** *Three-Dimensional Art I*

This is an elective course available to students who have successfully completed Three-Dimensional Art I and are interested in further development of their skill with clay. Complex ceramic forms, techniques and vocabulary will be taught while students work more independently towards individual goals in clay.

59402 Visual Journaling**0.5 Credit 15 Cycles 6 Periods 1.0 WT**

Students will explore the use of a journal in diverse ways that combine both writing and visual information to solve a variety of complex, creative problems that challenge the student and the connection to their place in the world. Journal – A tool that holds the documentation and collections of the journey taken in the creative thought process.

59403 Visual Journaling II**0.5 Credit 15 Cycles 6 Periods 1.0 WT****PREREQUISITE:** *Visual Journaling*

Take your visual journaling knowledge and skills to deeper levels in this dynamic class that allows you to continue your academic, artistic, and personal growth journey. You will continue to explore the use of a journal as well as other artistic processes in diverse ways that combine both writing AND visual information to solve a variety of complex creative problems that challenge you and the connection to your place in the world.

MUSIC DEPARTMENT

CLASSROOM COURSES

63001 Introduction to Music Technology

0.5 Credit 15 Cycles 6 Periods 1.0 WT

This course is designed to familiarize the student with the current uses of computers, music hardware and software associated with the music industry. Students will explore a variety of musical concepts that include theory, history, culture, composition, and performance. This is a hand-on, project-based course that requires creativity and basic computer skills. Students are required to provide their own wired headphones and a minimum 4GB flash drive for classroom use. This course is available to Freshmen and Sophomores.

63118 Music Theory I

1.0 Credit 30 Cycles 6 Periods 1.0 WT

Students must also be concurrently enrolled in an ensemble.

Music Theory I is designed for students who desire an in-depth study of the theory and structure of music. Basic theory, ear training, conducting, composition and music history comprise the course. Each student will be required to complete harmony exercises and theory tests. Students are further expected to participate in class discussions of music past and present. It is preferable to have a musical background to succeed in this course. It is desirable to take this course in the Sophomore or Junior year to allow for the advanced level.

63187 Advanced Placement Music Theory

1.0 Credit 30 Cycles 6 Periods 1.08 WT

PREREQUISITE: *Music Theory I*

This course is a continuation and more in-depth study of the material presented in Music Theory I. Advanced theory, ear training, sight singing, conducting, and composition comprise the curriculum. Requirements may include a major composition, a performance project, and a research project. Students are encouraged to take the AP exam that is offered each Spring. Satisfactory Advanced Placement Test scores may result in college credit or placement.

63188 Recording & Sound

0.5 Credit 15 Cycles 6 Periods 1.0 WT

PREREQUISITE: *Successful completion of any music elective course. Intro to Music Technology highly suggested.*

This course is designed to familiarize the student with the current uses of computers, synthesizers, recording hardware and software associated with the contemporary music industry and Live Sound Reinforcement while developing a foundation of music theory and musicianship. Students will explore the concepts of sound design, amplification, arranging and producing while keeping a focus on current trends and issues that the music production industry is facing today. It is important to note that this is an extremely hands-on class that is project based. Students are required to provide their own wired headphones and a minimum 4GB flash drive for classroom use. This course does require extra work time in addition to the daily scheduled class period. This course is available to Juniors and Seniors.

63218 Music Keyboard I

0.5 Credit 15 Cycles 6 Periods 1.0 WT

This is a course for beginners or for students who have studied piano previously and wish to continue their study of keyboard technique. The student will learn simple song-type material using varied left-hand accompaniment patterns. Skill in reading music notation is emphasized. Class members will practice and progress at their own speed during the daily sessions. It is not necessary to have a piano at home or a background in music to succeed in this course.

63226 Music Keyboard II**0.5 Credit 15 Cycles 6 Periods 1.0 WT****PREREQUISITE:** *Music Keyboard I*

This course is a continuation and more in-depth study of material presented in Music Keyboard I. Class members will practice and progress at their own speed during the daily sessions.

63318 Guitar I**0.5 Credit 15 Cycles 6 Periods 1.0 WT**

This is a course for beginners or for students who have studied previously and wish to continue their study of guitar in a group setting. The students will learn folksong-type material using varied melodic style as well as modern chording styles and songs. Activities are geared toward learning chord notation, staff notation, TAB, chord patterns and strumming rhythms. Practicing is done during class sessions on instruments provided by the school. The student can expect to become a moderately good player.

63326 Guitar II**0.5 Credit 15 Cycles 6 Periods 1.0 WT****PREREQUISITE:** *Guitar I or permission of instructor*

This course is a continuation and more in-depth study of material presented in Guitar I. Concepts studied include use of barre chords, scale patterns, transposition, extended positions, two-voice melodies, and small ensemble work. Activities are geared to increasing knowledge and proficiency in guitar playing, modern techniques, and musical score reading. Class members will practice independently and in small groups with guidance from the instructor.

MUSIC PERFORMANCE COURSES

Students may choose to be in multiple music ensembles (Choir, Band, Orchestra, and Jazz Band). Students interested in multiple ensembles should contact the appropriate directors for assistance. Credit will be based on the number of periods the student is in each ensemble per cycle.

Attention Choir Students: Sign up for Choir (9-12) 64008. You will then be placed into one of the choir sections based on school grade or audition results. The following descriptions are for reference only.

64009 Men's Chorale**1.0 Credit 30 Cycles 6 Periods 1.0 WT**

The Men's Chorale is an all-male ensemble providing a unique opportunity to foster strong vocal performance through men-specific repertoire. Students in Men's Chorale learn a wide variety of repertoire ranging from a cappella Renaissance to accompanied 20th century scores. Members of the ensemble learn basic note reading, solfege-hand sign skills, rhythm identification, vowel production technique, music theory elements, and foreign language pronunciation skills. Attendance at all concerts and rehearsals is mandatory. Men's Chorale is a non-auditioned vocal ensemble open to all freshman, sophomore, junior, and senior men.

64031 Women's Chorale**1.0 Credit 30 Cycles 6 Periods 1.0 WT**

Women's Chorale is a SSAA Women's Choir at Central Dauphin High School. The ladies of Women's Chorale learn challenging traditional and contemporary choral compositions spanning all compositional time periods. Women's Chorale members learn music notation, solfege-hand sign skills, rhythm identification, vowel production techniques, music theory elements, and foreign language pronunciation skills. Attendance at all concerts and rehearsals is mandatory. Women's Chorale is a non-auditioned ensemble, open to all freshman, sophomore, junior and senior women.

64028 CD Chanson**1.0 Credit 30 Cycles 6 Periods 1.0 WT**

CD Chanson is the premier SSAA Women's Choir at Central Dauphin High School. The ladies of CD Chanson learn challenging traditional and contemporary choral compositions, spanning all compositional time periods. CD Chanson members learn advanced notation comprehension, score analysis, advanced solfege-hand sign command, rhythmic identification, advanced music theory elements, and foreign language pronunciation skills. Attendance at all concerts and rehearsals is mandatory. CD Chanson is an auditioned ensemble open to sophomore, junior, and senior women.

64038 CD Singers**1.0 Credit 30 Cycles 6 Periods 1.0 WT**

The CD Singers serve as the premier SATB vocal ensemble at Central Dauphin High School. The CD Singers learn challenging traditional and contemporary choral compositions spanning all compositional time periods. Members of CD Singers are expected to give intensive energy during and outside of the rehearsal setting. Daily practice of the repertoire is mandatory. This ensemble develops the highest level of vocal education, musicianship, and artistry. All members can be relied on as leaders, musically and personally. Members of CD Singers learn advanced notation comprehension, score analysis, advanced solfege-hand command rhythmic identification, advanced music theory elements, and foreign language pronunciation skills. Attendance at all concerts and rehearsals is mandatory. This ensemble is an auditioned ensemble open to sophomore, junior, and senior women and men.

64045 Vocal Technique**0.5 Credit 15 Cycles 6 Periods 1.0 WT**

Students will expand upon basic knowledge of the voice gained in a large group choir setting. In addition, students will gain advanced knowledge of the vocal mechanism. Specific detail will be given to individual solo singing and the difference in tone quality between a choral sound and a solo singing sound. Students will further their knowledge of breath support, vowel shaping, voice placement and diction when singing. Musicality will be addressed in terms of phrasing, dynamics, and articulation. Students will explore a variety of different solo musical styles including folk song, Italian aria, German lieder, and Broadway show tunes. Students will also take part in regular solo performances, preparing music that is consistent with collegiate level voice training. This course is open to sophomore, junior and senior students. *To qualify for this course the student must also be a current member of either Women's Chorale, Men's Chorale, CD Chanson, CD Singers or have instructor approval.*

All orchestra members (string players) should sign up for 64400 and entry into the specific ensemble will be determined based on school grade or after auditions at the end of the previous school year. The following descriptions are for reference only.

64300 Orchestra 9 (9th grade only)**1.0 Credit 30 Cycles 6 Periods 1.0 WT**

Enrollment in Orchestra 9 is open to freshmen who play orchestral string instruments and who are interested in the study of orchestra literature for concerts, festivals, and community performances. *Wind / Percussion players are selected from the band program by audition and/or recommendation by the high school band director.* Rehearsal techniques, technical competency, tone production, balance, intonation, musical phrasing, and standard repertoire comprise the curriculum. Applied theory, music history, and musical terms are also taught. Attendance at all concerts and rehearsals is mandatory.

64309 Concert Orchestra (10-12)**1.0 Credit 30 Cycles 6 Periods 1.0 WT**

Enrollment in the Concert Orchestra is open to students who play orchestral string instruments and who are interested in the study of orchestra literature for concerts, festivals, and community performances. *Wind / Percussion players are selected from the band program by audition and/or recommendation by the high school band director.* Rehearsal techniques, technical competency, tone production, balance, intonation, musical phrasing, and standard repertoire comprise the curriculum. Applied theory, music history, and musical terms are also taught. Attendance at all concerts and rehearsals is mandatory.

64408 Symphonic Orchestra (10-12)**1.0 Credit 30 Cycles 6 Periods 1.0 WT**

Enrollment in the Symphonic Orchestra is open to students who play orchestral string instruments and who are interested in an intensive study of orchestra and ensemble literature for concerts, festivals, and community performances. Entry into the ensemble is attained through an audition in the preceding year. *Wind / Percussion players are selected from the band program by audition and/or recommendation by the high school band director.* An advanced understanding of rehearsal techniques, technical competency, tone production, balance, intonation, musical phrasing, and standard repertoire comprise the curriculum. Applied theory, music history, and musical terms are also taught. Attendance at all concerts and rehearsals is mandatory.

64407 Instrumental Technique: Strings (9-12)**0.5 Credit 15 Cycles 6 Periods 1.0 WT**

Students will expand upon basic knowledge of the violin, viola, cello, or bass gained in a large group orchestral setting. Specific detail will be given to individual solo playing and the difference in tone quality between an orchestral sound and a solo string sound. Student will further their knowledge of vibrato, bow usage and placement, intonation, shifting, and higher positions including thumb position (cello and bass), clef changes, and harmonics. Students will explore a variety of different solo musical styles and take part in regular solo performances in front of their peers. In addition, students will also be using their class time to prepare music for various PMEA and DCMEA festivals and/or college auditions. *To qualify for this course the student must have at least one year's experience of orchestra and be enrolled in a string ensemble at CD High School.*

All non-percussion band members should sign up for 64600 and entry into the specific ensemble will be determined based on school grade or audition at the end of the previous school year. The following descriptions are for reference only.

NOTE: Percussionists should sign up for Percussion Ensemble 64809. The Percussion Ensemble will perform in concert with Band 9 or Symphonic Band.

64500 Concert Band 9**1.0 Credit 30 Cycles 6 Periods 1.0 WT**

Enrollment in Band 9 is open to freshmen who play wind instruments and who are interested in the study of band literature for concerts, festivals, and community performances. Rehearsal techniques, technical competency, tone production, balance, intonation, musical phrasing, and standard repertoire comprise the curriculum. Applied theory, music history, and musical terms are also taught. Attendance at all concerts and rehearsals is mandatory.

64509 Symphonic Band (10-12)**1.0 Credit 30 Cycles 6 Periods 1.0 WT**

Enrollment in Symphonic Band is open to students who play wind instruments and who are interested in the study of band literature for concerts, festivals, and community performances. Rehearsal techniques, technical competency, tone production, balance, intonation, musical phrasing, and standard repertoire comprise the curriculum. Applied theory, music history, and musical terms are also taught. Attendance at all concerts and rehearsals is mandatory.

64608 Wind Ensemble (10-12)**1.0 Credit 30 Cycles 6 Periods 1.0 WT**

Enrollment in the Wind Ensemble is open to students who play wind instruments and who are interested in and intensive study of band literature for concerts, festivals, and community performances. *Entry into the ensemble is attained through an audition in the preceding year.* An advanced understanding of rehearsal techniques, technical competency, tone production, balance, intonation, musical phrasing, and standard repertoire comprise the curriculum. Applied theory, music history, and musical terms are also taught. Attendance at all concerts and rehearsals is mandatory.

64811 Beginning Percussion Ensemble**1.0 Credit 30 Cycles 6 Periods 1.0 WT**

Enrollment in the Freshmen Percussion Ensemble is open to freshmen who play percussion instruments and who are interested in the study of band literature for concerts, festivals, and community performances. An understanding of rehearsal techniques, technical competency, tone production, balance, intonation, musical phrasing, and standard repertoire comprise the curriculum. Applied theory, music history, and musical terms are also taught. There is also specific attention paid to various percussion techniques and idiomatic percussion literature. Attendance at all concerts and rehearsals is mandatory. This ensemble will join with Band 9 for concerts.

64812 Advanced Ensemble**1.0 Credit 30 Cycles 6 Periods 1.0 WT**

Enrollment in the Percussion Ensemble is open to students who play percussion instruments and who are interested in the study of band literature for concerts, festivals, and community performances. An understanding of rehearsal techniques, technical competency, tone production, balance, intonation, musical phrasing, and standard repertoire comprise the curriculum. Applied theory, music history, and musical terms are also taught. There is also specific attention paid to various percussion techniques and idiomatic percussion literature. Attendance at all concerts and rehearsals is mandatory. This ensemble will join with the Symphonic Band and/or Wind Ensemble for concerts.

All students interested in jazz should sign up for 64920 and entry into the specific ensemble will be determined after auditions at the end of the previous school year.

64858 CD Jazz Orchestra (10-12)**1.0 Credit 30 Cycles 6 Periods 1.0 WT**

Jazz Orchestra is open to wind, percussion, guitar, bass, and piano players who are interested in an advanced study of jazz band literature for concerts, festivals, and community performances. These students must also be current members of at least one other CDHS instrumental music ensemble. Entry into the ensemble is attained through an audition in the preceding year or with the director's permission. An understanding of rehearsal techniques, technical competency, tone production, balance, musical phrasing, repertoire, improvisation, and jazz idioms will be covered. Jazz theory, jazz history and musical terms will also be taught. Attendance at all concerts and rehearsals is mandatory.

64922/64931 Big Band (9-12)**1.0 Credit 30 Cycles 6 Periods WT 1.0**

Big Band is open to wind, percussion, guitar, bass, and piano players who are interested in the study of jazz band literature for concerts, festivals, and community performances. These students must also be current members of at least one other CDHS instrumental music ensemble. An understanding of rehearsal techniques, technical competency, tone production, balance, musical phrasing, repertoire, improvisation, and jazz idioms will be covered. Jazz theory, jazz history, and musical terms will also be taught. Attendance at concerts and rehearsals is mandatory. *All students interested in jazz should sign up for 64920 and entry into the specific ensemble will be determined after auditions at the end of the previous school year.*

64606 Instrumental Technique: Winds (9-12)**0.5 Credit 15 Cycles 6 Periods 1.0 WT**

Wind students will expand upon basic knowledge of their respective instrument gained in a large group band setting. Specific detail will be given to individual solo playing and the difference in tone quality between an ensemble sound and a solo sound. Students will further their knowledge of vibrato, breath control, intonation, range expansion, clef changes, and harmonics when playing. Musicality will be addressed in terms of phrasing, dynamics, and articulation. Students will explore a variety of different solo musical styles and take part in regular solo performances in front of their peers. In addition, students will also be using their class time to prepare for PMEA, DCMEA, and college auditions. *To be eligible for this course the student must have taken at least one year of band and be enrolled in a band ensemble at CD High School.*

64709 Marching Band (9-12)**0.5 Credit 15 Cycles 6 Periods 1.0 WT**

Marching band is available to students who play wind instruments, percussionists, and those interested in the color guard. Appearances are scheduled at school-related events such as football games and pep rallies. Additional scheduled activities may also include festivals, competitions, and parades as well as civic occasions. Attendance at all performances and rehearsals is mandatory. Rehearsals are held outside of the school day.

NOTE: Summer rehearsal and Band Camp are mandatory for all marching band members. Band Camp is held in August and students should be available to attend all scheduled sessions. An overview of the summer schedule will be available at the time of course selection.

MUSIC NON-CREDIT INSTRUCTION

Selected Ensembles: Select ensembles may be formed according to interest/available instrumentation or voices. Ensembles may include small homogeneous instrument/vocal ensembles, mixed quartets, or chamber groups. Groups are limited to advanced students, giving them the opportunity to perform a variety of styles in small ensembles. Ensembles may perform for community and school events outside of the concerts as opportunities arise. Membership is by audition or placement by director. Rehearsals may be held before school or after school.

Instrumental Lesson – Band/Orchestra/Ensemble: As scheduling permits, lessons are taught throughout the school year. They may be offered in groups and their purpose is to encourage development of musicianship, tone production, tuning, bowing, fingering, rhythm, and care of the instrument.

Musical: Musicals are presented each year at both high schools. Opportunities for experience in all areas of musical production (on stage, tech, and behind the scenes) are available to all students. Rehearsals are scheduled after school, in the evening, and weekends.

Pit Orchestra/Band: This ensemble is formed to provide accompaniment for the musical theatre productions. This ensemble meets on a varied schedule. Rehearsals may be scheduled after school, in the evening, and on weekends. Students will be auditioned/appointed by the music director assigned to this position based upon musical achievement and necessary instrumentation.

FAMILY AND CONSUMER SCIENCE DEPARTMENT

58001 Introduction to Family and Consumer Science

0.5 Credit 15 Cycles 6 Periods 1.0 WT

This course is a comprehensive course offered to Freshman students as the foundation for further study within the FCS Department. Students enrolled in this course will study Child Development and Parenting Skills, Family Relationships, Consumerism and Financial Responsibilities, and Food Safety and Sanitation. This course is designed to include hands-on practical experiences that will require collaboration and critical thinking.

58308 Family Dynamics

1.0 Credit 30 Cycles 6 Periods 1.0 WT

Family Dynamics is a project-based course focusing on the role of the family in helping individuals achieve optimal quality of life by addressing concerns of the community and global society. Emphasis is given to dynamics of family life, individual development, life relationships, positive parenting, crisis management, and trends affecting families. Upon completion of the course students will have an understanding of the impact of the family on an individual's ability to succeed in an increasingly complex society. This course provides a foundation for further study for students interested in Education, Health Science, Human Services (Counselor) and Government and Public Administration. Topics discussed include, but are not limited to, The Family Foundation, The Family Life Cycle, Strengthening the Family, and Supporting the Family. *This course is available to Sophomores, Juniors, and Seniors.*

58002 Textiles, Fashion and Apparel

0.5 Credit 15 Cycles 6 Periods 1.0 WT

This course is designed to assist students in using critical thinking skills to make sound decisions related to the selection, use, and care of clothing and textile products in their daily lives. Principles and techniques involved in fundamental clothing construction are analyzed. Directed laboratory experiences provide an opportunity to solve individual problems in garment structure through the application of design principles. Students will integrate technology, textile science, fabric engineering, sustainability, entrepreneurship, and technical reading in their learning.

58209 Adulting 101: Managing Adult Roles and Responsibilities

1.0 Credit 30 Cycles 6 Periods 1.0 WT

Adulting 101 focuses on preparing students for living independently, overcoming adversity, and working successfully with others. Students will learn to manage their personal resources to meet their basic needs for food, clothing, and housing. Students will learn about their personal, legal, and financial responsibilities and develop and apply interpersonal skills to make wise and responsible personal and occupational choices. Students will apply research and inquiry skills while investigating topics related to personal life management. Topics discussed include, but are not limited to, College & Career Readiness, Character Development, Service to Others, Financial & Resource Management, Housing & Interior Design. *This course is available to Sophomores, Juniors, and Seniors.*

58408 Child Development and Parenting

1.0 Credit 30 Cycles 6 Periods 1.0 WT

Child Development and Parenting offers students a background in principles and theories to increase understanding of how humans develop and grow physically, socially, intellectually, emotionally, and morally. In addition, the curriculum emphasizes the responsibilities and challenges of parenting. This course provides a foundation for future study for students interested in a career working with children as an educator, early childhood education provider, medical professional, etc., as well as those students interested in the fields of psychology, sociology, and human development. Topics studied include, but are not limited to, Parenting Roles, Responsibilities and Practices, Ensuring a Healthy Start for Mother and Child, and Developmental Theories from Conception to Age five. *This course is available to Sophomores, Juniors, and Seniors.*

58003 Early Childhood Education**1.0 Credit 30 Cycles 6 Periods 1.0 WT****PREREQUISITE:** *Child Development and Parenting*

Students in Early Childhood Education will develop, demonstrate, and guide the physical, cognitive, creative, and social/emotional development activities for children from infant to school age. Students will acquire competence in the areas of childhood development theories, literacy, and classroom management. They will apply their knowledge of program elements needed to create a successful developmentally appropriate curriculum and environment including planning nutritious snacks, preparing interactive bulletin boards, and researching current trends and issues in the field of early childhood education. The students will acquire competence in developing and teaching activities for young children. The curriculum will address professionalism, community needs and resources, career opportunities, interpersonal skills, communication, leadership, and organizational skills.

58108 Foods and Nutrition**1.0 Credit 30 Cycles 6 Periods 1.0 WT**

In this course students will use principles of nutrition to ensure a healthy body throughout the life cycle. An emphasis will be placed on planning and preparing meals with an understanding of nutrients and their benefits, portion control and dietary needs. Culinary lab experiences will allow students to apply fundamental culinary techniques. These techniques include knife handling skills, the recognition, selection, and proper use of tools and equipment and various cooking methods. Topics discussed in Foods and Nutrition include, but are not limited to, Kitchen Safety and Sanitation, Recipe Reading and Proper Measuring Techniques, Baking, Digestion, Essential Nutrients, Global Cuisine, and Food Science. *This course is available to Seniors only.*

HEALTH, PHYSICAL EDUCATION AND SAFETY DEPARTMENT

61102 Physical Education 9-10

0.5 Credit 15 Cycles 6 Periods 1.0 WT

The physical education program stresses involvement in a variety of team-oriented activities such as soccer, basketball, flag football, volleyball, and field hockey. It also includes individual activities such as physical fitness, archery, tennis, and golf. Emphasis will be placed on increasing physical fitness, developing skills, knowledge of rules, and developing attitudes of leadership and fair play.

61106 Physical Education 11-12

0.5 Credit 15 Cycles 6 Periods 1.0 WT

The physical education program stresses co-educational lifetime activities. A variety of team and individual activities include tennis, golf, archery, square dance, volleyball, badminton, and softball. Weight training and physical conditioning are also incorporated into the program. Emphasis will be placed on improving skills, knowledge of rules, strategies, and developing attitudes of leadership and fair play.

61107 Advanced Physical Education

0.5 Credit 15 Cycles 6 Periods 1.0 WT

This course is for highly competitive students. Students will participate in the same activities as regular PE but at a more advanced and highly competitive level. Students must have their current PE teacher's signature to register for this class. *This course is available to Sophomores, Juniors, and Seniors only.*

61111 Group Fitness

0.5 Credit 15 Cycles 6 Periods 1.0 WT

This course is for students that want to participate in high intensity group exercise classes. Classes include Tabata, interval training, cross fit, etc. Students must have their current PE teacher's signature to register for this class.

61309 Theory and Application of Strength and Conditioning

0.5 Credit 15 Cycles 6 Periods 1.0 WT

This course is designed for the student who wants to learn the theory behind and application of strength, flexibility, and conditioning. This course is designed for the highly motivated student who desires to increase their knowledge of the principles of fitness and to improve their muscular strength, flexibility, and cardiovascular fitness. *This course is available to Sophomores, Juniors, and Seniors only.*

61706 Personal Fitness I

0.5 Credit Summer, Spring, or Fall offerings 1.0 WT

This course is designed for exceptional students who wish to open up their regular school year schedule to additional AP/Honors or elective courses. The goal of this course is to motivate students to implement health practices and physical activities into their daily routine. This course will be instructed using a combination of personal fitness content lessons and submission of fitness workouts with the use of a fitness tracker (watch, Fitbit, app, etc.) Content topics will include components of fitness, goal setting, principles of training, cardiovascular fitness, muscular fitness, nutrition, consumer issues, and designing your own program. *This course is available to Juniors and Seniors only. Summer courses cover the same content in a shorter timeframe.*

61707 Personal Fitness II

0.5 Credit Summer, Spring, or Fall offerings 1.0 WT

This course will expand on the knowledge gained in Personal Fitness I and has the same fitness log requirements. *This course is available to Seniors only. Summer courses cover the same content in a shorter timeframe.*

61408 Fit for Life**0.5 Credit 15 Cycles 6 Periods 1.0 WT**

This course is designed for students who have a BMI (Body Mass Index) above 85% which indicates they may be at risk of being overweight. This course will promote lowering BMI through fitness activities and sensible nutrition. *Students must have a physical education teacher's signature to enroll in this course.*

61505 Health**0.5 Credit 15 Cycles 6 Periods 1.0 WT**

The main topics of instruction include social, emotional, and mental health, drug/alcohol/tobacco education, human sexuality, wellness, nutrition, and physical fitness. All students are given the opportunity to develop knowledge and skills that will enable them to contribute effectively to their present and future family lives. Health should be scheduled in grade 10. This course may be available online for students who wish to open up their schedule for AP or elective courses.

61606 Red Cross Certified First Aid/CPR Basic Life Support**0.5 Credit 15 Cycles 6 Periods 1.0 WT**

This course is designed for Juniors and Seniors seeking Red Cross certification in both First Aid and CPR. Students interested in becoming babysitters, volunteer firefighters, lifeguards, or nurses will find this course beneficial and, in some cases, required. Class size is limited. Students will receive a certificate of completion at the end of this class. Students desiring official certification must pay the required Red Cross fee.

COOPERATIVE EDUCATION PROGRAM

The cooperative education program is available to senior students who wish to participate in a career-related on-the-job training experience on a daily basis. To be considered for the cooperative related work or related internship experience students must complete an application packet in their junior year, be in good standing with academics, attendance, discipline, and receive positive recommendations from their classroom teachers. A maximum of three (3) elective credits can be earned through either program.

65007 Cooperative Related Work Experience

Students can learn skills necessary to become a successful employee in any career field. Students must obtain work site placements that will enable them to acquire meaningful career related experiences in an atmosphere conducive to learning. All work site placements must be pre-approved by the cooperative education coordinator.

65107 Cooperative Related Internship Experience

College bound students intending to invest large sums of time and money into a specialized field of learning can gain practical experience to help ensure that the investment is a wise one. Students must obtain work site placements that will enable them to acquire meaningful career related experiences in an atmosphere conducive to learning. All work site placements must be pre-approved by the cooperative education coordinator.

ENGLISH AS A SECOND LANGUAGE

90019 English as a Second Language for Newcomer and Beginner ESL Student

1.0 Credit 30 Cycles 6 Periods 1.0 WT

This is a beginning course for English Learners who recently arrived with emphasis on English Language Acquisition in the areas of basic reading, introduction to writing, listening, and speaking. The course is designed for an English Learner who is considered a newcomer or an English Learner who typically received an overall language proficiency score of a Level 1 or Level 2. All students who may be considered an English Learner must take a screener assessment from WIDA to determine placement.

GIFTED DEPARTMENT

Central Dauphin Schools serve the needs of academically talented young people in many ways. Advanced Placement courses are available which prepare students for the Advanced Placement examinations, allowing them to earn possible college credits. Throughout the four years of high school, accelerated and/or AP courses are offered in most subject areas. A student who is eligible as gifted may elect through the GIEP (Gifted Individualized Education Plan) process to design enrichment activities as part of any course selected. The teachers of gifted will then work with the student and classroom teacher to design enriched coursework.

INDIVIDUALIZED EDUCATION PROGRAMS AND SERVICES

Central Dauphin High Schools provide all special education students a Free and Appropriate Public Education. The student's parents serve as team members with the public school staff to determine eligibility for, and provision of, special education services.

It is the responsibility of the Multi-Disciplinary team to recommend to the Individualized Education Program (IEP) team the most appropriate educational considerations in the least restrictive environment. Once a student has been recommended eligible for special education and/or related service, an IEP is developed to determine the extent of services appropriate for that student at the secondary level. This IEP is the basis for all educational programming and instruction for eligible students.

Students may receive support as follows:

- ❖ Learning support
- ❖ Life skills support
- ❖ Multiple disabilities support
- ❖ Emotional support
- ❖ Autistic support
- ❖ Hearing support
- ❖ Vision support
- ❖ Speech and language support
- ❖ Related services
 - Vision services
 - Orientation and mobility
 - Speech and language therapy
 - Occupational therapy
 - Physical therapy
 - Deaf and hard of hearing services
 - Social work services
 - Psychological services

The Special Education Program at Central Dauphin School District's high schools provide academic, behavioral, emotional, and life skills support for special education eligible students and provide a connection between students, parents, and teachers. The support provided is determined by each student's IEP team. The goal of the special education program is to ensure academic and personal success for students with disabilities. Each Special Education student is assigned a Case Manager who is a Special Education Teacher. This Special Education Teacher acts as a resource for the student and parent in all areas of the student's education.

Learning Support

Students who are provided learning support services need specially designed instruction to meet their educational needs. Learning support often enables students to function more effectively in their regular classes. In addition to supporting students perform tasks, within the regular curriculum, specialized curricula such as those in the areas of mathematics and reading are utilized. Such specialized curricula reflect skills indicated in statewide standards.

Supplemental/Full-time Learning Support

The Supplemental/Full-time Learning Support program focuses on providing an individualized program for students who have low incidence disabilities, such as Autism Spectrum Disorder. Curriculum content is fully aligned with the general education curriculum with an emphasis on development and use of appropriate communication, socialization and behavior, sensory integration, academics, leisure activities and community living. Opportunities for students to be enrolled in work experiences and community-based learning is available based on their individual needs.

Emotional Support

Emotional Support is available for students when the Individualized Education Program Team determines that this level of intensive service is the least restrictive environment. Students are offered coursework that is fully aligned with the general education curriculum. Class routines and activities engage the students in meaningful opportunities to grow in affective skills with an emphasis on addressing emotional needs, communication, socialization, and behavior. Opportunities for students to be enrolled in work experiences are available based on their individual needs.

Life Skills Support

Life Skills Support focuses on preparing students with a diagnosis of Intellectual Disabilities to become contributing members of the community. The curriculum addresses basic and functional academics, socialization, communication, motor, leisure activities, and community living. Class routines and daily activities engage students in functional situations whereby they learn to utilize academic skills in an integrated and meaningful manner. Prevocational and vocational training become increasingly emphasized as the student approaches graduation. Instructional outcomes follow Pennsylvania's Alternate System of Assessment and Related Standards. Opportunities are available based upon individual student needs.

Multiple Disabilities Support

Programming for students with multiple disabilities focuses on preparing students to achieve their potential as contributing members of the community. An educational plan is individualized to enable the student to achieve the outcomes required to attain this post-school vision and optimally contribute to the community. The curriculum addresses daily living, self-care, functional academics, communication, motor, socialization, leisure activities, community living, and prevocational and vocational training. Instructional outcomes follow Pennsylvania's Alternate System of Assessment and Related Standards. Class routines and daily activities engage the students in functional activities whereby they learn to utilize skills in an integrated and meaningful manner. The Central Dauphin School District Multiple Disabilities Support (MDS) Program believes that a community is enriched by diversity. Inclusion with regular education is implemented according to the student's learning profile. The Multiple Disabilities Support (MDS) Program works in association with the community agencies such as Mental Health/Intellectual and Developmental Disabilities Agency (MH/DD) and the Office of Vocational Rehabilitation (OVR), to facilitate the students' successful transition into the community.

Autistic Support

Autistic Support programming focuses on preparing students to become contributing members of the community. The curriculum addresses communication, socialization and behavior, sensory integration, pre-academics, academics, leisure activities and community living. Class routines and daily activities engage the students in meaningful applications of the curriculum. Emphasis is placed on integration of students' communication, motor, and sensory skills throughout their daily program, supported by necessary related services. Pre-vocational, vocational and community participation is increasingly emphasized as students approach graduation. Inclusion with regular education is implemented according to the student's learning profile and social-emotional needs. Students will be assessed annually to determine the amount of inclusion. Instructional outcomes follow Pennsylvania's Alternate System of Assessment and Related Standards.

SPECIAL EDUCATION DEPARTMENT

LEARNING SUPPORT

9TH GRADE LEARNING SUPPORT

71111 English I

1.0 Credit 30 Cycles 6 Periods 1.0 WT

This course includes integrated work in grammar, vocabulary, and literature. Emphasis is placed on the four different types of writing required for state assessments which are narrative, expository, creative, and persuasive. An active IEP is required.

72111 Instructional Reading I

1.0 Credit 30 Cycles 6 Periods 1.0 WT

This course is designed for students who require instruction in multi-syllabic words and content specific vocabulary. Placement is based upon instructor approval. An active IEP is required.

74111 Standards-Based Math I

1.0 Credit 30 Cycles 6 Periods 1.0 WT

This course advances a student's understanding and use of basic math skills and includes application of pre-algebra skills. The course follows the Algebra IA and IB curriculum but is presented at a pace and depth that meets the ability of the students. Placement is based upon instructor approval. An active IEP is required.

77371 Interpersonal Skills I

1.0 Credit 30 Cycles 6 Periods 1.0 WT

This course is designed for students with emotional support needs to provide them with a variety of strategies to claim their self-esteem, identify their individual talents, create internal motivation and drive to expand their talents, assume responsibility for themselves and others and interact responsibly with others. An active IEP is required.

78519 Instructional Support

Not credited 30 Cycles periods determined by IEP

This course is designed to meet the students' needs for direct instruction to review skills in reading, written expression, and math. Students have the opportunity to complete assignments with support, receive review and repetition of concepts presented in regular education, receive instruction on editing their written assignments and complete unfinished tests and quizzes. An active IEP is required.

10TH GRADE LEARNING SUPPORT

71213 English II

1.0 Credit 30 Cycles 6 Periods 1.0 WT

This course includes writing activities with emphasis on comparison/contrast composition and persuasive writing composition, which incorporates a thesis and is developed through proper notetaking and research. It is a comprehensive literature course that includes a short story, novel, poetry, and play will be taught with an emphasis on the elements and terminology associated with each. An active IEP is required.

72213 Instructional Reading II

1.0 Credit 30 Cycles 6 Periods 1.0 WT

This course is designed for students who require instruction in multi-syllabic words and content specific vocabulary. Placement is based upon instructor approval. An active IEP is required.

74213 Standards-Based Math II**1.0 Credit 30 Cycles 6 Periods 1.0 WT**

This course advances a student's understanding and use of basic math skills and includes application of Algebra skills. The course follows the Algebra curriculum but is presented at a pace and depth that meets the ability of the students. Placement is based upon instructor approval. An active IEP is required.

77373 Interpersonal Skills II**1.0 Credit 30 Cycles 6 Periods 1.0 WT**

This course is designed for students with emotional support needs to provide them with a variety of strategies to claim their self-esteem, identify their individual talents, create internal motivation and drive to expand their talents, assume responsibility for themselves and others and interact responsibly with others. An active IEP is required.

78519 Instructional Support**Not credited 30 Cycles periods determined by IEP**

This course is designed to meet the students' needs for direct instruction to review skills in reading, written expression, and math. Students have the opportunity to complete assignments with support, receive review and repetition of concepts presented in regular education, receive instruction on editing their written assignments and complete unfinished tests and quizzes. An active IEP is required.

79008 Work Experience Program In-District (Sophomore, 2nd semester)**Weight, credit, and cycles are determined by IEP**

This course provides the student with an opportunity to work in a variety of ancillary support positions within the Central Dauphin School District. The student must demonstrate readiness for this program. These experiences provide students with on-the-job training, development of vocational skills, vocational assessment, and job coaching. This course is intended to expose students to a variety of work experiences. This course provides on-going assessment of the student's interests, aptitudes, abilities, and preferences. An active IEP is required.

11TH GRADE LEARNING SUPPORT**71315 English III****1.0 Credit 30 Cycles 6 Periods 1.0 WT****PREREQUISITE:** *Sophomore English or English II*

The continued sequence focuses on improving skills in reading and writing. Students study various genres of literature using the works of major British authors. Reading for life-long learning is an emphasis. Preparation for state assessments continues. An active IEP is required.

72315 Instructional Reading III**1.0 Credit 30 Cycles 6 Periods 1.0 WT**

This course is designed for students who require instruction in multi-syllabic words and content specific vocabulary. Placement is based upon instructor approval. An active IEP is required.

74315 Standards-Based Math III**1.0 Credit 30 Cycles 6 Periods 1.0 WT**

This course advances a student's understanding and use of basic math skills and includes application of Geometry skills. The course follows the Geometry curriculum but is presented at a pace and depth that meets the ability of the students. Placement is based upon instructor approval. An active IEP is required.

77375 Interpersonal Skills III**1.0 Credit 30 Cycles 6 Periods 1.0 WT**

This course is designed for students with emotional support needs to provide them with a variety of strategies to claim their self-esteem, identify their individual talents, create internal motivation and drive to expand their talents, assume responsibility for themselves and others, and interact responsibly with others. An active IEP is required.

79008 Work Experience Program Community – Junior**Weight, credit, and cycles are determined by IEP**

This course is designed to provide vocational experience to the students in preparation for becoming productive members of the work force. This course identifies a job match of employer needs and student skills based on student interests, aptitudes, abilities, and preferences. The training and supervision of the students will vary depending upon the strengths and supports required to meet the students' needs. An active IEP is required.

78519 Instructional Support**Not credited 30 Cycles Periods determined by IEP**

This course is designed to meet the student's need for direct instruction to review skills in reading, written expression, and math. Students have the opportunity to complete assignments with support, receive review and repetition of concepts presented in regular education, receive instruction on editing their written assignments and complete unfinished tests and quizzes. An active IEP is required.

12TH GRADE LEARNING SUPPORT**71417 English IV****1.0 Credit 30 Cycles 6 Periods 1.0 WT**

The final year of the sequence builds reading, vocabulary, and writing skills in relation to career opportunities. The literary focus is on World literature including additional American and British authors as well as reading for life-long learning. An active IEP is required.

74415 Standards-Based Math IV**1.0 Credit 30 Cycles 6 Periods 1.0 WT**

This course advances a student's understanding and use of basic math skills and includes application of Consumer Math skills. The course follows the Consumer Math curriculum but is presented at a pace and depth that meets the ability of the students. Placement is based upon instructor approval. An active IEP is required.

77377 Interpersonal Skills IV**1.0 Credit 30 Cycles 6 Periods 1.0 WT**

This course is designed for students with emotional support needs to provide them with a variety of strategies to claim their self-esteem, identify their individual talents, create internal motivation and drive to expand their talents, assume responsibility for themselves and others, and interact responsibly with others. An active IEP is required.

78519 Instructional Support**Not credited 30 Cycles Periods determined by IEP**

This course is designed to meet the student's need for direct instruction to review skills in reading, written expression, and math. Students have the opportunity to complete assignments with support, receive review and repetition of concepts presented in regular education, receive instruction on editing their written assignments and complete unfinished tests and quizzes. An active IEP is required.

79008 Work Experience Program Community – Junior**Weight, credit, and cycles are determined by IEP**

This course is designed to provide vocational experience to the students in preparation for becoming productive members of the work force. This course identifies a job match of employer needs and student skills based on student interests, aptitudes, abilities, and preferences. The training and supervision of the students will vary depending upon the strengths and supports required to meet the students' needs. An active IEP is required.

SUPPLEMENTAL/FULL-TIME LEARNING SUPPORT**9TH GRADE****71161 English I****1.0 Credit 30 Cycles 6 Periods 1.0 WT**

This course focuses on the development of writing skills and preparation for the state assessments. The literature is a survey of the major genres of poetry, short story, drama, and novel. Reading skills and vocabulary development are stressed. Library research techniques are reinforced. Placement is based upon instructor approval. An active IEP is required.

74111 (74171) Standards-Based Math I**1.0 Credit 30 Cycles 6 Periods 1.0 WT**

This course advances a student's understanding and use of basic math skills and includes application of pre-algebra skills. The course follows the Algebra IA and IB curriculum but is presented at a pace and depth that meets the ability of the students. Placement is based upon instructor approval. An active IEP is required.

73361 United States History II**1.0 Credit 30 Cycles 6 Periods 1.0 WT**

This course is recommended for all grade 9 students. It covers the time span from the 1890's to the present. It includes the general study of the growth of our nation along with related Pennsylvania and minority histories. Key aspects of economic, military, political, geographic, as well as social and cultural areas are studied. Placement is based upon instructor approval. An active IEP is required.

75161 Science**1.0 Credit 30 Cycles 6 Periods 1.0 WT**

An introductory course comprised primarily of learning experiences, and which relates principles and processes from both biological and physical science to the student's daily life. Placement is based upon instructor approval. An active IEP is required.

77361 Social Skills I**1.0 Credit 30 Cycles 6 Periods 1.0 WT**

Social skills instruction is available to those students who experience difficulty in understanding and responding appropriately to peers and adults in various situations and environments. Curriculum is geared toward specific issues identified within a student's IEP with an emphasis on verbal and non-verbal forms of communication. Placement is based upon instructor approval. An active IEP is required.

78579 Instructional Support

Not Credited 30 Cycles Periods determined by IEP

This course is designed to meet the students' needs for direct instruction to review skills in reading, written expression, and math. Students have the opportunity to complete assignments with support, receive review and repetition of concepts presented in regular education, receive instruction on editing their written assignments and complete unfinished tests and quizzes. Placement is based upon instructor approval. An active IEP is required.

61209 Adaptive Physical Education

0.5 Credit 15 Cycles 6 Periods 1.0 WT

Adaptive physical education is designed for students who cannot participate in regular physical education class. The aim of the program is to help the student develop physically, mentally, and socially through a program of selected activities suited to the individual's capabilities. Some of the activities include archery, corrective exercises, aerobics, and table games.

10TH GRADE**71263 English II**

1.0 Credit 30 Cycles 6 Periods 1.0 WT

PREREQUISITE: *Freshman English or English I*

This continuation of the sequence provides further development in writing and state assessment topics. The literature focus is on American authors with an emphasis on growth of reading and vocabulary skills. Placement is based upon instructor approval. An active IEP is required.

74213 (74273) Standards-Based Math II

1.0 Credit 30 Cycles 6 Periods 1.0 WT

This course advances a student's understanding and use of basic math skills and includes application of Algebra skills. The course follows the Algebra curriculum but is presented at a pace and depth that meets the ability of the students. Placement is based upon instructor approval. An active IEP is required.

73632 American Government and Citizenship

1.0 Credit 30 Cycles 6 Periods 1.0 WT

This course is recommended for all grade ten students. It is a comprehensive study of citizenship, nationals, state, and local governments, political parties, and politics. It will involve an in-depth study of the three branches of government and how they are influenced and guided by interest groups and lobbyists. The U.S. Constitution and Bill of Rights are also studied. The relationship of government to the individual, the family, community, and the economy, as well as contemporary issues are explored. Placement is based upon instructor approval. An active IEP is required.

75263 Biology I

1.0 Credits 30 Cycles 6 Periods 1.0 WT

Biology introduces the student to the living condition with an emphasis on life processes, cell structure and function, reproduction, genetics, and evolution. Environmental science is integrated into this course. A research project is required for all students involving experimentation, data collection, and analysis. Placement is based on instructor approval. An active IEP is required.

77363 Social Skills II

1.0 Credit 30 Cycles 6 Periods 1.0 WT

Social skills instruction is available to those students who experience difficulty in understanding and responding appropriately to peers and adults in various situation and environments. Curriculum is geared toward specific issues identified within a student's IEP with an emphasis on verbal and non-verbal forms of communication. Placement is based on instructor approval. An active IEP is required.

78579 Instructional Support**Not Credited 30 Cycles Periods determined by IEP**

This course is designed to meet the students' needs for direct instruction to review skills in reading, written expression, and math. Students have the opportunity to complete assignments with support, receive review and repetition of concepts presented in regular education, receive instruction on editing their written assignments and complete unfinished tests and quizzes. Placement is based upon instructor approval. An active IEP is required.

79008 Work Experience Program In-District**Weight, credit, and cycles are determined by IEP**

This course provides the student with an opportunity to work in a variety of ancillary support positions within the Central Dauphin School District. The student must demonstrate readiness for this program. These experiences provide students with on-the-job training, development of vocational skills, vocational assessment, and job coaching. This course is intended to expose students to a variety of work experiences. This course provides on-going assessment of student interests, aptitudes, abilities, and preferences. An active IEP is required.

61209 Adaptive Physical Education**0.5 Credit 15 Cycles 6 Periods 1.0 WT**

Adaptive physical education is designed for students who cannot participate in regular physical education class. The aim of the program is to help the student develop physically, mentally, and socially through a program of selected activities suited to the individual's capabilities. Some of the activities include archery, corrective exercises, aerobics, and table games.

11TH GRADE**71365 English III****1.0 Credit 30 Cycles 6 Periods 1.0 WT****PREREQUISITE:** *Sophomore English or English II*

The continued sequence focuses on improving skills in reading and writing. Research techniques for consumer use are introduced. Students study various genres of literature using the works of major British authors. Reading for life-long learning is an emphasis. Preparation for state assessments continues. Placement is based upon instructor approval. An active IEP is required.

74315 (74375) Standards-Based Math III**1.0 Credit 30 Cycles 6 Periods 1.0 WT**

This course advances a student's understanding and use of basic math skills and includes application of Geometry skills. The course follows the Geometry curriculum but is presented at a pace and depth that meets the ability of the students. Placement is based upon instructor approval. An active IEP is required.

73165 World Cultures**1.0 Credit 30 Cycles 6 Periods 1.0 WT**

This course is a requirement for graduation and is recommended for the grade eleven student. World Cultures presents students with an introduction to anthropology and an in-depth look at 6 major culture areas: sub-Saharan, Africa, the Indian subcontinent, China, Japan, the former Soviet Union, and the Middle East. The culture areas are presented showing the effects of geography, history, and biology on the development of culture, emphasizing understanding of, and appreciation for, differences and similarities. Placement is based upon instructor approval. An active IEP is required.

77365 Social Skills III**1.0 Credit 30 Cycles 6 Periods 1.0 WT**

Social skills instruction is available to those students who experience difficulty in understanding and responding appropriately to peers and adults in various situations and environments. Curriculum is geared toward specific issues identified within a student's IEP with an emphasis on verbal and non-verbal forms of communication. Placement is based upon instructor approval. An active IEP is required.

78579 Instructional Support**Not Credited 30 Cycles Periods determined by IEP**

This course is designed to meet the students' needs for direct instruction to review skills in reading, written expression, and math. Students have the opportunity to complete assignments with support, receive review and repetition of concepts presented in regular education, receive instruction on editing their written assignments and complete unfinished tests and quizzes. Placement is based upon instructor approval. An active IEP is required.

79008 Work Experience Program In-District (Junior)**Weight, credit, and cycles are determined by IEP**

This course provides the student with an opportunity to work in a variety of ancillary support positions within the Central Dauphin School District. The student must demonstrate readiness for this program. These experiences provide students with on-the-job training, development of vocational skills, vocational assessment, and job coaching. This course is intended to expose students to a variety of work experiences. This course provides on-going assessment of student interests, aptitudes, abilities, and preferences. An active IEP is required.

61209 Adaptive Physical Education**0.5 Credit 15 Cycles 6 Periods 1.0 WT**

Adaptive physical education is designed for students who cannot participate in regular physical education class. The aim of the program is to help the student develop physically, mentally, and socially through a program of selected activities suited to the individual's capabilities. Some of the activities include archery, corrective exercises, aerobics, and table games.

12TH GRADE**71467 English IV****1.0 Credit 30 Cycles 6 Periods 1.0 WT****PREREQUISITE:** *Junior English or English III*

The final year of the sequence builds reading, vocabulary and writing skills in relation to career opportunities. Consumer research techniques culminate in an independent project. The literary focus is on World literature including additional American and British authors as well as reading for life-long learning. Placement is based upon instructor approval. An active IEP is required.

74415 (74477) Standards-Based Math IV**1.0 Credit 30 Cycles 6 Periods 1.0 WT**

This course advances a student's understanding and use of basic math skills and includes application of Consumer Math skills. The course follows the Consumer Math curriculum but is presented at a pace and depth that meets the ability of the students. Placement is based upon instructor approval. An active IEP is required.

77367 Social Skills IV**1.0 Credit 30 Cycles 6 Periods 1.0 WT**

Social skills instruction is available to those students who experience difficulty in understanding and responding appropriately to peers and adults in various situation and environments. Curriculum is geared toward specific issues identified within a student's IEP with an emphasis on verbal and non-verbal forms of communication. Placement is based upon instructor approval. An active IEP is required.

78579 Instructional Support**Not Credited 30 Cycles Periods determined by IEP**

This course is designed to meet the students' needs for direct instruction to review skills in reading, written expression, and math. Students have the opportunity to complete assignments with support, receive review and repetition of concepts presented in regular education, receive instruction on editing their written assignments and complete unfinished tests and quizzes. Placement is based upon instructor approval. An active IEP is required.

79008 Work Experience Program In-District (Senior)**Weight, credit, and cycles are determined by IEP**

This course provides the student with an opportunity to work in a variety of ancillary support positions within the Central Dauphin School District. The student must demonstrate readiness for this program. These experiences provide students with on-the-job training, development of vocational skills, vocational assessment, and job coaching. This course is intended to expose students to a variety of work experiences. This course provides on-going assessment of student interests, aptitudes, abilities, and preferences. An active IEP is required.

61209 Adaptive Physical Education**0.5 Credit 15 Cycles 6 Periods 1.0 WT**

Adaptive physical education is designed for students who cannot participate in regular physical education class. The aim of the program is to help the student develop physically, mentally, and socially through a program of selected activities suited to the individual's capabilities. Some of the activities include archery, corrective exercises, aerobics, and table games.

LIFE SKILLS SUPPORT**72529 Functional Reading****1.0 Credit 30 Cycles 6 Periods 1.0 WT**

This course focuses on functional skills instruction while at the same time teaching basic and academic skills in reading (e.g., teaching communication and measuring skills while cooking, teaching reading skills while teaching appropriate ordering skills in a restaurant). The IEP is a tool that is used by the Team to articulate priority objectives for each student on an individualized basis. IEP Teams, including parents and guardians, consider each student's needs related to both academic skills and functional skills in the area of reading and make individualized decisions regarding the proportion of time spent on each area. Students are assessed on the curriculum according to the Pennsylvania Alternate System of Assessment. Placement is based on instructor approval. An active IEP is required.

74549 Functional Mathematics**1.0 Credit 30 Cycles 6 Periods 1.0 WT**

This course focuses on functional skills instruction while at the same time teaching basic and academic skills in mathematics (e.g., selecting coins for a purchase, matching quantities, sequencing house). The IEP is a tool that is used by the Team to articulate priority objectives for each student on an individualized basis. IEP Teams, including parents and guardians, consider each student's needs related to both academic skills and functional skills in the area of mathematics and make individualized decisions regarding the proportion of time spent on each area. Students are assessed on the curriculum according to the Pennsylvania Alternate System of Assessment. Placement is based on instructor approval. An active IEP is required.

75849 Functional Science**1.0 Credit 30 Cycles 6 Periods 1.0 WT**

This course focuses on functional skills instruction while at the same time teaching basic and academic skills in science (e.g., adapting and preparing for seasonal changes, household chemical safety, identifying heavy/light objects in everyday physical environment, identifying basic science phenomenon). The IEP is a tool that is used by the Team to articulate priority objectives for each student on an individualized basis. IEP Teams, including parents and guardians, consider each student's needs related to both academic skills and functional skills in the area of science and make individualized decisions regarding the proportion of time spent on each area. Students are assessed on the curriculum according to the Pennsylvania Alternate System of Assessment. Placement is based on instructor approval. An active IEP is required.

79006 Work Experience**Weight, credit, and cycles are determined by IEP**

This program provides students with an opportunity to be lifelong learners, responsible citizens, and to be productive workers in the area of employment which they are best suited for throughout the different stages of their high school careers from 9th grade through graduation. The program starts by having students receive on the job training in a non-paid training site. Work sites may be in-district or within the community. Students who have mastered the necessary skills in the non-paid training program have the option of moving on to a paid training position working at a school building within the District. It is important to note that students working in this program must also obtain Board approval and submit a State Police clearance check, child abuse check, and FBI check. The FBI clearance requires that the student have a state non-driver's ID. In order to get a state ID, the student will need his/her original birth certificate and social security card. Other items are required as well.

61209 Adaptive Physical Education**0.5 Credit 15 Cycles 6 Periods 1.0 WT**

Adaptive physical education is designed for students who cannot participate in regular physical education class. The aim of the program is to help the student develop physically, mentally, and socially through a program of selected activities suited to the individual's capabilities. Some of the activities include archery, corrective exercises, aerobics, and table games.

EMOTIONAL SUPPORT**9TH GRADE****71131 English I****1.0 Credit 30 Cycles 6 Periods 1.0 WT**

This course focuses on the development of writing skills and preparation for the state assessments. The literature is a survey of the major genres of poetry, short story, drama, and novel. Reading skills and vocabulary development are stressed. Library research techniques are reinforced. Placement is based upon instructor approval. An active IEP is required.

74111 (74171) Standards-Based Math I**1.0 Credit 30 Cycles 6 Periods 1.0 WT**

This course advances a student's understanding and use of basic math skills and includes application of pre-algebra skills. The course follows the Algebra IA and IB curriculum but is presented at a pace and depth that meets the ability of the students. Placement is based upon instructor approval. An active IEP is required.

73331 U.S. History II**1.0 Credit 30 Cycles 6 Periods 1.0 WT**

This course is recommended for all grade nine students. It covers the time span from the 1890's to the present. It includes the general study of the growth of our nation along with related Pennsylvania and minority histories. Key aspects of economic, military, political, geographic as well as social and cultural area are to be studied. Placement is based upon instructor approval. An active IEP is required.

75131 Science**1.0 Credit 30 Cycles 6 Periods 1.0 WT**

An introductory course comprised primarily of learning experiences, and which relates principles and processes from both biological and physical science to the student's daily life. An active IEP is required.

76431 Affective Skills I**1.0 Credit 30 Cycles 6 Periods 1.0 WT**

This course is designed for students with emotional support needs to provide them with a variety of strategies to claim their self-esteem, identify their individual talents, create internal motivation and drive to expand their talents, assume responsibility for themselves and others in and interact responsibly with others. An active IEP is required.

78539 Instructional Support**Not Credited 30 Cycles Periods determined by IEP**

This course is designed to meet the students' needs for direct instruction to review skills in reading, written expression, and math. Students have the opportunity to complete assignments with support, receive review and repetition of concepts presented in regular education, receive instruction on editing their written assignments and complete unfinished tests and quizzes. Placement is based upon instructor approval. An active IEP is required.

10TH GRADE**71233 English II****1.0 Credit 30 Cycles 6 Periods 1.0 WT****PREREQUISITE:** *Freshman English or English I*

This continuation of the sequence provides further development in writing and state assessment topics. The literature focus is on American authors with an emphasis on growth of reading and vocabulary skills. Placement is based upon instructor approval. An active IEP is required.

74213 (74273) Standards-Based Math II**1.0 Credit 30 Cycles 6 Periods 1.0 WT**

This course advances a student's understanding and use of basic math skills and includes application of Algebra skills. The course follows the Algebra curriculum but is presented at a pace and depth that meets the ability of the students. Placement is based upon instructor approval. An active IEP is required.

73233 American Government and Citizenship**1.0 Credit 30 Cycles 6 Periods 1.0 WT**

This course is recommended for all grade ten students. It is a comprehensive study of citizenship, nationals, state, and local governments, political parties, and politics. It will involve an in-depth study of the three branches of government and how they are influenced and guided by interest groups and lobbyists. The U.S. Constitution and Bill of Rights are also studied. The relationship of government to the individual, the family, community, and the economy, as well as contemporary issues are explored. Placement is based upon instructor approval. An active IEP is required.

75233 Biology I**1.0 Credits 30 Cycles 6 Periods 1.0 WT**

Biology introduces the student to the living condition with an emphasis on life processes, cell structure and function, reproduction, genetics, and evolution. Environmental science is integrated into this course. A research project is required of all students involving experimentation, data collection and analysis. Placement is based upon instructor approval. An active IEP is required.

76433 Affective Skills II**1.0 Credits 30 Cycles 6 Periods 1.0 WT**

This course is designed for students with emotional support needs to provide them with a variety of strategies to claim their self-esteem, identify their individual talents, create internal motivation and drive to expand their talents, assume responsibility for themselves and others, and interact responsibly with others. An active IEP is required.

78539 Instructional Support**Not Credited 30 Cycles Periods determined by IEP**

This course is designed to meet the students' needs for direct instruction to review skills in reading, written expression, and math. Students have the opportunity to complete assignments with support, receive review and repetition of concepts presented in regular education, receive instruction on editing their written assignments and complete unfinished tests and quizzes. Placement is based upon instructor approval. An active IEP is required.

11TH GRADE**71335 English III****1.0 Credit 30 Cycles 6 Periods 1.0 WT****PREREQUISITE:** *Sophomore English or English II*

The continued sequence focuses on improving skills in reading and writing. Students study various genres of literature using the works of major British authors. Reading for life-long learning is an emphasis. Preparation for state assessments continues. An active IEP is required.

74315 (74375) Standards-Based Math III**1.0 Credit 30 Cycles 6 Periods 1.0 WT**

This course advances a student's understanding and use of basic math skills and includes application of Geometry skills. The course follows the Geometry curriculum but is presented at a pace and depth that meets the ability of the students. Placement is based upon instructor approval. An active IEP is required.

73135 World Cultures**1.0 Credit 30 Cycles 6 Periods 1.0 WT**

This course is recommended for all grade 11 students. World Cultures presents students with an introduction to anthropology and an in-depth look at six major culture areas: sub-Saharan Africa, the Indian subcontinent, China, Japan, Russia, and the Middle East. The regions are presented showing the effects of geography, history, politics, and economics on culture, emphasizing understanding of, and appreciation for, differences and similarities. An active IEP is required.

78232 Standards-Based Science**1.0 Credit 30 Cycles 6 Periods 1.0 WT**

An introductory course comprised primarily of learning experiences, and which relates principles and processes from both biological and physical science to the student's daily life. Placement is based upon instructor approval. An IEP is required.

78539 Instructional Support**Not Credited 30 Cycles Periods determined by IEP**

This course is designed to meet the students' needs for direct instruction to review skills in reading, written expression, and math. Students have the opportunity to complete assignments with support, receive review and repetition of concepts presented in regular education, receive instruction on editing their written assignments and complete unfinished tests and quizzes. Placement is based upon instructor approval. An active IEP is required.

76435 Affective Skills III**1.0 Credit 30 Cycles 6 Periods 1.0 WT**

This course is designed for students with emotional support needs to provide them with a variety of strategies to claim their self-esteem, identify their individual talents, create internal motivation and drive to expand their talents, assume responsibility for themselves and others, and interact responsibly with others. An active IEP is required.

61209 Adaptive Physical Education**0.5 Credit 15 Cycles 6 Periods 1.0 WT**

Adaptive physical education is designed for students who cannot participate in regular physical education class. The aim of the program is to help the student develop physically, mentally, and socially through a program of selected activities suited to the individual's capabilities. Some of the activities include archery, corrective exercises, aerobics, and table games.

12TH GRADE**71437 English IV****1.0 Credit 30 Cycles 6 Periods 1.0 WT**

The final year of the sequence builds reading, vocabulary, and writing skills in relation to career opportunities. The literary focus is on World literature including additional American and British authors as well as reading for life-long learning. An active IEP is required.

74415 Standards-Based Math IV**1.0 Credit 30 Cycles 6 Periods 1.0 WT**

This course advances a student's understanding and use of basic math skills and includes application of Consumer Math skills. The course follows the Consumer Math curriculum but is presented at a pace and depth that meets the ability of the students. Placement is based upon instructor approval. An active IEP is required.

76437 Affective Skills IV**1.0 Credit 30 Cycles 6 Periods 1.0 WT**

This course is designed for student with emotional support needs to provide them with a variety of strategies to claim their self-esteem, identify their individual talents, create internal motivation and drive to expand their talents, assume responsibility for themselves and others, and interact responsibly with others. An active IEP is required.

78539 Instructional Support**Not Credited 30 Cycles Periods determined by IEP**

This course is designed to meet the students' needs for direct instruction to review skills in reading, written expression, and math. Students have the opportunity to complete assignments with support, receive review and repetition of concepts presented in regular education, receive instruction on editing their written assignments and complete unfinished tests and quizzes. Placement is based upon instructor approval. An active IEP is required.

79008 Work Experience Program In-District

Weight, credit, and cycles are determined by IEP

This course provides the student with an opportunity to work in a variety of ancillary support positions within the Central Dauphin School District. The student must demonstrate readiness for this program. These experiences provide students with on-the-job training, development of vocational skills, vocational assessment, and job coaching. This course is intended to expose students to a variety of work experiences. This course provides on-going assessment of the student's interests, aptitudes, abilities, and preferences. An active IEP is required.

61209 Adaptive Physical Education

0.5 Credit 15 Cycles 6 Periods 1.0 WT

Adaptive physical education is designed for students who cannot participate in regular physical education class. The aim of the program is to help the student develop physically, mentally, and socially through a program of selected activities suited to the individual's capabilities. Some of the activities include archery, corrective exercises, aerobics, and table games.

AUTISTIC SUPPORT**72529 Functional Reading**

1.0 Credit 30 Cycles 6 Periods 1.0 WT

This course focuses on functional skills instruction while at the same time teaching basic and academic skills in reading (e.g., teaching communication and measuring skills while cooking, teaching reading skills while teaching appropriate ordering skills in a restaurant). The IEP is a tool that is used by the Team to articulate priority objectives for each student on an individualized basis. IEP Teams, including parents and guardians, consider each student's needs related to both academic skills and functional skills in the area of reading and make individualized decisions regarding the proportion of time spent on each area. Students are assessed on the curriculum according to the Pennsylvania Alternate System of Assessment. Placement is based on instructor approval. An active IEP is required.

74549 Functional Mathematics

1.0 Credit 30 Cycles 6 Periods 1.0 WT

This course focuses on functional skills instruction while at the same time teaching basic and academic skills in mathematics (e.g., selecting coins for a purchase, matching quantities, sequencing house). The IEP is a tool that is used by the Team to articulate priority objectives for each student on an individualized basis. IEP Teams, including parents and guardians, consider each student's needs related to both academic skills and functional skills in the area of mathematics and make individualized decisions regarding the proportion of time spent on each area. Students are assessed on the curriculum according to the Pennsylvania Alternate System of Assessment. Placement is based on instructor approval. An active IEP is required.

75849 Functional Science

1.0 Credit 30 Cycles 6 Periods 1.0 WT

This course focuses on functional skills instruction while at the same time teaching basic and academic skills in science (e.g., adapting and preparing for seasonal changes, household chemical safety, identifying heavy/light objects in everyday physical environment, identifying basic science phenomenon). The IEP is a tool that is used by the Team to articulate priority objectives for each student on an individualized basis. IEP Teams, including parents and guardians, consider each student's needs related to both academic skills and functional skills in the area of science and make individualized decisions regarding the proportion of time spent on each area. Students are assessed on the curriculum according to the Pennsylvania Alternate System of Assessment. Placement is based on instructor approval. An active IEP is required.

79006 Work Experience**Weight, credit, and cycles are determined by IEP**

This program provides students with an opportunity to be lifelong learners, responsible citizens, and to be productive workers in the area of employment which they are best suited for throughout the different stages of their high school careers from 9th grade through graduation. The program starts by having students receive on the job training in a non-paid training site. Work sites may be in-district or within the community. Students who have mastered the necessary skills in the non-paid training program have the option of moving on to a paid training position working at a school building within the District. It is important to note that students working in this program must also obtain Board approval and submit a State Police clearance check, child abuse check, and FBI check. The FBI clearance requires that the student have a state non-driver's ID. In order to get a state ID, the student will need his/her original birth certificate and social security card. Other items are required as well.

61209 Adaptive Physical Education

0.5 Credit 15 Cycles 6 Periods 1.0 WT

Adaptive physical education is designed for students who cannot participate in regular physical education class. The aim of the program is to help the student develop physically, mentally, and socially through a program of selected activities suited to the individual's capabilities. Some of the activities include archery, corrective exercises, aerobics, and table games.

NCAA Eligibility Requirements

The National Collegiate Athletic Association is a voluntary organization through which the nation's colleges and universities govern their athletics programs. It is comprised of institutions, conferences, organizations, and individuals committed to the best interests, education, and athletics participation of student-athletes. The NCAA Eligibility Center will certify the academics and amateur credentials of all college-bound student-athletes who wish to compete in NCAA Division I or II athletics.

The NCAA has approved the following courses for use in establishing the initial eligibility certification status of student-athletes from this school.

English	Science
Freshman College Prep English	Environmental Science
Freshman Honors English	Honors Biology
Sophomore College Prep English	Biology I
Sophomore Honors English	Honors Chemistry
Junior College Prep English	Chemistry
Junior Honors English	Physics
Senior College Prep English	Biology II
Senior Advanced Placement English	Organic Chemistry
20 th Century Literature	Anatomy and Physiology
Multicultural Literature	STEM I and STEM II
Public Speaking	Geology
Creative Writing	Astronomy
Journalism I	Meteorology
Poetry	Advanced Placement Biology
	Advanced Placement Chemistry
	Advanced Placement Environmental Science
Social Studies	Advanced Placement Physics I & II
United States History II	
Advanced Placement History of the United States	
American Government and Citizenship	Mathematics
Advanced Placement United States Government and Politics	College Prep Algebra I
World Cultures	College Prep Geometry
Advanced Placement World History	Honors Geometry
Advanced Placement Human Geography	College Prep Algebra II
Sociology	Honors Algebra II
African American Studies	Advanced Math Topics
African American Studies II	College Prep Pre-Calculus
Multicultural History	AP Pre-Calculus
History of Western Civilization	Calculus I
Advanced Placement European History	Advanced Placement Calculus AB and BC
Psychology	Probability and Statistics
Advanced Placement Psychology	Advanced Placement Statistics
Economics	Linear Algebra
Advanced Placement Economics Micro/Macro	
Critical Media Literacy	

Additional Core Courses	Other Eligible Courses
French I	Advanced Placement Computer Science A
French II	Business Law
French III	
Advanced Placement French	
Spanish I	
Spanish II	
Spanish III	
Advanced Placement Spanish	
German I	
German II	
German III	
Advanced Placement German	
Latin I	
Latin II	
Latin III	
Advanced Placement Latin	

For more information regarding NCAA eligibility requirements please visit www.eligibilitycenter.org.

Division I Academic Standards

Division I schools require you to meet academic standards. To be eligible to practice, compete and receive an athletics scholarship in your first year of full-time enrollment, you must meet the following requirements:



DIVISION I

1. Earn 16 NCAA-approved core-course credits in the following areas:

ENGLISH	MATH (Algebra I or higher)	SCIENCE (Including one year of lab, if offered)	EXTRA (English, math or science)	SOCIAL SCIENCE	OTHER Any area listed to the left or courses listed in additional discipline (world language, comparative religion or philosophy)
4 years	3 years	2 years	1 year	2 years	4 years

2. Complete your 16 NCAA-approved core-course credits in eight academic semesters or four consecutive academic years from the start of ninth grade. If you graduate from high school early, you still must meet core-course requirements.
3. Complete 10 of your 16 NCAA-approved core-course credits, including seven in English, math or science, before the start of your seventh semester. Once you begin your seventh semester, any course needed to meet the 10/7 requirement cannot be replaced or repeated.
4. Earn a minimum 2.3 **core-course GPA**.
5. Ask your high school counselor to upload your **final official transcript** with proof of graduation to your Eligibility Center account.

EARLY ACADEMIC QUALIFIER

If you meet **specific criteria** after six semesters of high school, you may be deemed an early academic qualifier for Division I and may practice, compete and receive an athletics scholarship during your first year of full-time enrollment.

QUALIFIER

You may practice, compete and receive an athletics scholarship during your first year of full-time enrollment.

ACADEMIC REDSHIRT

You may practice during your first regular academic term and receive an athletics scholarship during your first year of full-time enrollment but may NOT compete during your first year of full-time enrollment. You must pass either eight quarter or nine semester hours to practice in the next term.

NONQUALIFIER

You will not be able to practice, compete or receive an athletics scholarship during your first year of full-time enrollment.



ELIGIBILITY CENTER

GRADE
9
REGISTER

- » If you haven't yet, [register](https://eligibilitycenter.org) for a free Profile Page account at eligibilitycenter.org for information on NCAA initial-eligibility requirements.
- » Use NCAA Research's [Interactive map](#) to help locate NCAA schools you're interested in attending.
- » Find your high school's list of NCAA-approved core courses at eligibilitycenter.org/courselist to ensure you're taking the right courses, and earn the best grades possible!

GRADE
10
PLAN

- » If you're being actively recruited by an NCAA school and have a Profile Page account, [transition](#) it to the required [certification account](#).
- » Monitor the [task list](#) in your NCAA Eligibility Center account for next steps.
- » At the end of the school year, ask your high school counselor from each school you attend to upload an official transcript to your Eligibility Center account.
- » If you fall behind academically, ask your high school counselor for help finding [approved courses](#) you can take.

GRADE
11
STUDY

- » Ensure your [sports participation](#) information is correct in your Eligibility Center account.
- » Check with your high school counselor to make sure you're on track to complete the required number of NCAA-approved [core courses](#) and graduate on time with your class.
- » Share your [NCAA ID](#) with NCAA schools recruiting you so each school can place you on its [institutional request list](#).
- » At the end of the school year, ask your high school counselor from each school you attend to upload an official transcript to your Eligibility Center account.

GRADE
12
GRADUATE

- » [Request your final amateurism certification](#) beginning April 1 (fall enrollees) or Oct. 1 (winter/spring enrollees) in your Eligibility Center account at eligibilitycenter.org.
- » Apply and be accepted to the NCAA school you plan to attend.
- » Complete your final NCAA-approved [core courses](#) as you prepare for graduation.
- » After you graduate, ask your high school counselor to upload your final [official transcript](#) with proof of graduation to your Eligibility Center account.

How to plan your high school courses to meet the 16 core-course requirement:

$$4 \times 4 = 16$$

9th
GRADE

(1) English
(1) Math
(1) Science
(1) Social Science
and/or other

4 CORE COURSES

10th
GRADE

(1) English
(1) Math
(1) Science
(1) Social Science
and/or other

4 CORE COURSES

11th
GRADE

(1) English
(1) Math
(1) Science
(1) Social Science
and/or other

4 CORE COURSES

12th
GRADE

(1) English
(1) Math
(1) Science
(1) Social Science
and/or other

4 CORE COURSES

CONTACT THE NCAA ELIGIBILITY CENTER

U.S. and Canada (except Quebec):
877-262-1492 (toll free), Monday-Friday
9 a.m. to 5 p.m. Eastern time
International (including Quebec):
on.ncaa.com/IntlContact



[@ncaaec](#) [@ncaaec](#) [@ncaaec](#) [@playcollegesports](#)



ELIGIBILITY CENTER

Division II Academic Standards

Division II schools require you to meet academic standards. To be eligible to practice, compete and receive an athletics scholarship in your first year of full-time enrollment, you must meet the following requirements:



DIVISION II

MAKE IT *YOURS*

1. Earn 16 NCAA-approved core-course credits in the following areas:

ENGLISH	MATH (Algebra I or higher)	SCIENCE (Including one year of lab, if offered)	EXTRA (English, math or science)	SOCIAL SCIENCE	OTHER Any area listed to the left or courses listed in additional discipline (world language, comparative religion or philosophy)
3 years	2 years	2 years	3 years	2 years	4 years

2. Earn a minimum 2.2 **core-course GPA**.
3. Ask your high school counselor to upload your **final official transcript** with proof of graduation to your Eligibility Center account.

EARLY ACADEMIC QUALIFIER

If you meet **specific criteria** after six semesters of high school, you may be deemed an early academic qualifier for Division II and may practice, compete and receive an athletics scholarship during your first year of full-time enrollment.

QUALIFIER

You may practice, compete and receive an athletics scholarship during your first year of full-time enrollment.

PARTIAL QUALIFIER

You may practice and receive an athletics scholarship but may NOT compete during your first year of full-time enrollment.



ELIGIBILITY CENTER

GRADE
9
REGISTER

- » If you haven't yet, [register](https://eligibilitycenter.org) for a free Profile Page account at eligibilitycenter.org for information on NCAA initial-eligibility requirements.
- » Use NCAA Research's [Interactive map](#) to help locate NCAA schools you're interested in attending.
- » Find your high school's list of NCAA-approved core courses at eligibilitycenter.org/courselist to ensure you're taking the right courses, and earn the best grades possible!

GRADE
10
PLAN

- » If you're being actively recruited by an NCAA school and have a Profile Page account, [transition](#) it to the required [certification account](#).
- » Monitor the [task list](#) in your NCAA Eligibility Center account for next steps.
- » At the end of the school year, ask your high school counselor from each school you attend to upload an official transcript to your Eligibility Center account.
- » If you fall behind academically, ask your high school counselor for help finding [approved courses](#) you can take.

GRADE
11
STUDY

- » Ensure your [sports participation](#) information is correct in your Eligibility Center account.
- » Check with your high school counselor to make sure you're on track to complete the required number of NCAA-approved [core courses](#).
- » Share your [NCAA ID](#) with NCAA schools recruiting you so each school can place you on its [institutional request list](#).
- » At the end of the school year, ask your high school counselor from each school you attend to upload an official transcript to your Eligibility Center account.

GRADE
12
GRADUATE

- » [Request your final amateurism certification](#) beginning April 1 (fall enrollees) or Oct. 1 (winter/spring enrollees) in your Eligibility Center account at eligibilitycenter.org.
- » Apply and be accepted to the NCAA school you plan to attend.
- » Complete your final NCAA-approved [core courses](#) as you prepare for graduation.
- » After you graduate, ask your high school counselor to upload your final [official transcript](#) with proof of graduation to your Eligibility Center account.

How to plan your high school courses to meet the 16 core-course requirement:

$$4 \times 4 = 16$$

9th GRADE

(1) English
(1) Math
(1) Science
(1) Social Science
and/or other

4 CORE COURSES

10th GRADE

(1) English
(1) Math
(1) Science
(1) Social Science
and/or other

4 CORE COURSES

11th GRADE

(1) English
(1) Math
(1) Science
(1) Social Science
and/or other

4 CORE COURSES

12th GRADE

(1) English
(1) Math
(1) Science
(1) Social Science
and/or other

4 CORE COURSES

CONTACT THE NCAA ELIGIBILITY CENTER

U.S. and Canada (except Quebec):
877-262-1492 (toll free), Monday-Friday
9 a.m. to 5 p.m. Eastern time
International (including Quebec):
on.ncaa.com/IntlContact



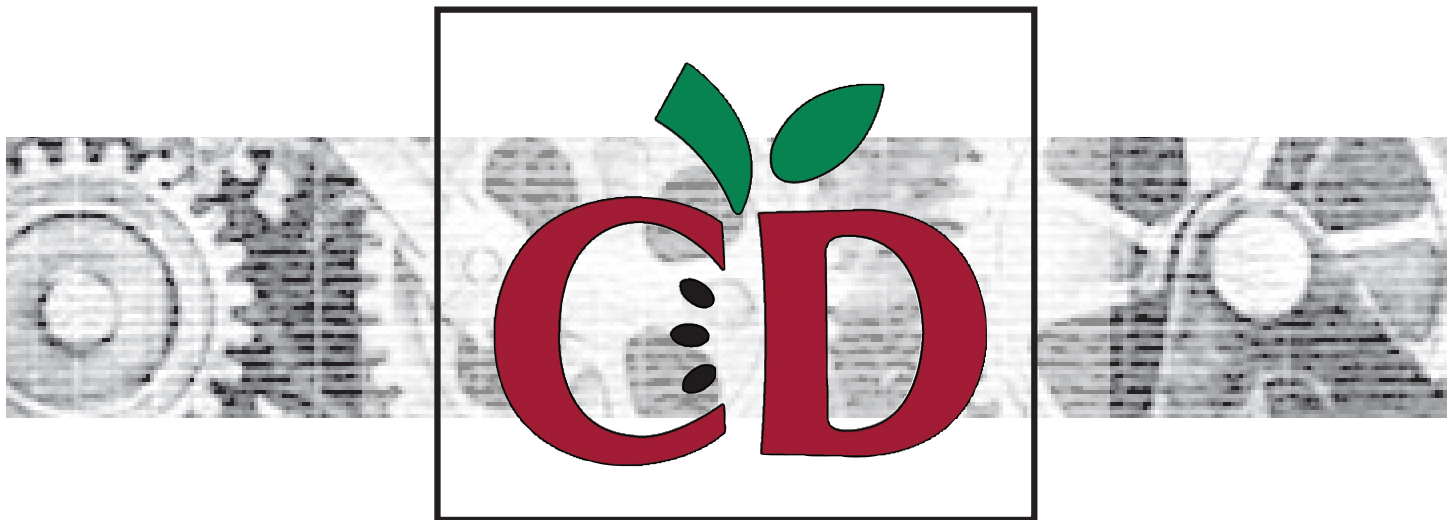
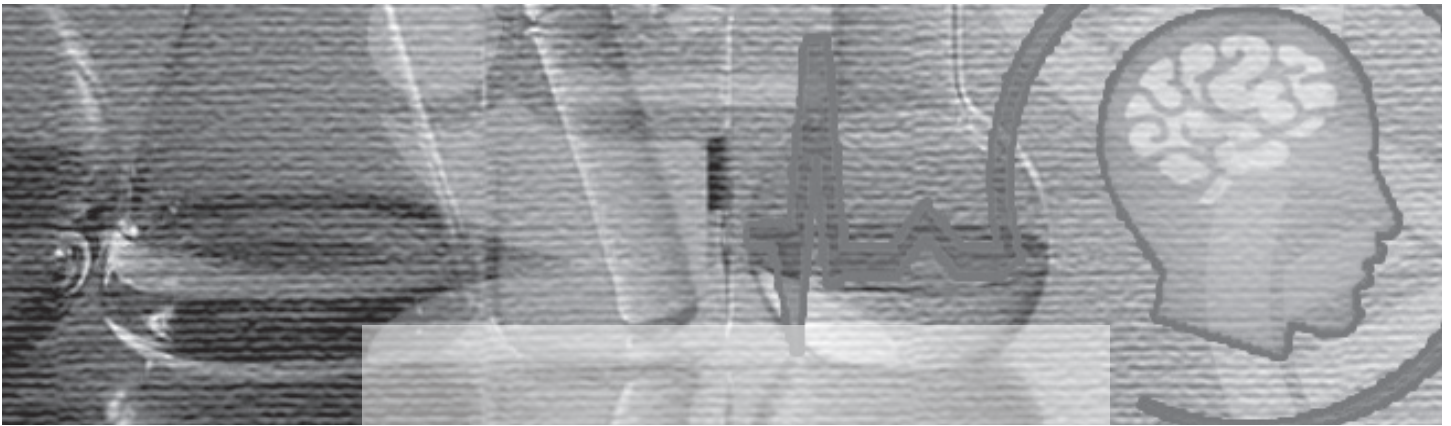
[@ncaaec](#) [@ncaaec](#) [@ncaaec](#) [@playcollegesports](#)



ELIGIBILITY CENTER



Central Dauphin School District
600 Rutherford Road
Harrisburg, PA 17109
(717) 545-4703
<http://www.cdschools.org>



CAREER PATHWAYS





CDSD Mission Statement

Central Dauphin, a uniquely diverse school district, ensures all students a challenging and dynamic curriculum that prepares them to succeed in a changing, global society by inspiring lifelong learning in a caring, collaborative community.

Career Pathways Vision Statement

Every student upon graduation will have the motivation, confidence, knowledge, and skills to continue in the Career Pathway that is most suited to the student's interests. Students who are confident and comfortable in career planning and the process of pursuing career goals will be more effective in achieving those goals and becoming productive and positive members of the community.



Dear Parents:

The age old question facing every student is: “What do I want to be when I grow up?”. This question can be intimidating for adults let alone young students who are faced with so many daily pressures.

It is our goal to assist students in developing a career plan that will give them the skills, knowledge and confidence to make sound, informed decisions when it comes to achieving career goals. Students will feel more confident as to the direction they need to go upon graduation whether they decide to attend a college, university, or trade school, join the military, or enter the workforce directly.

The Career Pathways program is designed to give students direction in scheduling classes and choosing activities and electives that are related to their area of career interest. Choosing a Career Pathway does not restrict or limit a student in scheduling choices. It will, however, assist students in scheduling electives that will most likely match their career goals. The purpose of Career Pathways is not to “lock” a young student into a particular career, but to provide the opportunity to explore different experiences that either reinforce the area of career interest or redirect them to explore another area of career interest.

Parents and guardians play an important role in assisting students in choosing a career or field of study. We encourage you to take time to talk to your child about careers and opportunities. If you have any questions regarding your child’s Career Pathway choice, please feel free to contact the school counselor or visit the Career Center.

TABLE OF CONTENTS

What Are Career Pathways?	1
What is Naviance?	1
Holland Types and Pathways Matches	3
CDSD Career Pathways	
• Arts & Communications	5
• Business & Technology.....	9
• Engineering & Industrial Technology	13
• Human Services	17
• Science & Health	21
Career Enhancement Opportunities	
• Academics	27
• Club & Activities	28
• Music Opportunities	29
• Athletics	29
Post-Secondary Preparation	
• Testing Opportunities.....	33
• Career Information & Exploration Opportunities.	34
Financial Aid Information	
• FASFA and SAR Forms.....	37
• Funding Resources	38

CAREER PATHWAYS

What are Career Pathways?

Choosing a future career path can be an intimidating and overwhelming experience for any student. What classes should be taken? What activities and clubs would provide hands-on experiences? What post-secondary training is needed? What about financial aid?

Career Pathways are flexible career groupings that are designed to assist students with making informed career and class scheduling decisions. Students will first select a Career Pathway when scheduling for their 9th grade year. Each pathway is designed to focus students on electives that will specifically relate to their area of career interest. The pathways are also designed to help students choose activities or job experiences that might assist them as they explore and pursue their career goals.

The Central Dauphin School District offers five Career Pathways:

- Arts & Communications
- Business & Technology
- Engineering & Industrial Technology
- Human Services
- Science & Health

ARTS & COMMUNICATIONS

This Pathway is designed to cultivate students' awareness, interpretation, application and production of visual, verbal, and written work.

BUSINESS & TECHNOLOGY

This Pathway is designed to prepare students for careers in the world of business, finance, and information systems.

ENGINEERING & INDUSTRIAL TECHNOLOGY

This Pathway is designed to cultivate students' interests, awareness and application to areas related to technologies necessary to design, develop, install or maintain physical systems.

HUMAN SERVICES

This Pathway is designed to cultivate students' interests, skills and experiences for employment in careers related to family and human needs.

SCIENCE & HEALTH

This Pathway is designed to cultivate students' interests in the life, physical and behavioral sciences, in addition to the planning, managing and providing of therapeutic services, diagnostic services, health information and biochemistry research development.

WHAT IS NAVIANCE?

The Central Dauphin District makes available to students and parents, Naviance, an on-line college and career based software. Students will be using this software as a tool throughout middle and high school as they begin to explore possible career choices and opportunities.

- Naviance provides information on occupations, educational requirements, training programs, colleges and universities, financial aid, and scholarship opportunities.
- Naviance allows students to explore careers based on skills, abilities, and general interests.
- CD Middle and High schools have separate log ins.

Students are encouraged to access the program and work with their parent/guardians as they begin to choose the Career Pathway with which they want to pursue. Each middle and high school has a unique log in that can be accessed through their guidance web page, or the student portal.

HOLLAND TYPES AND PATHWAYS MATCHES

Step One: Complete the Career Interest Profiler assessment on Naviance.

Step Two: Using your totals, identify the three words that have the highest scores. Record the word and number of the checks in the box below:

My Interest Codes Are:

1.	2.	3.
#	#	#

Step Three: Now we will match your Holland Interest Type with Career Pathways. In the columns below, circle your three interest code letters whenever they appear. (Use the first letter of each interest code above.)

Interest Codes:

ACSE

RISEC

RI

SAEC

RIS

Pathway:

Arts and Communications (AC)

Business and Technology (BT)

Engineering and Industrial Technology (EI)

Human Services (HS)

Science and Health (SH)

Step Four: Count the number of circles in each Pathway to determine your Primary and Secondary Pathways.

In the case of a tie, review the pathway descriptions and choose the pathways that are the best “fit” for you.

Primary Pathway _____ (Most number of circles)

Secondary Pathway _____ (Second most number of circles)

Note: This tool, as well as a series of other types, will be used to assist students and parents in the course selection process. As always, this is an ongoing process.



This Pathway is designed to cultivate students' awareness, interpretation, application and production of visual, verbal, and written work.

CAREER PATHWAY - ARTS AND COMMUNICATIONS

Are you interested in or do you enjoy...	Can you...
<ul style="list-style-type: none"> • reporting and writing • newspaper and magazine technology • advertising • multi-media productions • speech communication • acting • radio, TV, film, video • making videos • working with sound effects • performing/composing music • technical aspects of a live performance • performing in front of a live audience • working with computers and electronics • graphic arts • photography • art, design construction, make-up and fashion • the performance of dance • seeing art as an integral part of society • being an original thinker • creating new products 	<ul style="list-style-type: none"> • research • interview • write • meet deadlines • proofread • search the internet • use facial expressions, gestures, voice inflections • sing, dance, act, recite • display poise and stage presence • entertain and communicate with others • write and conduct an interview • play an instrument • write or perform music • work several types of sound equipment/light boards • use computers • design presentations and layouts • dance and express yourself • design or help construct sets • draw, paint • persuade and influence others

CAREER PATHWAY - ARTS & COMMUNICATIONS

FOCUS AREA	ENTRY	TECHNICAL/SKILLED	PROFESSIONAL
Performing Arts	Dance/Fitness Instructor- for private studios Costume Attendant Special Effects Worker Stage Crew/Prop Worker	Choreographer Community Theater Dancer Community Theater Director Set Designer Lighting Technician Sound Technician Music Technician Regional Events Judge Special Events Producer	Teacher - Music, Dance Dance Studio Owner Director Playwriter Professional Actor/Actress Music Video Recording Artist Professional Conductor Music Composer
Visual Arts	Desktop Publisher Graphic Artist Film Processor Stage Hand Layout Artist Film Processor Photographer- amateur Artist	Web Desinger Fashion Illustrator Film Processing Specialist Draftsperson Image Assembly Photographer-trained Technical Illustrator Medical Illustrator	Multi-Media Artist/ Animator Fashion Merchandiser/ Designer Graphic Designer Fashion Merchandiser/ Designer Interior Designer Illustrator Teacher - Art
Media & Public Relations	Copy Person Broadcast Intern Newspaper Intern Radio Operator Circulation Newsroom Worker Library Assistant	Mass Media Technology Proofreader Photo Journalist Typesetter Layout Dessigner Film Editor Photographic/Media Equipment Technician Audio /Video Equipment Technician Reporter Library Technician	Broadcasting/Sports Journalism Editor/ Columnist/ Journalist Diplomat Novelist Magazine Editor, Manager, Publisher Marketing Agent Producer Public Relations Director Librarian

CORE SUBJECTS

	ENTRY	TECHNICAL/SKILLED	PROFESSIONAL
GRADE 9	Freshman English Pre-Algebra or CP Algebra 1 Science US History II or World Cultures Physical Education Introduction to Web Design	Freshman English or CP Freshman English CP Algebra 1 or CP Geometry Science or Honors Biology US History II, World Cultures, AP United States History, or AP World History Physical Education World Language ** Introduction to Web Design	Freshman CP English or Freshman Honors English CP Algebra, CP Geometry, CP Algebra II, or Honors Algebra II Science or Honors Biology US History II, World Cultures, AP United States History, or AP World History Physical Education World Language** Introduction to Web Design
GRADE 10	Sophomore English CP Algebra I, CP Geometry, or CP Algebra II Biology American Government and Citizenship Physical Education Health	Sophomore English or Sophomore CP English CP Algebra I, CP Geometry, or CP Algebra II, Pre-calculus with Trigonometry A Biology American Government and Citizenship, or AP US Government and Politics Physical Education Health World Language**	Sophomore CP English or Sophomore Honors English CP Geometry, CP Algebra II, Honors Algebra II, Pre-Calculus with Trigonometry A, or Honors Pre-calculus with Trigonometry Biology, Honors Biology, Chemistry, or Honors Chemistry American Government and Citizenship, or AP US Government and Politics Physical Education Health World Language**
GRADE 11	Junior English CP Geometry, or CP Algebra II Earth Systems Science or Human Influence on the Environment US History II or World Cultures Physical Education Financial Literacy	Junior English or Junior CP English CP Geometry, CP Algebra II, Pre-Calculus with Trigonometry A or B, Honors Pre-Calculus with Trigonometry Earth Systems Science, Human Influence on the Environment, Chemistry, or Physics US History II, World Cultures, AP United States History, or AP World History Physical Education Financial Literacy World Language**	Junior CP English or Junior Honors English CP Algebra II, Pre-Calculus with Trigonometry A or B, Honors Pre-Calculus with Trigonometry, Calculus I, or AP Calculus AB Chemistry, Honors Chemistry, Biology II, Anatomy and Physiology, Physics, AP Biology, AP Physics, AP Environmental Science, or AP Chemistry US History II, World Cultures, AP United States History, or AP World History Physical Education Financial Literacy World Language**
GRADE 12	Senior English CP Algebra II, Consumer Math or Accounting Physical Education	Senior CP English or 20th Century Literature Advanced Math Topics, Probability and Statistics, Accounting, Economics, AP Economics, Pre-Calculus with Trigonometry A or B, AP Statistics, Calculus I, AP Calculus AB, or AP Calculus BC Physical Education	Senior CP English, 20th Century Literature, or AP English Advanced Math Topics, Probability and Statistics, Economics, AP Economics, Pre-Calculus with Trigonometry A or B, AP Statistics, Calculus I, AP Calculus AB, or AP Calculus BC Physical Education

** World Language Recommendations:

Entry - Optional (May choose language as an elective.)

Technical/Skilled - two or more consecutive years of same language (three or four years preferred).

Professional - two or more consecutive years of same language (three or four years preferred)

NOTE: Admission requirements to many 4-year colleges include a minimum of two years of the same World Language.

ARTS & COMMUNICATIONS

English

Creative Writing
Creative Writing II
Writing/Journalism
Dramatic Arts
Dramatic Arts II
Poetry
Public Speaking
TV Broadcasting
Twentieth Century Literature

Social Studies

AP Economics
AP European History
AP Human Geography
AP Psychology
History of Western Civilization
Multicultural History/Sociology
Psychology

Math

Consumer Math

Technology

Architectural Design
Digital Graphics
Exploring Technology Education
Game Design and 3D Animation
Promotional Graphics
Robotics & 3D Modeling
TV Studio 1
TV Studio 2

Business

Advanced Computer Concepts
Advanced Keyboarding and Office
Procedures (CDEHS)
AP Computer Science
Business Computer Applications
Programming and Web Page
Design

Art

Advanced Portfolio Development
Drawing and Painting I
Drawing and Painting II
Drawing and Painting III
Explorations in Art
Photography I
Photography II
Three Dimensional Art I
Three Dimensional Art II
Three Dimensional Art III
Visual Journaling

Family Consumer Science

Life Management Skills
Foods & Nutrition

Music

AP Music Theory
Band
Choir
Guitar I
Guitar II
Intro to Music Technology
Intro to Recording and Sound I
Marching Band
Music Keyboard I
Music Keyboard II
Music Theory I
Orchestra
Percussion Ensemble
Recording and Sound II (CDEHS)
Vocal Technique

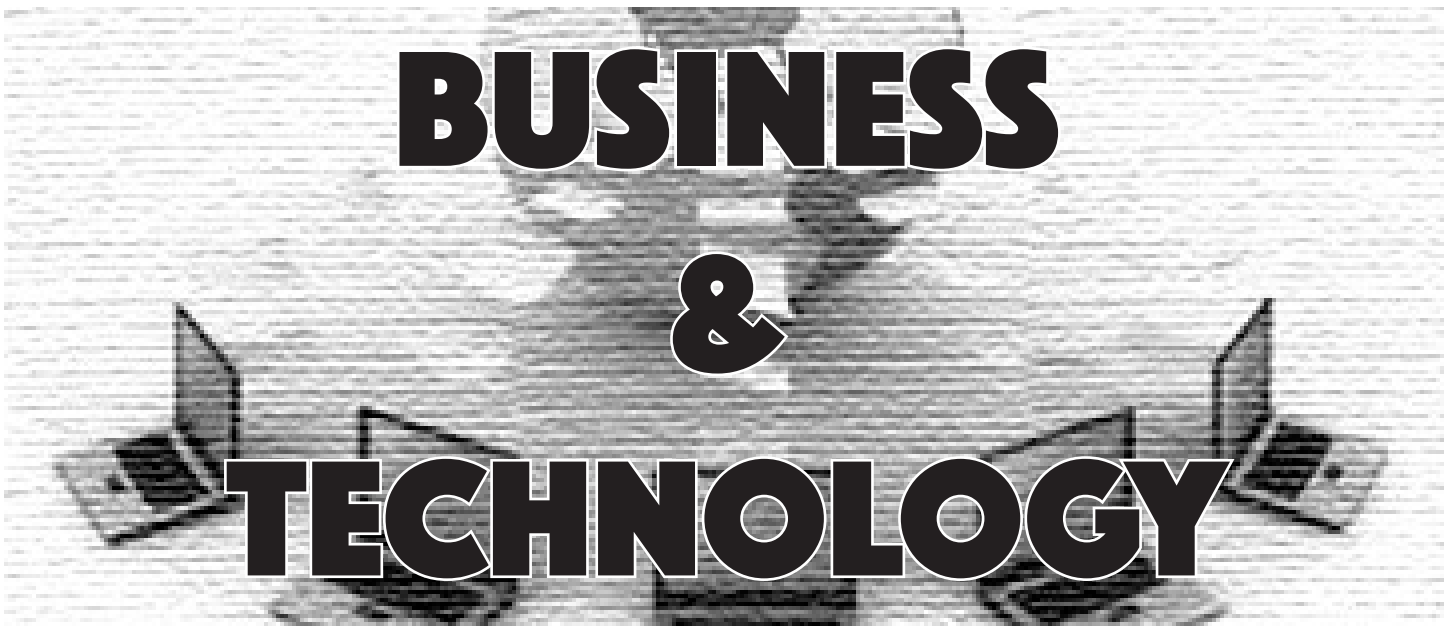
Career Experience Courses

(Seniors Only)
Cooperative Education Internship
Cooperative Education Work
Experience

Related Clubs and Activities

African American Heritage/
History Club
Anime Club
Art Club
Fall Play
FBLA
Four Diamonds
French Club
GEM/Women's Empowerment
Club
German Club
Key Club
Latin Club
Mock Trial
National Honor Society
Off the Hook – Knitting Club
Panther Print Shop
Poetry Out Loud/Poetry Slam
Rampage/Roaring Panther
SAGA/GSA
Spanish Club
Spring Musical
Student Council
Study Abroad Club
Technology Education Club
Yearbook
Youth and Government

* Clubs may vary by high school
depending on student interest



This Pathway is designed to prepare students for careers in the world of business, finance, and information systems.

CAREER PATHWAY - BUSINESS & TECHNOLOGY

Are you interested in or do you enjoy...	Can you...
<ul style="list-style-type: none"> • a business environment • office management • sales • computers and technology • running your own business • learning new software programs • advertising • marketing research • insurance/banking/finance • accounting/record keeping/bookkeeping • using numbers to develop proposals • forecasting market demands 	<ul style="list-style-type: none"> • use computers and other technology • work with the public • work easily with others or independently • design and give presentations • persuade others • work with statistics • show initiative • pay attention to detail

CAREER PATHWAY - BUSINESS & TECHNOLOGY

FOCUS AREA	ENTRY	TECHNICAL/SKILLED	PROFESSIONAL
Computer Information Systems	Data Entry Clerk Computer Operator	Data Processing Technician Computer Support Specialist CAD/CAM Technician Technical Support Technician Internet Specialist Telecommunications Equipment Installer/Repairer	Computer Systems Analyst Computer & Information Systems Manager Network & Computer Systems Administrator Computer Software Engineer Network & Data Communication Analyst Computer Programmer Computer & Information Scientist
Administration, Marketing, & Sales	Receptionist Retail Sales Associate Office Clerk Billing & Posting Clerk Bookkeeper Insurance Claim Clerk	Executive Secretary Merchandising Displayer Administrative Assistant Medical Transcriptionist Bill & Account Collector Restaurant Manager Real Estate Agent Customer Service Representative	Business Administration Wholesale/Retail Buyer Human Resource Manager Medical Records & Health Information Systems Specialist Insurance Sales Agent Hotel Management Real Estate Appraiser Chief Executive Officer
Finance & Math	Accounting Clerk Auditing Clerk Bank Teller Bookkeeping Clerk Bank Teller Bill Collector Statistical Clerk Cashier	Brokerage Clerk Credit Manager Bank Marketing Manager Purchasing Agent Credit Manager Customer Service Representative	Financial Manager/Broker Accountant/Auditor Loan Officer Cost Estimator Personal Financial Advisor Purchasing Agent Statistician/Actuary Business Manager

CORE SUBJECTS

	ENTRY	TECHNICAL/SKILLED	PROFESSIONAL
GRADE 9	Freshman English Pre-Algebra or CP Algebra 1 Science US History II or World Cultures Physical Education Introduction to Web Design	Freshman English or CP Freshman English CP Algebra 1 or CP Geometry Science or Honors Biology US History II, World Cultures, AP United States History, or AP World History Physical Education World Language ** Introduction to Web Design	Freshman CP English or Freshman Honors English CP Algebra, CP Geometry, CP Algebra II, or Honors Algebra II Science or Honors Biology US History II, World Cultures, AP United States History, or AP World History Physical Education World Language** Introduction to Web Design
GRADE 10	Sophomore English CP Algebra I, CP Geometry, or CP Algebra II Biology American Government and Citizenship Physical Education Health	Sophomore English or Sophomore CP English CP Algebra I, CP Geometry, or CP Algebra II, Pre-calculus with Trigonometry A Biology American Government and Citizenship, or AP US Government and Politics Physical Education Health World Language**	Sophomore CP English or Sophomore Honors English CP Geometry, CP Algebra II, Honors Algebra II, Pre-Calculus with Trigonometry A, or Honors Pre-calculus with Trigonometry Biology, Honors Biology, Chemistry, or Honors Chemistry American Government and Citizenship, or AP US Government and Politics Physical Education Health World Language**
GRADE 11	Junior English CP Geometry, or CP Algebra II Earth Systems Science or Human Influence on the Environment US History II or World Cultures Physical Education Financial Literacy	Junior English or Junior CP English CP Geometry, CP Algebra II, Pre-Calculus with Trigonometry A or B, Honors Pre-Calculus with Trigonometry Earth Systems Science, Human Influence on the Environment, Chemistry, or Physics US History II, World Cultures, AP United States History, or AP World History Physical Education Financial Literacy World Language**	Junior CP English or Junior Honors English CP Algebra II, Pre-Calculus with Trigonometry A or B, Honors Pre-Calculus with Trigonometry, Calculus I, or AP Calculus AB Chemistry, Honors Chemistry, Biology II, Anatomy and Physiology, Physics, AP Biology, AP Physics, AP Environmental Science, or AP Chemistry US History II, World Cultures, AP United States History, or AP World History Physical Education Financial Literacy World Language**
GRADE 12	Senior English CP Algebra II, Consumer Math or Accounting Physical Education	Senior CP English or 20th Century Literature Advanced Math Topics, Probability and Statistics, Accounting, Economics, AP Economics, Pre-Calculus with Trigonometry A or B, AP Statistics, Calculus I, AP Calculus AB, or AP Calculus BC Physical Education	Senior CP English, 20th Century Literature, or AP English Advanced Math Topics, Probability and Statistics, Economics, AP Economics, Pre-Calculus with Trigonometry A or B, AP Statistics, Calculus I, AP Calculus AB, or AP Calculus BC Physical Education

**** World Language Recommendations:**

Entry - Optional (May choose language as an elective.)

Technical/Skilled - two or more consecutive years of same language (three or four years preferred).

Professional - two or more consecutive years of same language (three or four years preferred)

NOTE: Admission requirements to many 4-year colleges include a minimum of two years of the same World Language.

BUSINESS & TECHNOLOGY

English

Journalism I
Journalism II
Public Speaking

Social Studies

AP Economics
AP Psychology
Economics
Psychology

Math

AP Statistics
Consumer Math
Probability and Statistics

Technology

Architectural Design
Digital Graphics
Drones and Flight
Exploring Technology Education
Game Design & 3D Animation
Promotional Graphics
Robotics & 3D Modeling
Technical Design

Business

Accounting I
Accounting II
Advanced Computer Concepts
AP Computer Science
Business Computer Applications
Business Law
Compuverse
Personal Finance & Investing
Programming & Web Page Design
Sports & Entertainment Marketing

Family & Consumer Science

Life Management Skills

Music

Intro to Recording & Sound
Recording & Sound II

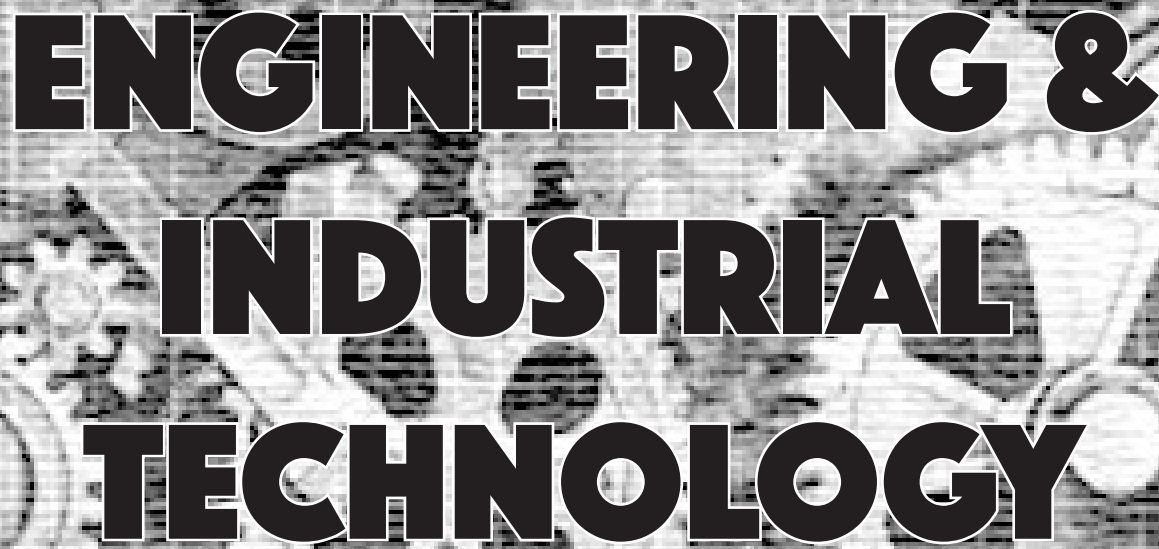
Career Experience Courses (Seniors Only)

Cooperative Education Internship
Cooperative Education Work
Experience

Related Clubs and Activities

African American Heritage/
History Club
DECA Club
CD Finance Club
Four Diamonds
French Club
Future Business Leaders of
America (FBLA)
GEM/Women's Empowerment
Club
German Club
Key Club
Latin Club
National Honor Society
Panther Print Shop
SAGA/GSA
School Store
Spanish Club
Student Council
Study Abroad Club (CDEHS)
Technology Education Club
Yearbook

* Clubs may vary by high school
depending on student interest



ENGINEERING & INDUSTRIAL TECHNOLOGY

This Pathway is designed to cultivate students' interests, awareness and application to areas related to technologies necessary to design, develop, install or maintain physical systems.

CAREER PATHWAY - ENGINEERING & INDUSTRIAL TECHNOLOGY

Are you interested in or do you enjoy...	Can you...
<ul style="list-style-type: none">• math and science• building and construction• woodworking• precision work• designing, installing, and repairing• electrical, mechanical, and HVAC systems• tools and equipment• design and architecture• computers and technology• building and making a variety of products• the way things work• operating machinery/tools• creating products using your hands• engineering	<ul style="list-style-type: none">• follow verbal and written directions• work with your hands in a variety of environments• apply mathematical and scientific principles to models• use problem solving skills• visualize a product from beginning to end• analyze data• cooperate with others• use computers and other technologies• organize reports and people• think abstractly

CAREER PATHWAY - ENGINEERING & INDUSTRIAL TECHNOLOGY

FOCUS AREA	ENTRY	TECHNICAL/SKILLED	PROFESSIONAL
Engineering	Miner	Surveyor Technician Robotics Technician Fiber Optics Technician City Planning Aide Drafter - Civil, Mechanical, Electrical, Electronic, Architectural	Surveyor Engineer - Aerospace, Architectural, Chemical, Civil, Computer, Electrical, Environmental, Materials, Mechanical, Mining, Nuclear, Petroleum
Manufacturing & Industrial	Machine Operator Machinery Maintenance Worker Inspector, Tester, Sorter, Sampler & Weigher Packaging & Filling Machine Operator/Tender Locksmith Assembler/ Fabricator Printing Machine Operator Industrial Machine Mechanic	Machine Tool Technician Tool & Die Maker Welder/Welder Technician Electronic Technician Power Plant Operator Machinist Mechanical Drafter Sheet Metal Worker Boilermaker Industrial Engineering Technician	Mechanical Engineer Industrial Engineer Purchasing Agent Manufacturer's Rep Civil Engineer Safety Engineer I Industrial Production Manager
Architecture & Construction	Construction Laborer Painter Highway Maintenance Worker Carpenter's Apprentice Cabinetmaker's Helper Roofer Carpet Installer	Construction & Building Inspector CAD/CAM Design Technician Architectural & Civil Drafter Heating, AC, Refrigeration Mechanic & Installer Plumber Brick Mason/ Stone Mason Carpenter/Cabinetmaker Welder Electrician Construction Manager Cement Mason Concrete Finisher	Construction Manager Architect/Architectural Designer Builder/Developer Cost Estimator Landscape Architect
Distribution & Transportation	Taxi Driver Bicycle Repairer Bus Driver Light Truck Driver Cargo & Freight Agent Courier & Messenger Postal Mail Carrier Flight Attendant	Automotive Technician Auto Body Technician Bus/Truck Mechanic Diesel Engine Specialist Avionics/Electronic Technician Operating Engineer Aircraft Mechanic & Service Technician	Transportation Engineer Postmaster Airline Pilot Air-Traffic Controller

CORE SUBJECTS

	ENTRY	TECHNICAL/SKILLED	PROFESSIONAL
GRADE 9	Freshman English Pre-Algebra or CP Algebra 1 Science US History II or World Cultures Physical Education Introduction to Web Design	Freshman English or CP Freshman English CP Algebra 1 or CP Geometry Science or Honors Biology US History II, World Cultures, AP United States History, or AP World History Physical Education World Language ** Introduction to Web Design	Freshman CP English or Freshman Honors English CP Algebra, CP Geometry, CP Algebra II, or Honors Algebra II Science or Honors Biology US History II, World Cultures, AP United States History, or AP World History Physical Education World Language** Introduction to Web Design
GRADE 10	Sophomore English CP Algebra I, CP Geometry, or CP Algebra II Biology American Government and Citizenship Physical Education Health	Sophomore English or Sophomore CP English CP Algebra I, CP Geometry, or CP Algebra II, Pre-calculus with Trigonometry A Biology American Government and Citizenship, or AP US Government and Politics Physical Education Health World Language**	Sophomore CP English or Sophomore Honors English CP Geometry, CP Algebra II, Honors Algebra II, Pre-Calculus with Trigonometry A, or Honors Pre-calculus with Trigonometry Biology, Honors Biology, Chemistry, or Honors Chemistry American Government and Citizenship, or AP US Government and Politics Physical Education Health World Language**
GRADE 11	Junior English CP Geometry, or CP Algebra II Earth Systems Science or Human Influence on the Environment US History II or World Cultures Physical Education Financial Literacy	Junior English or Junior CP English CP Geometry, CP Algebra II, Pre-Calculus with Trigonometry A or B, Honors Pre-Calculus with Trigonometry Earth Systems Science, Human Influence on the Environment, Chemistry, or Physics US History II, World Cultures, AP United States History, or AP World History Physical Education Financial Literacy World Language**	Junior CP English or Junior Honors English CP Algebra II, Pre-Calculus with Trigonometry A or B, Honors Pre-Calculus with Trigonometry, Calculus I, or AP Calculus AB Chemistry, Honors Chemistry, Biology II, Anatomy and Physiology, Physics, AP Biology, AP Physics, AP Environmental Science, or AP Chemistry US History II, World Cultures, AP United States History, or AP World History Physical Education Financial Literacy World Language**
GRADE 12	Senior English CP Algebra II, Consumer Math or Accounting Physical Education	Senior CP English or 20th Century Literature Advanced Math Topics, Probability and Statistics, Accounting, Economics, AP Economics, Pre-Calculus with Trigonometry A or B, AP Statistics, Calculus I, AP Calculus AB, or AP Calculus BC Physical Education	Senior CP English, 20th Century Literature, or AP English Advanced Math Topics, Probability and Statistics, Economics, AP Economics, Pre-Calculus with Trigonometry A or B, AP Statistics, Calculus I, AP Calculus AB, or AP Calculus BC Physical Education

** World Language Recommendations:

Entry - Optional (May choose language as an elective.)

Technical/Skilled - two or more consecutive years of same language (three or four years preferred).

Professional - two or more consecutive years of same language (three or four years preferred)

NOTE: Admission requirements to many 4-year colleges include a minimum of two years of the same World Language.

ENGINEERING & INDUSTRIAL TECHNOLOGY

English

Public Speaking
Social Studies
AP Economics
Economics

Science

AP Chemistry
AP Physics
Chemistry
Honors Chemistry
Organic Chemistry
Physics

Math

AP Calculus AB
AP Calculus BC
AP Statistics
Calculus I
Probability and Statistics

Technology

Architectural Design
Drones and Flight
Exploring Technology Education
Engineering I: Exploring
Technology
Engineering II: Engineering
and Design
Engineering III: Advanced Topics
Robotics and 3D Modeling
Technical Design

Business

Advanced Computer Concepts
AP Computer Science
Business Computer Applications
Programming and Web Page
Design

Art

Drawing and Painting I
Drawing and Painting II
Drawing and Painting III
Explorations in Art
Three Dimensional Art I
Three Dimensional Art II
Three Dimensional Art III

Family Consumer Science

Life Management Skills

Music

Intro to Music Technology
Intro to Recording and Sound I
Recording and Sound II (CDEHS)

Career Experience Courses (Seniors Only)

Cooperative Education Internship
Cooperative Education Work
Experience

Related Clubs and Activities

African American Heritage/
History Club
Art Club
Chess Club
French Club
GEM/Women's Empowerment
Club
German Club
Latin Club
Math Club
National Honor Society
Off the Hook – Knitting Club
Panther Print Shop
PC Builders Club
SAGA/GSA
Science Olympiad
Spanish Club
Student Council
Technology Education Club
Yearbook

* Clubs may vary by high school
depending on student interest



This Pathway is designed to cultivate students' interests, skills and experiences for employment in careers related to family and human needs.

CAREER PATHWAY - HUMAN SERVICES

Are you interested in or do you enjoy...	Can you...
<ul style="list-style-type: none"> • family and social services • teaching/counseling • child development • aging adults • sports • cleaning • law and law enforcement • firefighting • government work and agencies • public work • social work • serving others needs • helping and protecting others • analyzing human behavior • hair design/nail design • enhancing personal appearance • nutrition/food preparation 	<ul style="list-style-type: none"> • be conscientious, dependable and punctual • use computers and technology • assume leadership roles • relate to diverse populations easily • organize well • work independently • communicate well • remain fair and just in a variety of situations • think logically and solve problems • work on a team • think calmly and critically in an emergency situation • work with others • be creative

CAREER PATHWAY - HUMAN SERVICES

FOCUS AREA	ENTRY	TECHNICAL/SKILLED	PROFESSIONAL
Education, Law, & Government	Teacher Assistant/Aide Legal Secretary Mail Carrier Armed Service Enlistment Crossing Guard Jail Officer/Security Guard/BodyGuard Court Clerk Private Investigator/Baliff Firefighter	Paralegal & Legal Assistant Corrections Officer Parole Officer Police Identification/ Records Officer Court Reporter Fire Investigator	Teacher (Elementary, Secondary, Vocational, Special Education, etc.) Lawyer/Judge Professor Postmaster Politician Diplomat Arbitrator/Mediator FBI Agent/Criminal Investigator Magistrate/Court Administrator Homeland Security/ Emergency Management Specialist
Social Services & Human Development	Childcare Aid Library Assistant Personal/Home Care Aide Personal/Beauty Aide Flight Attendant Nanny Refuse & Recycle Worker	Child Development Associate Library Technician Residential Advisor Social Services Tech. Mortician/Embalmer Massage Therapist Cosmetologist/Barber Manicurist Butcher/Meat Cutter Materials Management	Childcare Center Director Administrator Librarian Mental Health Counselor Sociologist Funeral Director Clergy Cosmetology Instructor Arbitrator Mediator Conciliator Materials Resource Management
Hospitality and Tourism	Travel/Tour Guide Short Order Cook Baker Baggage Porter Bellhop Housekeeping Worker Retail Sales Clerk Waiter/Waitress	Travel Agent Chef Hotel/Motel Clerk Housekeeping Supervisor Bartender	Meetings/Convention Planner Chef/Food Services Manager Hotel/Motel Manager Restaurant Manager Curator Professional Athlete

CORE SUBJECTS

	ENTRY	TECHNICAL/SKILLED	PROFESSIONAL
GRADE 9	Freshman English Pre-Algebra or CP Algebra 1 Science US History II or World Cultures Physical Education Introduction to Web Design	Freshman English or CP Freshman English CP Algebra 1 or CP Geometry Science or Honors Biology US History II, World Cultures, AP United States History, or AP World History Physical Education World Language ** Introduction to Web Design	Freshman CP English or Freshman Honors English CP Algebra, CP Geometry, CP Algebra II, or Honors Algebra II Science or Honors Biology US History II, World Cultures, AP United States History, or AP World History Physical Education World Language** Introduction to Web Design
GRADE 10	Sophomore English CP Algebra I, CP Geometry, or CP Algebra II Biology American Government and Citizenship Physical Education Health	Sophomore English or Sophomore CP English CP Algebra I, CP Geometry, or CP Algebra II, Pre-calculus with Trigonometry A Biology American Government and Citizenship, or AP US Government and Politics Physical Education Health World Language**	Sophomore CP English or Sophomore Honors English CP Geometry, CP Algebra II, Honors Algebra II, Pre-Calculus with Trigonometry A, or Honors Pre-calculus with Trigonometry Biology, Honors Biology, Chemistry, or Honors Chemistry American Government and Citizenship, or AP US Government and Politics Physical Education Health World Language**
GRADE 11	Junior English CP Geometry, or CP Algebra II Earth Systems Science or Human Influence on the Environment US History II or World Cultures Physical Education Financial Literacy	Junior English or Junior CP English CP Geometry, CP Algebra II, Pre-Calculus with Trigonometry A or B, Honors Pre-Calculus with Trigonometry Earth Systems Science, Human Influence on the Environment, Chemistry, or Physics US History II, World Cultures, AP United States History, or AP World History Physical Education Financial Literacy World Language**	Junior CP English or Junior Honors English CP Algebra II, Pre-Calculus with Trigonometry A or B, Honors Pre-Calculus with Trigonometry, Calculus I, or AP Calculus AB Chemistry, Honors Chemistry, Biology II, Anatomy and Physiology, Physics, AP Biology, AP Physics, AP Environmental Science, or AP Chemistry US History II, World Cultures, AP United States History, or AP World History Physical Education Financial Literacy World Language**
GRADE 12	Senior English CP Algebra II, Consumer Math or Accounting Physical Education	Senior CP English or 20th Century Literature Advanced Math Topics, Probability and Statistics, Accounting, Economics, AP Economics, Pre-Calculus with Trigonometry A or B, AP Statistics, Calculus I, AP Calculus AB, or AP Calculus BC Physical Education	Senior CP English, 20th Century Literature, or AP English Advanced Math Topics, Probability and Statistics, Economics, AP Economics, Pre-Calculus with Trigonometry A or B, AP Statistics, Calculus I, AP Calculus AB, or AP Calculus BC Physical Education

** World Language Recommendations:

Entry - Optional (May choose language as an elective.)

Technical/Skilled - two or more consecutive years of same language (three or four years preferred).

Professional - two or more consecutive years of same language (three or four years preferred)

NOTE: Admission requirements to many 4-year colleges include a minimum of two years of the same World Language.

HUMAN SERVICES

English

Dramatic Arts
Dramatic Arts II
Public Speaking

Social Studies

AP Economics
AP European History
AP Human Geography
AP Psychology
Economics
History of Western Civilization
Multicultural History/Sociology
Psychology

Science

AP Chemistry
AP Environmental Science
Chemistry
Honors Chemistry
Human Influence on the Environment

Math

AP Statistics
Consumer Math
Probability and Statistics

Technology

Digital Graphics
Promotional Graphics

Business

Advanced Computer Concepts
Business Computer Applications
Business Law
Sports & Entertainment Marketing

Family & Consumer Science

Child Development & Parenting
Family Dynamics
Foods & Nutrition
Into to Family & Consumer Science (CDHS)
Life Management Skills

Music

AP Music Theory
Band
Choir
Guitar I
Guitar II
Intro to Music Technology
Intro to Recording & Sound
Marching Band
Music Keyboarding I
Music Keyboarding II
Music Theory
Orchestra
Percussion Ensemble
Recording & Sound II
Vocal Technique

Physical Education

HACC Fire Training and Emergency Medical Responders Programs
Red Cross Certified First Aid/CPR
Basic Life Support

Career Experience Courses (Seniors Only)

Cooperative Education Internship
Cooperative Education Work Experience

Related Clubs and Activities

African American Heritage/History Club
Bowling Club
DECA Club
Criminal Justice Club
Fellowship of Christian Athletes
Four Diamonds
French Club
Future Business Leaders of America (FBLA)
GEM/Women's Empowerment Club
German Club
Key Club
Latin Club
Mock Trial
Model United Nations
National Honor Society
Panther Print Shop
Quiz Bowl
Rams Helping Hands
SAGA/GSA
School Store
Ski Club
Spanish Club
Student Council
Students Helping Students
Study Abroad Club
Technology Education Club
Tri-M
Yearbook

* Clubs may vary by high school depending on student interest



This Pathway is designed to cultivate students' interests in the life, physical and behavioral sciences, in addition to the planning, managing and providing of therapeutic services, diagnostic services, health information and biochemistry research development.

Are you interested in or do you enjoy...	Can you...
<ul style="list-style-type: none"> • caring for animals • science of medicine • medical research, medical technology • wildlife, animals, parks, and forestry • environment and conservation • agricultural related business and management • conducting experiments with plants & animals • pharmacy, dentistry, physical therapy or radiology • studying and analyzing patterns in nature • science & math • applying gov't. regulations to real-world situations • greenhouse crops and food production • plant nursery operation and management • floristry and floral design, landscape horticulture • learning about concrete facts & theoretical conclusions • preparing chemicals for an experiment or observation • work with scientific method of observation & application 	<ul style="list-style-type: none"> • use a calculator and computers • work outdoors around animals and plants • work with others • collect and analyze data from field experiments • use laboratory equipment • work with scientific and mathematical theories • work with people in need • work with a variety of science fields • apply scientific principles to real-world situations • perform physical labor • tolerate varying weather conditions • create floral, landscape designs • work with numbers and/or create a data base

CAREER PATHWAY - SCIENCE & HEALTH

FOCUS AREA	ENTRY	TECHNICAL/SKILLED	PROFESSIONAL
Health Science	Dental Assistant Medical Assistant Home Health Aide Pharmacy Aide	Dental Hygienist Medical Laboratory Technician Nursing (LPN) Pharmacy Technician Radiology Technician Physical Therapy Aide Occupational Therapy Aide EMT/Paramedic Cardiovascular Technician Dietetic Technician	Dentist Physician/Physician Asst. Nurse Practitioner Pharmacist Radiologist Physical Therapist Occupational Therapist Psychologist Cardiologist Dietitian Surgeon
Natural Resources & Agriculture	Lawn Maintenance Worker Veterinary Assistant Animal Trainer Agricultural Sprayer Forest/Conservation Worker	Turfgrass Management Technician Veterinary Technician Animal Breeder Agricultural Inspector/Tech. Forest/Conservation Technician Agriculture & Food Science Technician Fish Hatchery Manager	Landscape Architecture Veterinarian Animal Scientist Agri-Science Engineer Conservationist/Forester Food Scientist Fish and Game Warden
Other Science	Weigher, Measurer, Checker, Sampler	Chemical Technician Biological Technician Environmental Technician Nuclear Monitoring Technician	Chemist Biologist Environmentalist Nuclear Scientist Archeologist Anthropologist Forensic Scientist Meteorologist Geologist Physicist

CORE SUBJECTS

	ENTRY	TECHNICAL/SKILLED	PROFESSIONAL
GRADE 9	Freshman English Pre-Algebra or CP Algebra 1 Science US History II or World Cultures Physical Education Introduction to Web Design	Freshman English or CP Freshman English CP Algebra 1 or CP Geometry Science or Honors Biology US History II, World Cultures, AP United States History, or AP World History Physical Education World Language ** Introduction to Web Design	Freshman CP English or Freshman Honors English CP Algebra, CP Geometry, CP Algebra II, or Honors Algebra II Science or Honors Biology US History II, World Cultures, AP United States History, or AP World History Physical Education World Language** Introduction to Web Design
GRADE 10	Sophomore English CP Algebra I, CP Geometry, or CP Algebra II Biology American Government and Citizenship Physical Education Health	Sophomore English or Sophomore CP English CP Algebra I, CP Geometry, or CP Algebra II, Pre-calculus with Trigonometry A Biology American Government and Citizenship, or AP US Government and Politics Physical Education Health World Language**	Sophomore CP English or Sophomore Honors English CP Geometry, CP Algebra II, Honors Algebra II, Pre-Calculus with Trigonometry A, or Honors Pre-calculus with Trigonometry Biology, Honors Biology, Chemistry, or Honors Chemistry American Government and Citizenship, or AP US Government and Politics Physical Education Health World Language**
GRADE 11	Junior English CP Geometry, or CP Algebra II Earth Systems Science or Human Influence on the Environment US History II or World Cultures Physical Education Financial Literacy	Junior English or Junior CP English CP Geometry, CP Algebra II, Pre-Calculus with Trigonometry A or B, Honors Pre-Calculus with Trigonometry Earth Systems Science, Human Influence on the Environment, Chemistry, or Physics US History II, World Cultures, AP United States History, or AP World History Physical Education Financial Literacy World Language**	Junior CP English or Junior Honors English CP Algebra II, Pre-Calculus with Trigonometry A or B, Honors Pre-Calculus with Trigonometry, Calculus I, or AP Calculus AB Chemistry, Honors Chemistry, Biology II, Anatomy and Physiology, Physics, AP Biology, AP Physics, AP Environmental Science, or AP Chemistry US History II, World Cultures, AP United States History, or AP World History Physical Education Financial Literacy World Language**
GRADE 12	Senior English CP Algebra II, Consumer Math or Accounting Physical Education	Senior CP English or 20th Century Literature Advanced Math Topics, Probability and Statistics, Accounting, Economics, AP Economics, Pre-Calculus with Trigonometry A or B, AP Statistics, Calculus I, AP Calculus AB, or AP Calculus BC Physical Education	Senior CP English, 20th Century Literature, or AP English Advanced Math Topics, Probability and Statistics, Economics, AP Economics, Pre-Calculus with Trigonometry A or B, AP Statistics, Calculus I, AP Calculus AB, or AP Calculus BC Physical Education

** World Language Recommendations:

Entry - Optional (May choose language as an elective.)

Technical/Skilled - two or more consecutive years of same language (three or four years preferred).

Professional - two or more consecutive years of same language (three or four years preferred)

NOTE: Admission requirements to many 4-year colleges include a minimum of two years of the same World Language.

SCIENCE & HEALTH

English

Public Speaking

Social Studies

AP Economics

AP Human Geography

AP Psychology

Economics

History of Western Civilization

Multicultural History/Sociology

Psychology

Science

Anatomy/Physiology

AP Biology

AP Chemistry

AP Environmental Science

AP Physics

Biology II

Chemistry

Earth Systems Science

Environmental Science

Honors Chemistry

Human Influence on the
Environment

Organic Chemistry

Physics

Math

Advanced Math Topics

AP Calculus AB

AP Calculus BC

AP Statistics

Calculus I

Honors Precalculus

Precalculus A

Precalculus B

Probability and Statistics

Technology

Design and Engineering II

Design and Engineering III:

Advanced Topics

Drones and Flight

Exploring Technology Education

Engineering I: Exploring

Technology

Robotics and 3D Modeling

Technical Design (CADD)

Business

Advanced Computer Concepts

Business Computer Applications

Business Law

Programming and Web Page
Design

Art

Explorations in Art

Family Consumer Science

Foods and Nutrition

Intro to Family Consumer Science
(CDHS)

Life Management Skills

Music

Intro to Music Technology

Physical Education

HACC Fire Training and Emergency

Medical Responders Programs

Red Cross Certified First Aid/CPR

Basic Life Support

Career Experience Courses (Seniors Only)

Cooperative Education Internship

Cooperative Education Work
Experience

Related Clubs and Activities

African American Heritage/History
Club

Chess Club

Criminal Justice Club

Environmental Club/Friends of the
Swamp

French Club

Future Medical Professionals of
America

GEM/Women's Empowerment
Club

German Club

Latin Club

Math Club

National Honor Society

PC Builders Club

SAGA/GSA

Science Olympiad

Sci-Fi Club

Spanish Club

Student Council

Technology Education Club

* Clubs may vary by high school
depending on student interest



CAREER ENHANCEMENT OPPORTUNITIES

**CENTRAL DAUPHIN
SCHOOL DISTRICT**

ACADEMICS

ADVANCED PLACEMENT COURSES

These qualifying courses are college level courses. Students must meet all the prerequisite requirements for each individual course in order to be considered for the course. Upon completion of the course in May, students may take the advanced placement exam. The cost of the exam is the responsibility of the student. Fee waivers may be available for qualified students.

BUSINESS EDUCATION

Our high schools are licensed to provide practice and certification to the computer students in various Microsoft programs. This is comparable to college-level courses and students can become specialists in as many as seven different Microsoft programs before they leave high school.

COLLEGE IN THE HIGH SCHOOL

College-in-the-High School is an academically rigorous program for motivated students seeking an intellectual challenge within a supportive high school environment. These courses will be taught by CDSB teachers who have been approved and trained by the University of Pittsburgh and will offer CDSB students the opportunity to earn both high school and University of Pittsburgh credit in courses taught in the high school classroom.

DUAL ENROLLMENT

This program allows students to attend college either part-time or full-time possibly at a reduced cost while still in high school.

DAUPHIN COUNTY TECHNICAL SCHOOL

Dauphin County Technical School is a full-time, comprehensive, public career and technical high school serving Central Dauphin, Derry Township, Halifax Area, Harrisburg, Lower Dauphin, Middletown Area, and Susquehanna Township School Districts. Students typically apply in eighth grade, however, they may also apply in high school for full-time or half-day programs.

COOPERATIVE RELATED WORK EXPERIENCE

The cooperative related work experience program is available to senior students who wish to participate in career-related paid on-the-job-training experience on a daily basis. Students planning to enter the job market immediately following graduation can learn entry level skills through supervised job training. Students must obtain work site placements that will enable them to acquire meaningful workplace skills, and the placement must be pre-approved by the cooperative education coordinator. A maximum of three (3) elective credits can be earned through this program. To be considered for the cooperative related work experience program, students must complete an application packet in their junior year, be in good standing with academics, attendance, and discipline, and receive positive recommendations from their classroom teachers.

COOPERATIVE RELATED INTERNSHIP EXPERIENCE

The cooperative related internship experience program is available to senior students who wish to participate in career-related, paid or non-paid, training experience on a daily basis. College bound students intending to invest large sums of time and money into a specialized field of learning can gain practical experience to help insure that the investment is a wise one. Students must obtain an internship placement that will enable them to acquire meaningful career related experiences in an atmosphere conducive to learning, and the placement must be pre-approved by the cooperative education coordinator. A maximum of three (3) elective credits can be earned through this program. To be considered for the cooperative related internship experience program, students must complete an application packet in their junior year, be in good standing with academics, attendance, and discipline, and receive positive recommendations from their classroom teachers.

JOB SHADOWING

Students may coordinate and set up job shadowing experiences that are related to their career interests. It is recommended that students meet with their School Counselor for further details and instruction.

SUMMER ENRICHMENT ACTIVITIES

Students are encouraged to research and participate in summer programs that provide enrichment opportunities in specific career interest areas. These activities can provide invaluable personal and career learning experiences that can be used on college as well as employment applications. The Guidance Office maintains information and applications for programs.

CLUBS & ACTIVITIES

- Acapella Club (CDHS)
- African-American Heritage Club/African American Club
- Anime Club
- Art Club
- Bowling Club
- CD Finance Club
- CD Impact Club
- Chess Club
- Criminal Justice Club
- DECA
- Environmental Club/Envirothon/Friends of the Swamp
- Fall Play
- Fellowship of Christian Athletes
- Four Diamonds
- French Club
- Future Business Leaders of American (FBLA)
- Future Medical Professionals of American
- GEM Club/Women's Empowerment Club
- German Club
- Gay-Straight Alliance(GSA)/SAGA
- Indoor Track & Field Club
- Ice Hockey Club
- Key Club
- Latin Club
- Marching Band
- Mock Trial
- Model United Nations
- National Honor Society
- Pantara Quartet
- Panther Print Shop
- PC Builders Club
- Pit Orchestra
- Poetry Out Loud & Poetry Slam
- "Off the Hook" Knitting Club
- Quiz Bowl
- Rampage Club
- Rams Helping Hands/FCCLA
- Red Cross Club
- School Store
- Science Olympiad
- Sci-Fi
- Ski Club
- Spanish Club
- Spring Musical
- Student Council
- Students Helping Students
- Study Abroad Club
- Technology Education Club
- Tri-M
- The Roaring Panther
- Yearbook
- Youth & Government

*Clubs may vary by high school depending on student interest

MUSIC OPPORTUNITIES

CONCERT BAND ENSEMBLES

- Wind Ensemble (Auditioned)
- Symphonic Band
- Percussion Ensemble
- Ninth Grade Band
- Ninth Grade Band Percussion Ensemble
- DCMEA County Honor Band (Audition only)
- PMEA District Regional and All-State Band (Audition only)

CHOIRS

- Men's Chorale
- Women's Chorale
- Chanson/Select Women's Ensemble
- Singers/Choraliers
- DCMEA County Choir (Audition only)
- PMEA District Choir (Audition only)
- ACDA Choirs (Audition only)

ORCHESTRA ENSEMBLES

- Symphonic Orchestra
- Concert Orchestra
- Select Orchestra (Audition only CDEHS)
- County DCMEA Orchestra (Audition only)
- PMEA District Orchestra (Audition only)

JAZZ ENSEMBLES

- Jazz Orchestra (Audition only, grades 10-12, CDHS)
- 11 O'Clock Big Band (CDHS)
- 12 O'Clock Big Band (CDHS)
- Jazz Combo Ensemble (CDEHS)
- Solaris (Audition only – CDHS)

MARCHING ENSEMBLES

- Marching Band
- Color Guard

INDOOR ENSEMBLES

- Indoor Drumline (Auditioned)
- Indoor Standstill Drumline
- Indoor Gold Color Guard (Auditioned)
- Indoor Bronze Color Guard

CLASSROOM MUSIC

- Refer to course selection booklet for specific music course offerings.

ACAPELLA CLUB (CDHS)

MUSICAL

TRI-M RECITAL

Open to students enrolled in music classes

ATHLETICS

FALL

Cheerleading

- Cross Country
- Field Hockey
- Football
- Boys Soccer
- Girls Soccer
- Girls Tennis
- Girls Volleyball
- Golf

WINTER

- Cheerleading
- Boys Basketball
- Girls Basketball
- Swimming & Diving
- Wrestling

SPRING

- Baseball
- Boys Lacrosse
- Girls Lacrosse
- Boys Tennis
- Boys Volleyball
- Softball
- Track & Field



POST SECONDARY PREPARATION

**CENTRAL DAUPHIN
SCHOOL DISTRICT**

POST SECONDARY TESTING OPPORTUNITIES

	When?	Why?	For More Information	Cost*(Subject to change)
PSAT	10th and 11th Grade October	Practice for SAT Merit Scholarships (11th grade)	Guidance Office www.collegeboard.org	\$16.00
SAT	11th and 12th Grade	College Admission Exam	Guidance Office www.collegeboard.org	\$46.00 Reasoning Test \$26.00 Subject Test \$60.00 Reasoning with Essay *fee waivers may be available for those who qualify
ACT	11th and 12th Grade	College Admission Exam	Guidance Office www.act.org	\$46.00 + 16.50 for the writing option *fee waivers may be available for those who qualify
ASVAB	10th, 11th, and 12th Grade	Military: the ASVAB is the most widely used multiple aptitude test battery in the world, developed and maintained by the Department of Defense. Can be used as a career exploration tool.	Guidance Office Military Recruiter(s)	Free

POST SECONDARY OPPORTUNITIES

CAREER INFORMATION & EXPLORATION OPPORTUNITIES

	When?	Why? What?	For More Information	Cost* (Subject to Change)
Advanced Placement Courses	All grades	Some post-secondary institutions will give credit for certain AP classes if the student passes the AP exam with a minimum grade. The number of credits given for an acceptable AP exam grade varies between post-secondary institutions.	www.collegeboard.org Course Selection Booklet School Counselor	Fee for each AP exam
Dual Enrollment Program	12th grade	An opportunity to obtain college credits upon successful completion of the course requirements. Earn college credit possibly at a reduced cost.	School Counselor Guidance webpage	Possible reduced cost per credit
College in the High School	All grades	An opportunity to obtain college credits within the high school setting.	CHS Classroom Teacher	Possible reduced cost per credit
Naviance	All grades	Resource to explore college and career opportunities. High school uses Naviance to submit letters of recommendation and transcripts to colleges Scholarship List is maintained Summer opportunities	School website Guidance Office	None
College and Career Center	All grades	Career Cafes Assistance with Naviance SAT/ACT Study Guides College Application Support Job Board Summer programs information Scholarship Information College and Career research Computer Access	Guidance Office	None
Military Representatives	10th-12th	Lunch Visits Military brochures Military Websites	Guidance Office	None
Post – Secondary Admission Representatives		Lunch Visits College and Career Center Annual College Fair	Naviance Guidance Office	None



FINANCIAL AID INFORMATION

**CENTRAL DAUPHIN
SCHOOL DISTRICT**

FINANCIAL AID INFORMATION

NOTE: The following information is meant to be a guide only. It is highly recommended that students and parents attend the financial aid night held annually.

FASFA and SAR FORMS

The first step to obtaining financial aid is to file the FREE APPLICATION FOR FEDERAL STUDENT AID (FASFA). The government uses this form to determine your eligibility for aid, which includes grants, scholarships, work-study, and loans.

The FASFA can be found on the web at www.fafsa.ed.gov. You may call 1-800-4-FED-AID for an application or if you have questions about the FAFSA.

Complete the FAFSA as soon as possible after October 1 of each year. Submit the FAFSA even if you do not think you qualify for aid as some financial aid is not need based.

Once you submit your FAFSA, you will receive a Student Aid Report (SAR) from the U.S. Department of Education. The SAR summarizes the information you submitted on the FAFSA and presents the Expected Family Contribution (EFC), which tells you the amount your family is expected to contribute to education for the next academic year. When you submit your FAFSA, you will be able to specify the names and school codes of up to ten colleges. These colleges will automatically receive a copy of your SAR. Each school's Financial Aid Department will then put a Financial Aid Package together to determine how to meet the cost of attending their school.

Colleges offer merit-aid to talented students they want to attract. They also offer need based aid in the form of scholarships, grants, employment and low-interest loans to low income students with the least resources.

**Cost of Attendance (COA) minus Expected Family Contribution (EFC)
= Financial Need**

COA minus EFC minus Total Awarded Financial Aid = Unmet Need

FUNDING RESOURCES

Federal Government (Federal Department of Education)

- Grants (PELL, TEACH, etc.)
- Federal student loans (Direct, PLUS & GRAD PLUS student loans)
- See www.studentaid.ed.gov for more information.

State Government (PHEAA)

- Grants (PA state grant)
- Special state-aid programs (PATH, PA-Tip, etc.)
- See www.pheaa.org for more information.

Schools/Colleges

- Institutional grants
- Scholarships
- Work study
- See specific college/university websites for more information and/or contact financial aid office at college/university.

Private/Public/ Civic Organizations, etc.

- Scholarships – log in to Naviance/Family Connection for more information.
- Private student loans – see local banks or private lenders for more information.
- PLUS Loans: Available for parents of dependent students.



Central Dauphin School District
600 Rutherford Road
Harrisburg, PA 17109 • (717) 545-4703
FAX (717) 657-4999 • www.cdschools.org

Central Dauphin School District, an equal opportunity employer, will not discriminate in employment, educational programs, or activities based on race, color, religion, gender, sexual orientation, gender identity or expression, national origin, age, genetic information, disability, or veteran status. Additionally, we prohibit retaliation against individuals who oppose such discrimination and harassment or who participate in an equal opportunity investigation.

3-16-21